



St Clear Pound Lane

Smeeth, Ashford, TN25 6RJ

Offers In Excess Of £500,000

Stunning views across open countryside is just one feature of this charming detached bungalow.

The well appointed accommodation comprises an entrance hall, sitting room, with wood burning stove, open plan kitchen/dining room with vaulted ceiling, three bedrooms and bathroom/WC. To the rear is a generous, well stocked garden which also backs on to fields with the property benefitting from central heating, double glazing and driveway providing off road parking.

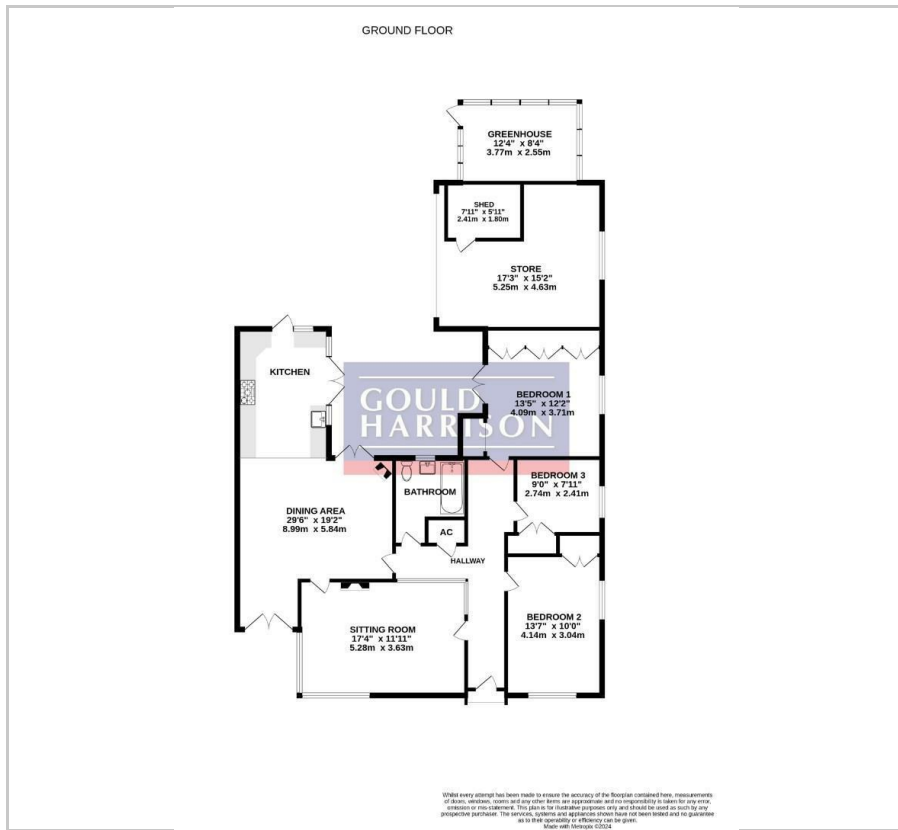
- ATTRACTIVE DETACHED BUNGALOW
- FAR REACHING VIEWS
- THREE BEDROOMS
- OPEN PLAN KITCHEN/DINING ROOM
- GENEROUS REAR GARDEN BACKING ONTO FIELDS
- DRIVEWAY FOR OFF ROAD PARKING
- POPULAR VILLAGE LOCATION

Viewing

Please contact our Ashford Office on 01233 646411 if you wish to arrange a viewing appointment for this property or require further information.



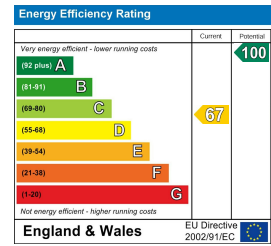
Floor Plan



Area Map



Energy Efficiency Graph



These particulars, whilst believed to be accurate are set out as a general outline only for guidance and do not constitute any part of an offer or contract. Intending purchasers should not rely on them as statements of representation of fact, but must satisfy themselves by inspection or otherwise as to their accuracy. No person in this firm's employment has the authority to make or give any representation or warranty in respect of the property.