



## 7 Beechwood Close

St. Marys Bay, Romney Marsh, TN29 0XF

Offers In Excess Of £250,000

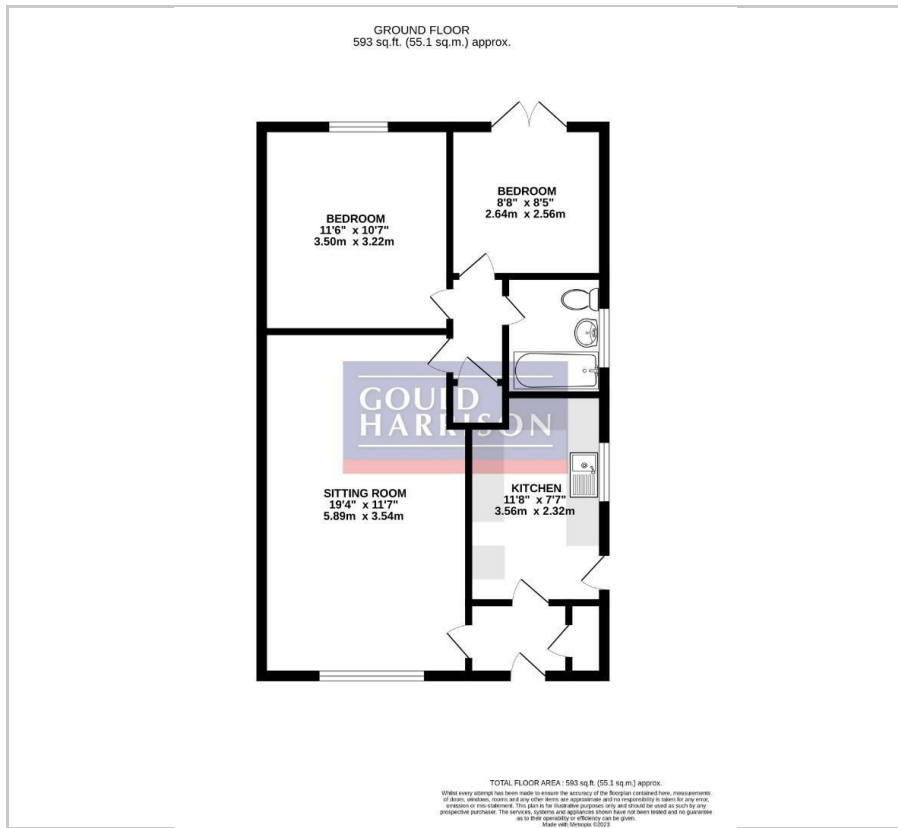
A very well presented semi detached bungalow in a peaceful cul de sac setting, available for sale with no onward chain. The property comprises an entrance hall, modern kitchen and bathroom, sitting room, two bedrooms and bathroom/WC. The rear garden is pleasantly enclosed with the property also benefitting from gas central heating, double glazing, garage and driveway.

- SEMI DETACHED BUNGALOW
- TWO BEDROOMS
- SITTING/DINING ROOM
- GARAGE & DRIVEWAY
- PLEASANTLY ENCLOSED REAR GARDEN
- VERY WELL PRESENTED
- NO ONWARD CHAIN
- GAS CENTRAL HEATING

### Viewing

Please contact our Ashford Office on 01233 646411 if you wish to arrange a viewing appointment for this property or require further information.

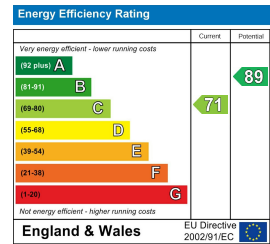
# Floor Plan



# Area Map



# Energy Efficiency Graph



These particulars, whilst believed to be accurate are set out as a general outline only for guidance and do not constitute any part of an offer or contract. Intending purchasers should not rely on them as statements of representation of fact, but must satisfy themselves by inspection or otherwise as to their accuracy. No person in this firm's employment has the authority to make or give any representation or warranty in respect of the property.