



15 Windsor Court Hoxton Close, Ashford, TN23 5LS

Price £160,000

One of the best positions on this retirement complex, this ground floor apartment has access straight into the terrace and delightful gardens.

The accommodation comprises hallway, open plan kitchen/living space, two bedrooms, four piece bathroom suite, new efficient electric radiators.

Windsor Court provides a welcoming residents lounge, guest suite and beautiful well maintained landscaped gardens.

Communal Entrance

With security intercom.

**Open Plan Kitchen/Living Room 15'5 x 14'2
(4.70m x 4.32m)**

Stainless steel sink unit, range of worktops with drawers and cupboards under, wall cupboards, dishwasher, four ring ceramic hob, low level oven.

Bedroom One 15'7 x 9'3 (4.75m x 2.82m)

Window to front.

Bedroom Two 15'1 x 7'3 (4.60m x 2.21m)

Window to front.

Bathroom 9'3 x 5'6 (2.82m x 1.68m)

Four piece suite comprising panelled bath, glass fronted shower cubicle, wash hand basin and low level WC.

Outside

Plentiful parking for residents and guests.

Tenure

Leasehold - Balance of 125 years from 2006.

Management Charge - £3,234.55 per annum.

Ground Rent - £395.00 per annum.

We are advised that covered in the service charge are water bills, gardening, cleaning of communal areas, windows and general maintenance.

All of the above should be confirmed by your legal representatives.

Services

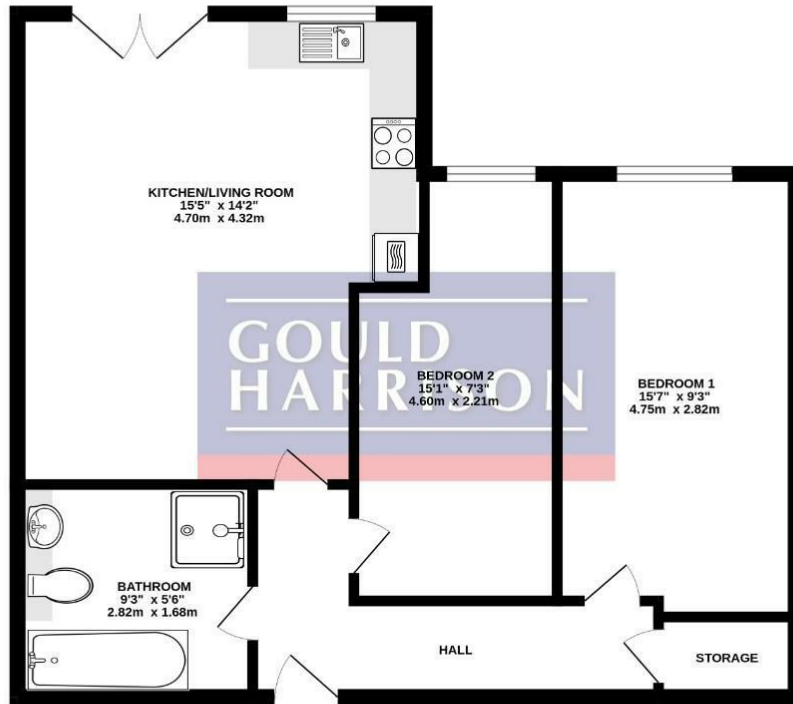
Mains water, electric and drainage are connected.

Council Tax

Ashford Borough Council Band: B.

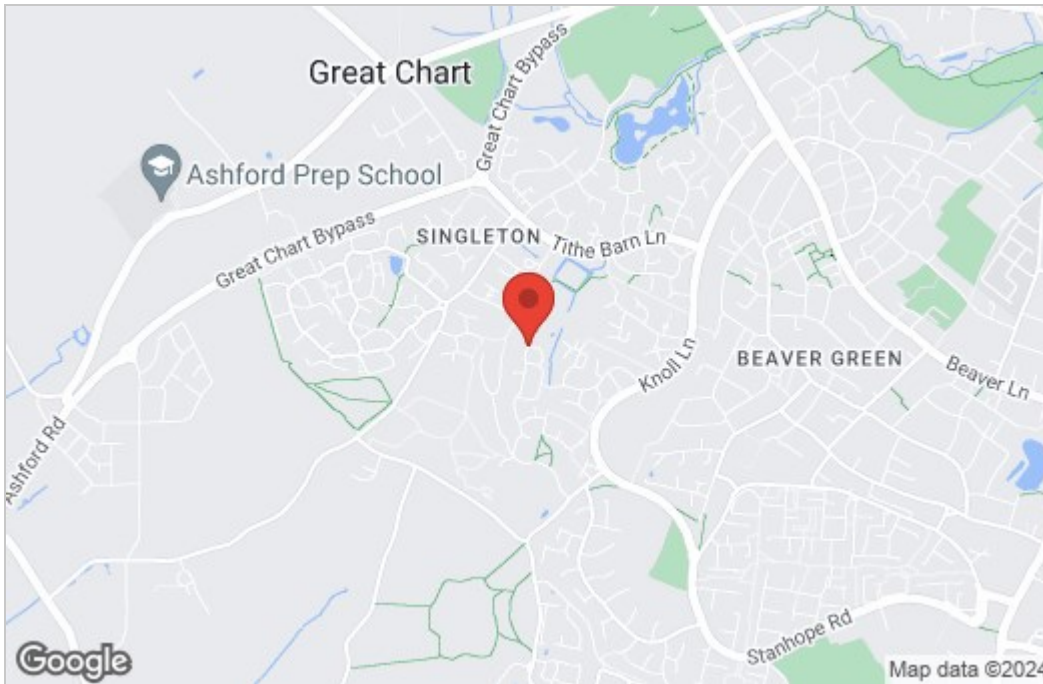
Floor Plan

GROUND FLOOR

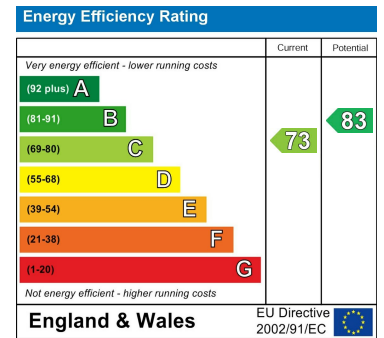


Whilst every attempt has been made to ensure the accuracy of the floorplan contained here, measurements of doors, windows, rooms and any other items are approximate and no responsibility is taken for any error, omission or mis-statement. This plan is for illustrative purposes only and should be used as such by any prospective purchaser. The services, systems and appliances shown have not been tested and no guarantee as to their operability or efficiency can be given.
Made with Metapix 62023

Area Map



Energy Efficiency Graph



These particulars, whilst believed to be accurate are set out as a general outline only for guidance and do not constitute any part of an offer or contract. Intending purchasers should not rely on them as statements of representation of fact, but must satisfy themselves by inspection or otherwise as to their accuracy. No person in this firm's employment has the authority to make or give any representation or warranty in respect of the property.