



OVER 60?

Secure this property
for up to **59% less!**

Price
£450,000

Freehold

3x  1x  1x 

**Ashdene Gardens,
Ashington, West Sussex,
RH20**

cubitt & west
Helping you move forwards



Main features

- Attractive and modern cottage style house in a cul de sac in the heart of the village
- Large lounge/dining room offering great family and entertaining space
- Three bedrooms plus downstairs study/playroom
- Garage and driveway
- Pretty rear garden

Accommodation

GROUND FLOOR

- Entrance Hall
- Kitchen: 10'9 x 7'2 (3.28m x 2.19m)
- Lounge/Dining Room: 22'2 x 13'0 (6.76m x 3.97m)
- Cloakroom
- Study: 7'6 x 6'9 (2.29m x 2.06m)

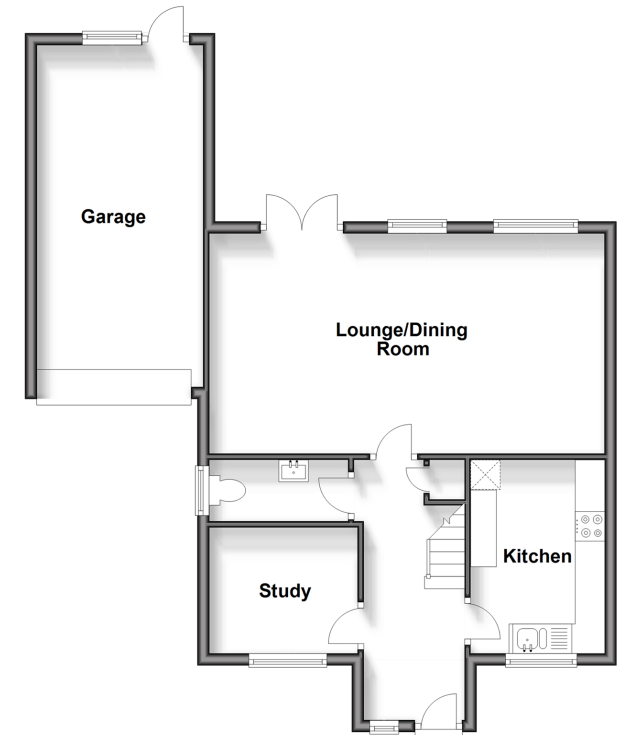
FIRST FLOOR

- Landing
- Family Bathroom
- Bedroom 1: 11'5 x 10'9 up to fitted wardrobes (3.48m x 3.28m)
- Bedroom 2: 11'5 x 7'5 up to fitted wardrobes (3.48m x 2.26m)
- Bedroom 3: 7'8 x 7'3 up to fitted wardrobes (2.34m x 2.21m)

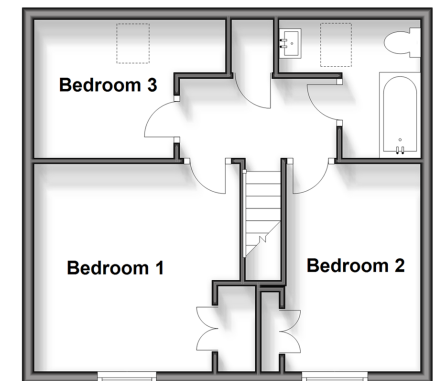
OUTSIDE

- Garage
- Driveway
- Front Garden
- Rear Garden

Ground Floor
Approx. 66.0 sq. metres (710.7 sq. feet)



First Floor
Approx. 39.0 sq. metres (419.6 sq. feet)



Call Ashington - 01903 891444 ■ cubittandwest.co.uk

- Legal advice should be taken to verify fixtures/fittings, planning, alterations and/or lease details
- Appliances & services are untested, dimensions are approximate and floor plans are not to scale
- Through a Homewise Home For Life Plan people aged 60+ can secure this property for up to 59% less, by purchasing a Lifetime Lease.



23603486/20240516/CR/HM1