



OVER 60?

Secure this property
for up to **59% less!**

Price

£425,000

Freehold

2x  2x  1x 

**Warminghurst Close,
Ashington, West Sussex,
RH20**

cubitt&west
Helping you move forwards



Main features

- Beautifully presented home extended to provide superb space
- Stylish kitchen with granite worktops and integrated appliances
- Refitted bathroom and shower room
- Located in a quiet 'tucked away' position with no onward chain
- Driveway, former garage, utility and cloakroom

Accommodation

GROUND FLOOR

Entrance Hall

Lounge: 16'7 x 10'9 up to fitted cupboard (5.06m x 3.28m)

Kitchen: 14'3 x 7'8 (4.35m x 2.34m)

Dining Area: 13'7 x 8'8 (4.14m x 2.64m)

Utility Room: 5'5 x 4'0 (1.65m x 1.22m)

Cloakroom

FIRST FLOOR

Landing

Family Bathroom

Bedroom 1: 11'1 up to fitted wardrobes x 8'4 (3.38m x 2.54m)

En Suite Shower Room

Bedroom 2: 9'6 up to fitted wardrobes x 7'1 (2.90m x 2.16m)

OUTSIDE

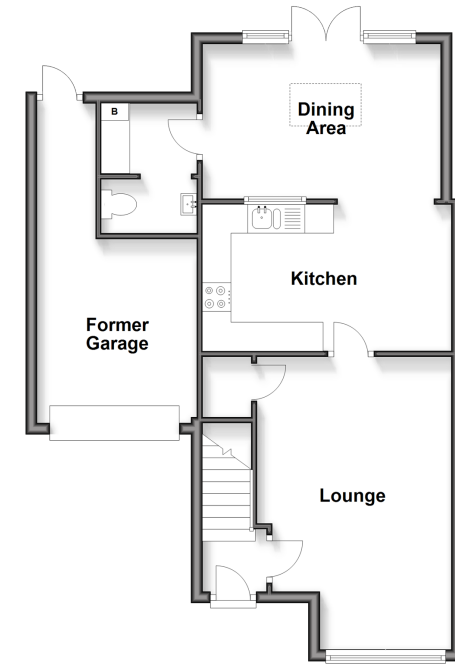
Former Garage

Driveway

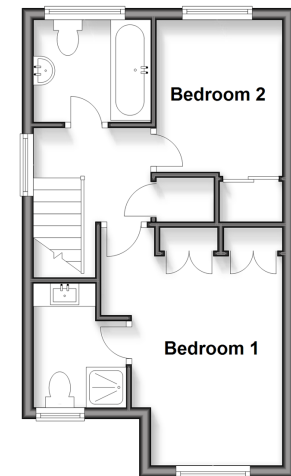
Front Garden

Rear Garden

Ground Floor
Approx. 57.9 sq. metres (622.9 sq. feet)



First Floor
Approx. 31.6 sq. metres (339.8 sq. feet)



Call Ashington - 01903 891444 ■ cubittandwest.co.uk

- Legal advice should be taken to verify fixtures/fittings, planning, alterations and/or lease details
- Appliances & services are untested, dimensions are approximate and floor plans are not to scale
- Through a Homewise Home For Life Plan people aged 60+ can secure this property for up to 50% less, by purchasing a Lifetime Lease



23603751/20251206/SEH/HM1