



Price

£700,000

Freehold

4x  2x  2x 

**Warminghurst Close,
Ashington, West Sussex,
RH20**

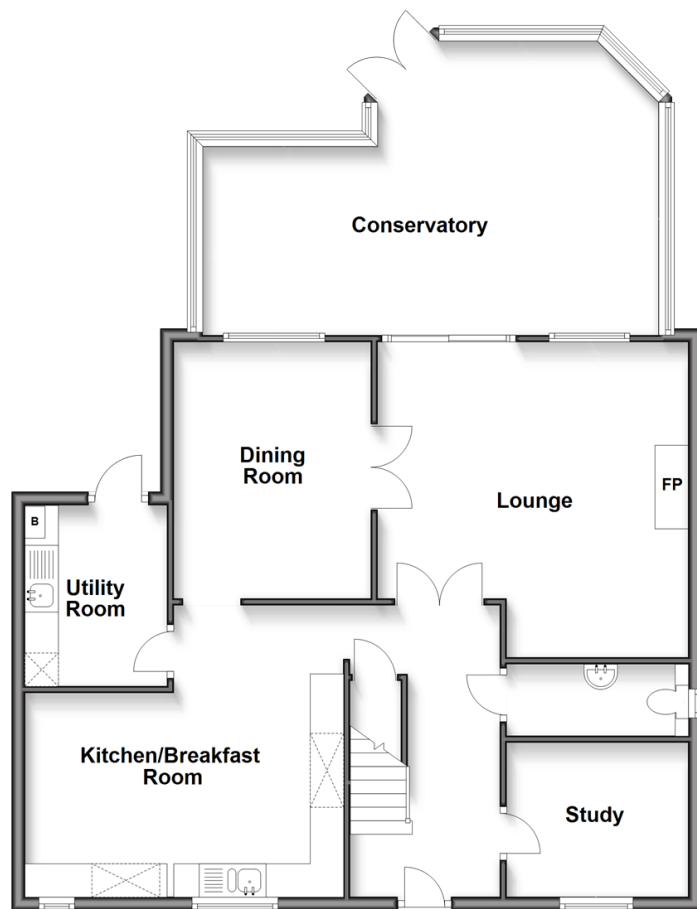
OVER 60?

Secure this property
for up to **59% less!**

cubitt&west
Helping you move forwards

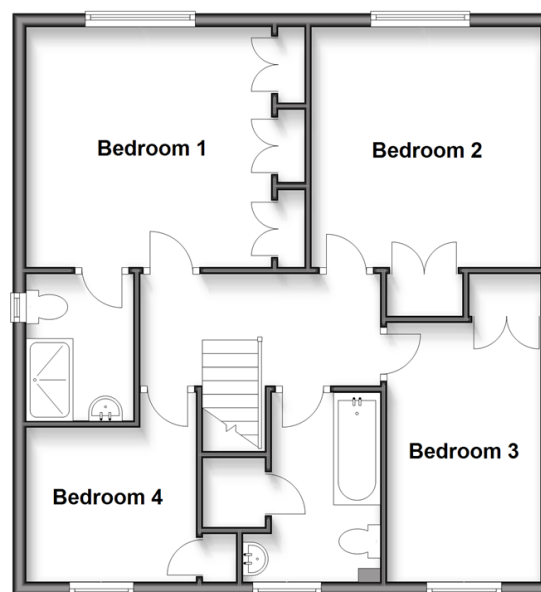
Ground Floor

Approx. 102.8 sq. metres (1106.6 sq. feet)



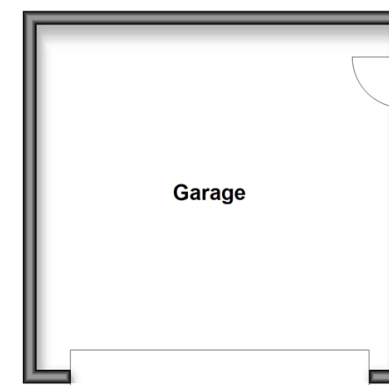
First Floor

Approx. 64.0 sq. metres (689.0 sq. feet)



Outbuilding

Approx. 27.6 sq. metres (297.5 sq. feet)



Accommodation

GROUND FLOOR

Entrance Hall

Study : 8'11 x 7'7 (2.72m x 2.31m)

Cloakroom

Kitchen/Breakfast Room: 14'9 x 14'3 (4.50m x 4.35m)

Utility Room: 8'9 x 5'5 (2.67m x 1.65m)

Dining Room: 12'6 x 9'7 (3.81m x 2.92m)

Lounge: 15'7 at widest point x 15'2 (4.75m x 4.63m)

Conservatory: 21'5 (6.53m) x 13'9 (4.19m)
narrowing to 8'6 (2.59m)

FIRST FLOOR

Landing

Family Bathroom

Bedroom 1: 11'8 up to fitted wardrobes x 11'7 (3.56m x 3.53m)

En Suite Shower Room

Bedroom 2: 11'6 x 11'2 up to fitted wardrobes (3.51m x 3.41m)

Bedroom 3: 13'2 x 7'7 up to fitted wardrobes (4.02m x 2.31m)

Bedroom 4: 8'1 x 6'5 up to fitted wardrobes (2.47m x 1.96m)

OUTBUILDING

Detached Double Garage

OUTSIDE

Front and Rear Garden

Driveway

Heated Swimming Pool



Main features

- Spacious home enjoying a quiet 'tucked away location'
- Superb kitchen/breakfast room with quartz worktops
- Secluded rear garden with heated swimming pool
- Close to local amenities
- Useful detached garage plus large driveway



Nearest Schools

Primary Schools: Ashington C of E School 0.5 miles.

Secondary Schools: Lower School, Rock Road site 5.2 miles, Upper School, Shooting Field site 5.5 miles,



Transport Information

Train Stations: Billingshurst 7.2 miles, Amberley 10.9 miles, Pulborough 10.1 miles.



Address

Warminghurst Close, Ashington, West Sussex, RH20



Directions

For directions to this property please contact us.



cubitt&west
Helping you move forwards

Call Ashington Branch 01903 891444 ■ cubittandwest.co.uk



■ Legal advice should be taken to verify fixtures/fittings, planning, alterations and/or lease details ■ Appliances & services are untested, dimensions are approximate and floor plans are not to scale
■ Through a Homewise Home For Life Plan people aged 60+ can secure this property for up to 59% less, by purchasing a Lifetime Lease.



23603561/20250424/LI/HM1