



OVER 60?

Secure this property
for up to **59% less!**

Price
£375,000

Freehold

2x  1x  1x 

**Rectory Place,
Ashington, West Sussex,
RH20**

cubitt&west
Helping you move forwards



Main features

- Modern 'cottage style' house in cul de sac
- Planning approval for single storey side extension ref AS/52/03
- Secluded rear garden backing onto countryside
- Double bedrooms with built in wardrobes
- No onward chain. Off road parking

Accommodation

GROUND FLOOR

Entrance Hall

Cloakroom

Kitchen: 10'9 x 5'5 (3.28m x 1.65m)

Lounge/Dining Room: 16'4 x 12'2 (4.98m x 3.71m)

FIRST FLOOR

Landing

Bathroom

Bedroom 1: 12'2 x 10'0 up to fitted wardrobes (3.71m x 3.05m)

Bedroom 2: 12'2 x 7'9 into fitted wardrobes (3.71m x 2.36m)

OUTSIDE

Front Garden

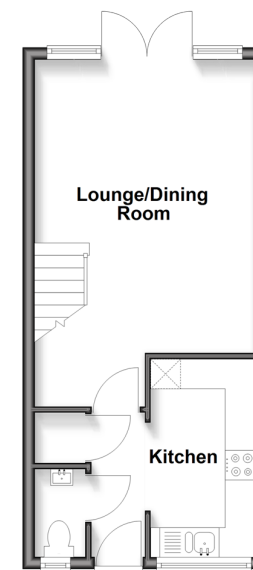
Off Road Parking

Rear Garden

Side Garden

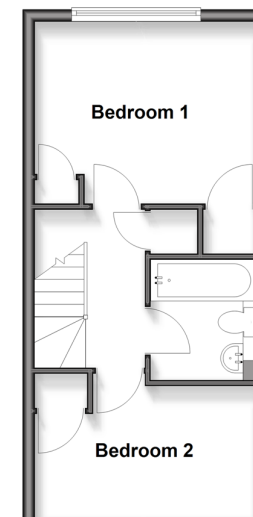
Ground Floor

Approx. 31.3 sq. metres (337.3 sq. feet)



First Floor

Approx. 31.3 sq. metres (337.3 sq. feet)



Call Ashington - 01903 891444 ■ cubittandwest.co.uk

- Legal advice should be taken to verify fixtures/fittings, planning, alterations and/or lease details
- Appliances & services are untested, dimensions are approximate and floor plans are not to scale
- Through a Homewise Home For Life Plan people aged 60+ can secure this property for up to 59% less, by purchasing a Lifetime Lease.



23602113/20250531/LI/HM1