

OVER 60?

Secure this property
for up to **59% less!**



Price

£725,000

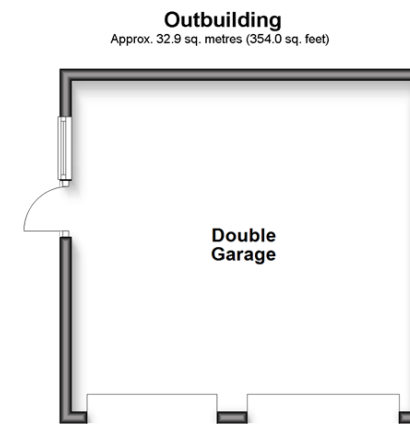
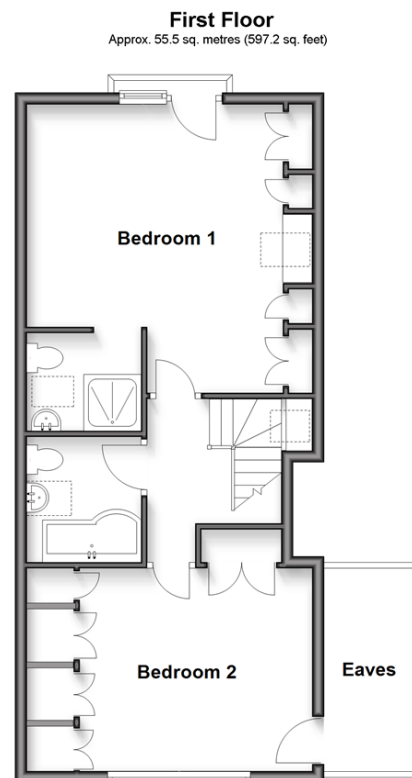
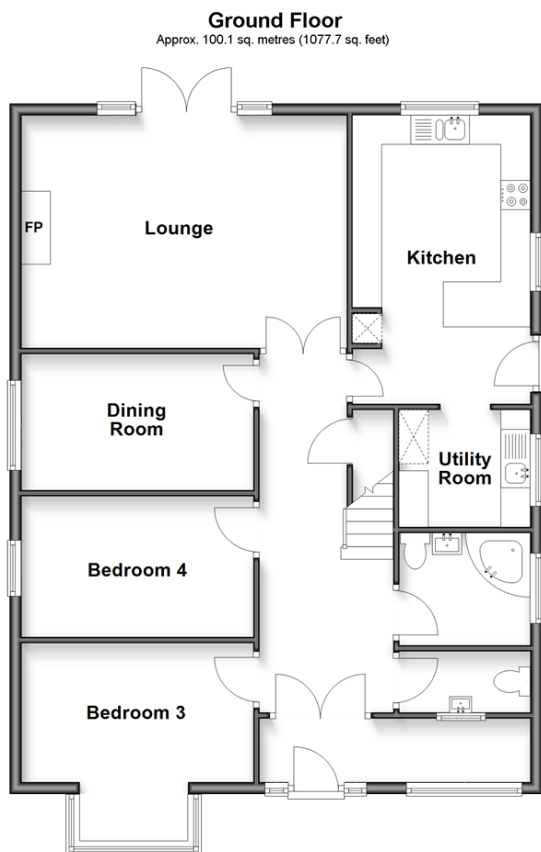
Freehold

4x  3x  2x 

Billingshurst Road, Ashington, West

Sussex, RH20

cubitt&west
Helping you move forwards



Accommodation

GROUND FLOOR

Porch
Entrance Hall
Cloakroom
Family Bathroom
Utility Room: 7'3 x 6'5 (2.21m x 1.96m)
Kitchen: 15'9 x 9'9 (4.80m x 2.97m)
Lounge: 18'3 x 13'1 (5.57m x 3.99m)

Dining Room: 13'0 x 7'6 (3.97m x 2.29m)
Bedroom 4: 12'9 x 7'9 (3.89m x 2.36m)
Bedroom 3: 13'10 x 10'8 into bay (4.22m x 3.25m)

FIRST FLOOR

Landing
Bathroom
Bedroom 1: 15'7 maximum x 12'2 up to fitted wardrobes (4.75m x 3.71m)
Juliette Balcony
En-Suite Shower Room
Bedroom 2: 13'0 up to fitted wardrobes x 12'1 (3.97m x 3.69m)

OUTSIDE

Off-Road Parking
Front Garden
Rear Garden

OUTBUILDING

Detached Double Garage



Main features

- Spacious chalet style bungalow which enjoys a non-estate position
- Generous lounge with views of the rear garden
- Large rear garden backing onto farmland and with some far reaching views
- Detached garage and ample off-road parking
- Easy access to the village amenities, countryside walks and the A24
- No onward chain



Nearest Schools

Primary School: Ashington C of E School Primary School 0.7 miles

Secondary School: Steyning Grammar School: Lower School, Rock Road site 4.8 miles, Upper School, Shooting



Transport Information

Train Stations:
Billingshurst 5.9 miles
Amberley 7.2 miles



Address

Billingshurst Road, Ashington, West Sussex, RH20



Directions

For directions to this property please contact us.



cubitt&west
Helping you move forwards

Call Ashington Branch 01903 891444 ■ cubittandwest.co.uk



■ Legal advice should be taken to verify fixtures/fittings, planning, alterations and/or lease details ■ Appliances & services are untested, dimensions are approximate and floor plans are not to scale
■ Through a Homewise Home For Life Plan people aged 60+ can secure this property for up to 59% less, by purchasing a Lifetime Lease.



23603615/20250324/HM1/HM1