

OVER 60?

Secure this property
for up to **59% less!**



Price

£700,000

Freehold

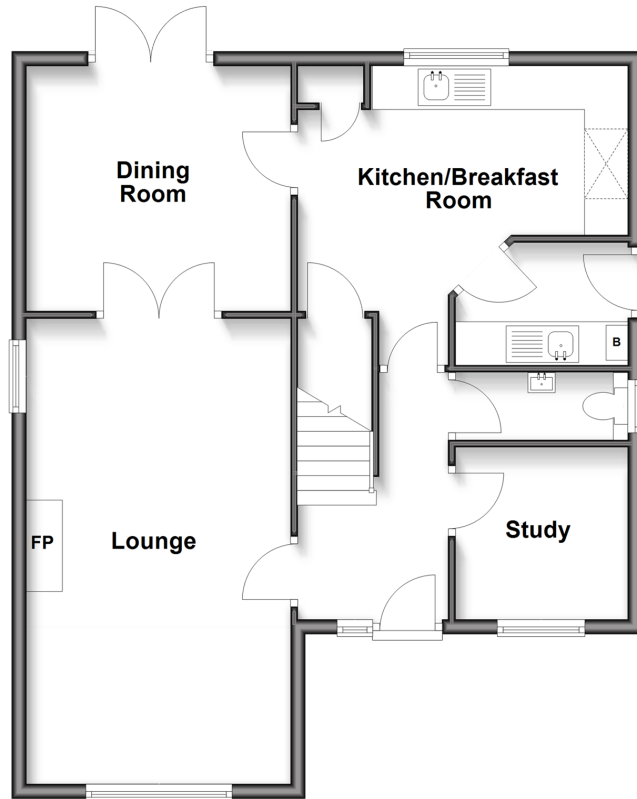
4x  2x  3x 

Cricketers Close, Ashington, West Sussex,
RH20

cubitt&west
Helping you move forwards

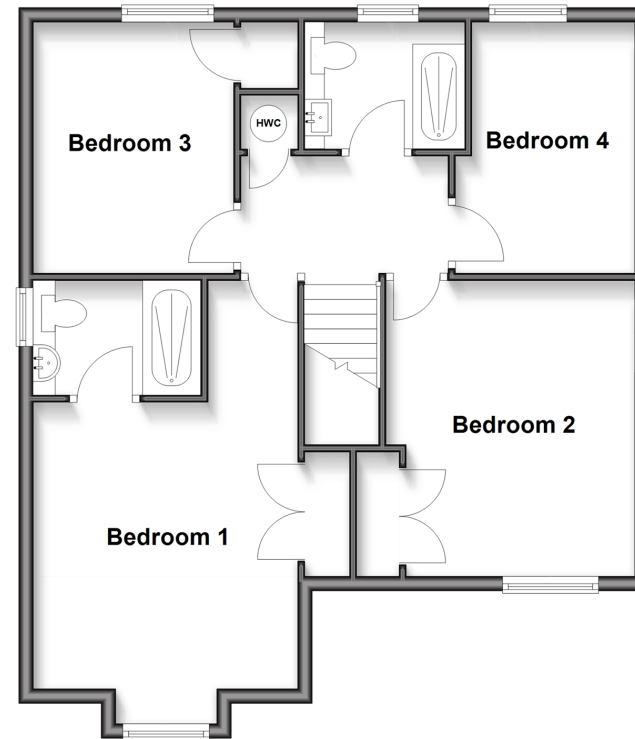
Ground Floor

Approx. 71.0 sq. metres (764.4 sq. feet)



First Floor

Approx. 69.1 sq. metres (743.5 sq. feet)



Accommodation

GROUND FLOOR

Entrance Hall

Study: 7'8 x 7'7 (2.34m x 2.31m)

Cloakroom: 7'9 x 7'6 (2.36m x 2.29m)

Kitchen/Breakfast Room: 14'6 x 11'1 (4.42m x 3.38m)

Utility Room : 7'6 x 5'5 (2.29m x 1.65m)

Dining Room: 11'9 x 11'0 (3.58m x 3.36m)

Lounge: 20'9 x 11'9 (6.33m x 3.58m)

FIRST FLOOR

Landing

Shower Room

Bedroom 1: 13'0 maximum x 11'9 up to fitted wardrobes (3.97m x 3.58m)

En-Suite Shower Room

Bedroom 2: 13'7 x 11'4 up to fitted wardrobes (4.14m x 3.46m)

Bedroom 3: 11'2 x 9'0 up to fitted wardrobes (3.41m x 2.75m)

Bedroom 4: 11'1 x 8'1 (3.38m x 2.47m)

OUTSIDE

Large Driveway

Home Office/Family Room

Front Garden

Rear Garden



Main features

- Attractive family home built by Hillreed Homes
- A corner plot position with a large driveway
- 4 good size bedrooms, 3 with built-in wardrobes
- The detached double garage has been adapted to an impressive home office/family room with bifold doors and a vaulted ceiling
- Low maintenance rear garden with decking
- Enjoying a central village location with countryside walks, shops and a great village pub



Nearest Schools

Primary School: Ashington C of E School Primary School 0.7 miles
Secondary School: Steyning Grammar School; Lower School, Rock Road site 3.4 miles, Upper School, Shooting Field site 5.3 miles



Transport Information

Train Stations:
ulborough 5.6 miles
Billingshurst 6.2 miles



Address

Cricketers Close, Ashington, West Sussex, RH20



Directions

For directions to this property please contact us.



cubitt&west
Helping you move forwards

Call Ashington Branch 01903 891444 ■ cubittandwest.co.uk



■ Legal advice should be taken to verify fixtures/fittings, planning, alterations and/or lease details ■ Appliances & services are untested, dimensions are approximate and floor plans are not to scale
■ Through a Homewise Home For Life Plan people aged 60+ can secure this property for up to 59% less, by purchasing a Lifetime Lease.



23603588/20250211/CT/HM1