

OVER 60?

Secure this property
for up to **59% less!**



Price

£700,000

Freehold

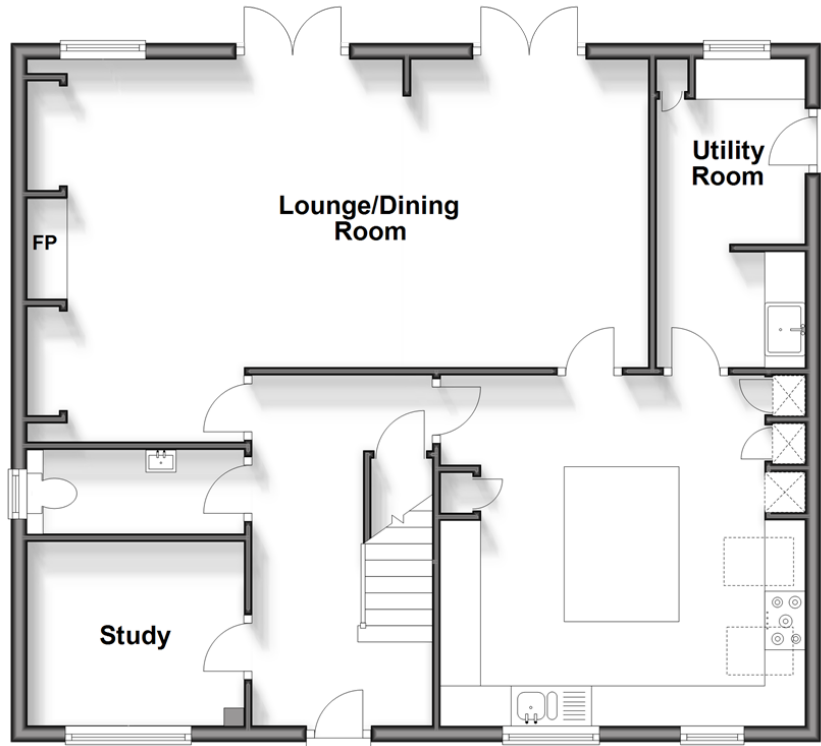
4x  2x  2x 

Covert Mead, Ashington, West Sussex,
RH20

cubitt&west
Helping you move forwards

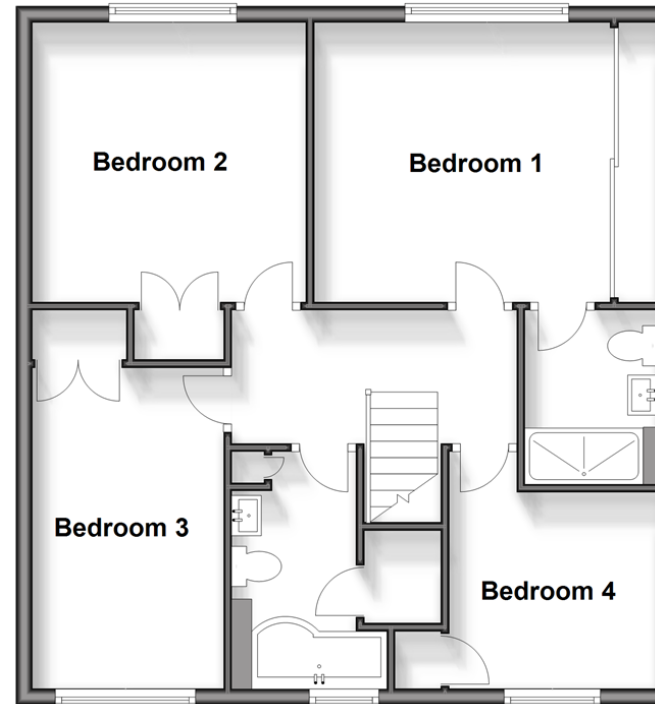
Ground Floor

Approx. 80.3 sq. metres (864.6 sq. feet)



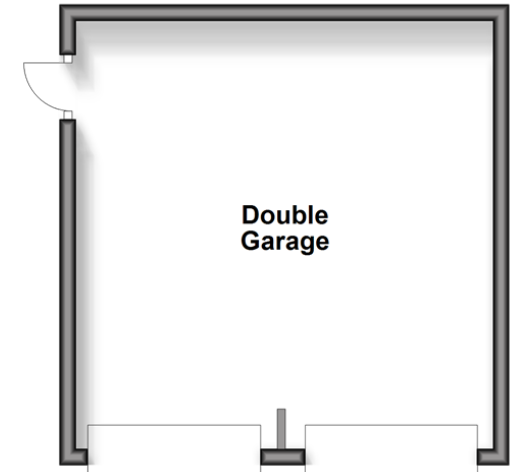
First Floor

Approx. 64.8 sq. metres (697.5 sq. feet)



Outbuilding

Approx. 27.6 sq. metres (297.5 sq. feet)



Accommodation

GROUND FLOOR

Entrance Hall

Study: 8'8 x 7'5 (2.64m x 2.26m)

Cloakroom

Lounge/Dining Room: 25'4 x 15'6 (7.73m x 4.73m)

Kitchen/Breakfast Room: 14'8 x 14'3 (4.47m x 4.35m)

Utility Room: 12'6 x 5'6 (3.81m x 1.68m)

FIRST FLOOR

Landing

Family Bathroom

Bedroom 1: 13'9 up to fitted wardrobes x 11'7 (4.19m x 3.53m)

En-Suite Shower Room

Bedroom 2: 11'7 up to fitted wardrobes x 11'1 (3.53m x 3.38m)

Bedroom 3: 13'1 up to fitted wardrobes x 7'8 (3.99m x 2.34m)

Bedroom 4: 8'5 up to fitted wardrobes x 8'0 (2.57m x 2.44m)

OUTBUILDING

Double Garage

OUTSIDE

Large Driveway

Front Garden

Rear Garden



Main features

- Spacious family home enjoying a quiet tucked away position
- Corner plot position backing onto countryside
- Fitted wardrobes in all of the bedrooms
- Fabulous refitted kitchen/breakfast room with integrated appliances
- 25' lounge/dining room with a log burner and views of the rear garden
- Detached double garage with a large driveway



Nearest Schools

Primary School: Ashington C of E School

Secondary School: Steyning Grammar School; Lower School, Rock Road site 3.4 miles, Upper School, Shooting Field site 5.6 miles



Transport Information

Train Stations:
Pulborough 5.4 miles
Billingshurst 6.1 miles



Address

Covert Mead, Ashington, West Sussex, RH20



Directions

For directions to this property please contact us.



cubitt&west
Helping you move forwards

Call Ashington Branch 01903 891444 ■ cubittandwest.co.uk



■ Legal advice should be taken to verify fixtures/fittings, planning, alterations and/or lease details ■ Appliances & services are untested, dimensions are approximate and floor plans are not to scale
■ Through a Homewise Home For Life Plan people aged 60+ can secure this property for up to 59% less, by purchasing a Lifetime Lease.



23603660/20250315/LI/HM1