



Price
£400,000

Freehold

3x  1x  2x 

**Fairfield Road,
Ashington, West Sussex,
RH20**

OVER 60?

Secure this property
for up to **59% less!**

cubitt & west
Helping you move forwards



Main features

- Semi-detached family house in popular location
- Walking distance to school and shops
- Double glazing, gas central heating
- Lovely secluded rear garden
- Garage, driveway plus additional parking to the front

Accommodation

GROUND FLOOR

- Porch
- Hall
- Cloakroom
- Kitchen: 7'8 x 7'5 (2.34m x 2.26m)
- Dining Room: 9'9 x 9'8 (2.97m x 2.95m)
- Lounge: 13'7 x 11'6 (4.14m x 3.51m)

FIRST FLOOR

- Landing
- Shower Room
- Bedroom 1: 13'8 x 9'9 into fitted wardrobes (4.17m x 2.97m)
- Bedroom 2: 10'1 x 9'9 (3.08m x 2.97m)
- Bedroom 3: 8'9 x 8'0 (2.67m x 2.44m)

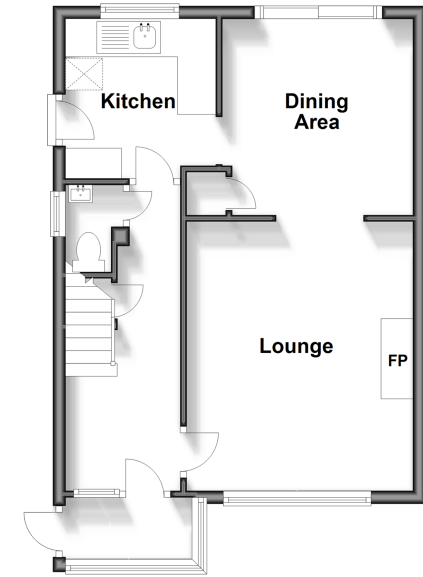
OUTSIDE

- Front Garden
- Driveway
- Garage: 21'9 x 8'7 (6.63m x 2.62m)
- Rear Garden

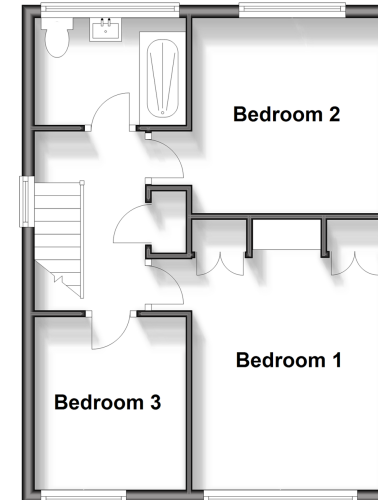
Call Ashington - 01903 891444 ■ cubittandwest.co.uk

- Legal advice should be taken to verify fixtures/fittings, planning, alterations and/or lease details
- Appliances & services are untested, dimensions are approximate and floor plans are not to scale
- Through a Homewise Home For Life Plan people aged 60+ can secure this property for up to 59% less, by purchasing a Lifetime Lease.

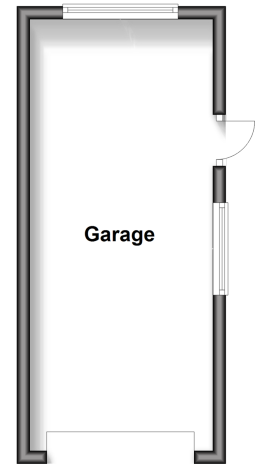
Ground Floor
Approx. 42.2 sq. metres (454.3 sq. feet)



First Floor
Approx. 40.1 sq. metres (431.6 sq. feet)



Outbuilding
Approx. 19.3 sq. metres (207.9 sq. feet)



23603651/20241109/HM1/HM1