



Price
£585,000

Freehold

4x  3x  2x 

**Church Close,
Ashington, West Sussex,
RH20**

OVER 60?

Secure this property
for up to **59% less!**

cubitt & west
Helping you move forwards



Main features

- Superb home in a sought after cul de sac close to school and amenities
- Very well presented with high specification kitchen
- Large luxurious en suite shower room to Bedroom 1
- Spacious lounge with bi-fold doors opening onto a fabulous garden
- Double width driveway

Accommodation

GROUND FLOOR

Entrance Hall
 Cloakroom
 Kitchen: 11'11 x 8'11 (3.63m x 2.72m)
 Utility Room: 9'6 x 6'11 (2.90m x 2.11m)
 Lounge: 17'7 x 17'6 (5.36m x 5.34m)
 Dining Room: 11'11 x 10'8 (3.63m x 3.25m)

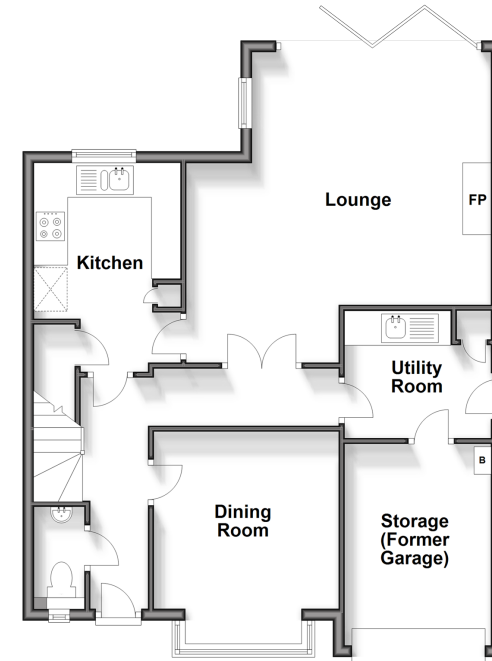
FIRST FLOOR

Landing
 Family Bathroom
 Family Shower Room
 Bedroom 1: 18'6 x 11'6 into fitted wardrobes (5.64m x 3.51m)
 En-Suite Shower Room
 Bedroom 2: 10'10 x 9'4 into fitted wardrobes (3.30m x 2.85m)
 Bedroom 3: 10'9 x 9'4 up to fitted wardrobes (3.28m x 2.85m)
 Bedroom 4: 9'2 x 6'6 (2.80m x 1.98m)

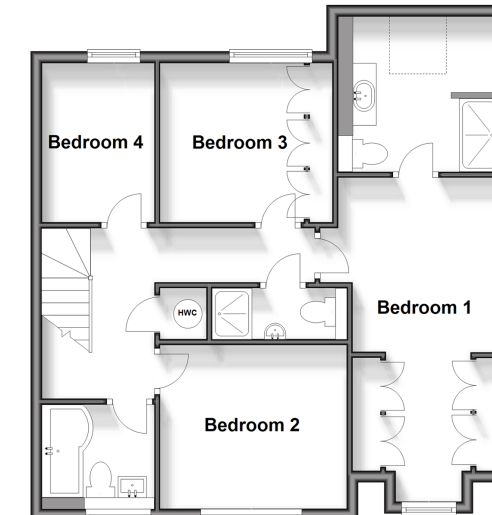
OUTSIDE

Front Garden
 Driveway
 Garage/Ancillary Room
 Rear Garden
 *Garage cannot accommodate a standard car

Ground Floor
 Approx. 72.8 sq. metres (783.9 sq. feet)



First Floor
 Approx. 63.6 sq. metres (684.4 sq. feet)



Call Ashington - 01903 891444 ■ cubittandwest.co.uk

- Legal advice should be taken to verify fixtures/fittings, planning, alterations and/or lease details
- Appliances & services are untested, dimensions are approximate and floor plans are not to scale
- Through a Homewise Home For Life Plan people aged 60+ can secure this property for up to 59% less, by purchasing a Lifetime Lease.



23602770/20240907/CR/HM1