

**OVER 60?**

Secure this property  
for up to **59% less!**



cubitt  
& west  
FOR SALE  
01323 444444

**Price**

**£520,000**

**Freehold**

3x  2x  3x 

Mill Lane, Ashington, West Sussex, RH20

**cubitt & west**  
Helping you move forwards





## Main features

- Fabulous and unique detached home enjoying a non estate position
- Wrap around plot with beautiful well stocked gardens
- Flexible accommodation ideal for multi generational living
- Double garage and driveway
- Views towards South Downs

## Accommodation

### GROUND FLOOR

- Inner Hall
- Shower Room
- Kitchen/Diner: 24'6 x 11'0 (7.47m x 3.36m)
- Lounge: 15'4 x 12'4 (4.68m x 3.76m)
- Sitting Room: 10'5 x 9'2 (3.18m x 2.80m)
- Study: 10'5 x 9'0 (3.18m x 2.75m)

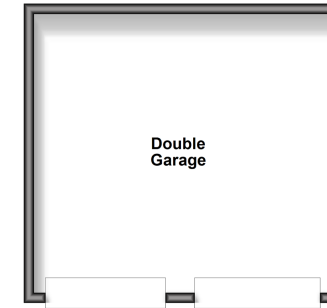
### FIRST FLOOR

- Landing
- Bathroom
- Bedroom 1: 16'7 x 10'5 into fitted wardrobes (5.06m x 3.18m)
- Bedroom 2: 12'7 up to fitted wardrobes x 10'2 (3.84m x 3.10m)
- Bedroom 3: 20'3 up to fitted wardrobes x 12'6 (6.18m x 3.81m)

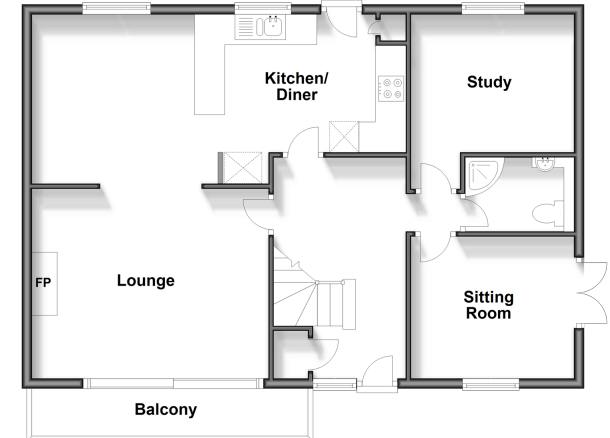
### OUTSIDE

- Front Garden
- Driveway
- Double Garage
- Side Garden
- Rear Garden

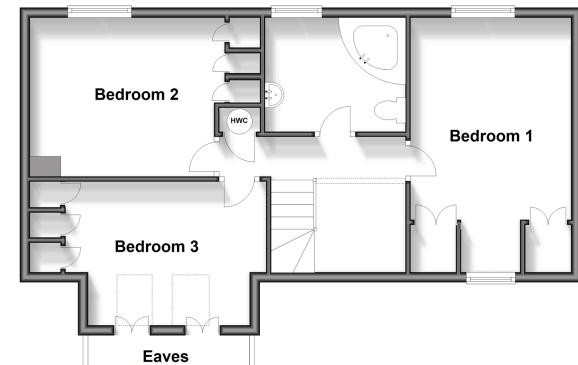
Lower Ground Floor  
Approx. 32.6 sq. metres (351.0 sq. feet)



Ground Floor  
Approx. 77.1 sq. metres (830.0 sq. feet)



First Floor  
Approx. 57.2 sq. metres (615.3 sq. feet)



Call Ashington - 01903 891444 ■ [cubittandwest.co.uk](http://cubittandwest.co.uk)

- Legal advice should be taken to verify fixtures/fittings, planning, alterations and/or lease details
- Appliances & services are untested, dimensions are approximate and floor plans are not to scale
- Through a Homewise Home For Life Plan people aged 60+ can secure this property for up to 59% less, by purchasing a Lifetime Lease.



23603632/20240905/CR/HM1