



Price

£875,000

Freehold

5x  3x  3x 

**Penn Stone Way,
Thakeham, West Sussex,
RH20**

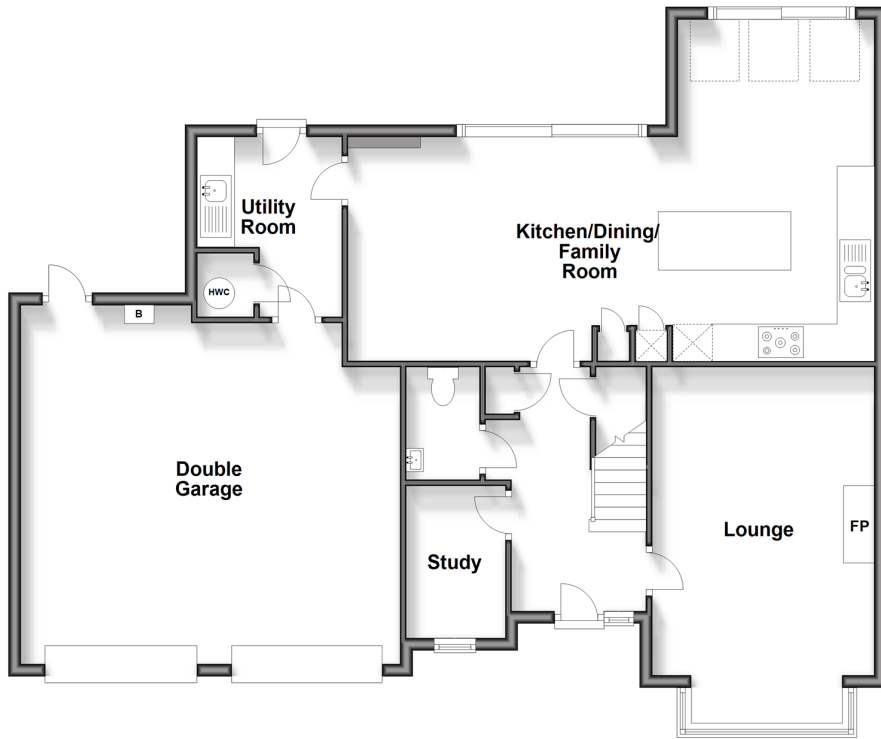
OVER 60?

Secure this property
for up to **59% less!**

cubitt & west
Helping you move forwards

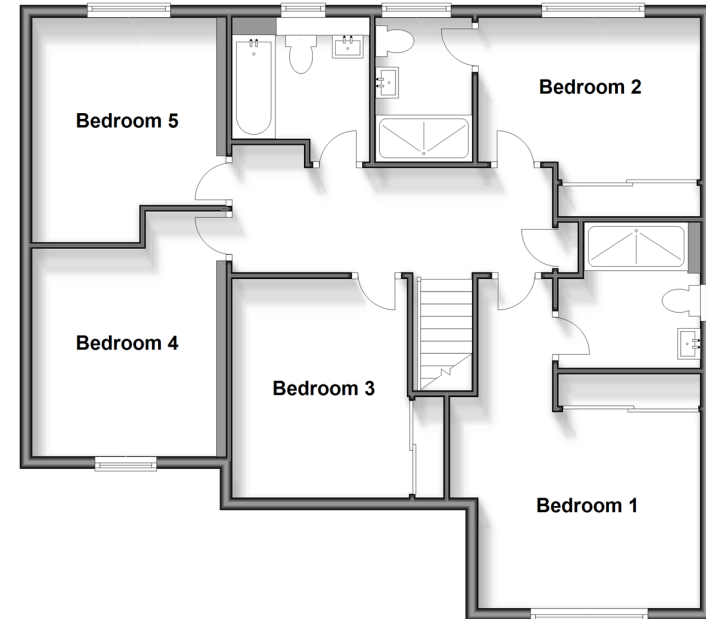
Ground Floor

Approx. 115.0 sq. metres (1238.2 sq. feet)



First Floor

Approx. 88.4 sq. metres (951.1 sq. feet)



Accommodation

GROUND FLOOR

- Hall
- Cloakroom
- Kitchen/Dining/Family Room: 28'1 x 11'3 (8.57m x 3.43m) plus 10'5 x 6'2 (3.18m x 1.88m)
- Utility: 7'6 x 5'9 up to fitted cupboard (2.29m x 1.75m)
- Study: 8'0 x 5'3 (2.44m x 1.60m)
- Lounge: 18'9 x 11'8 (5.72m x 3.56m)

FIRST FLOOR

- Galleried Landing
- Family Bathroom
- Principle Bedroom: 13'5 maximum x 10'4 up to fitted wardrobes (4.09m x 3.15m)
- En suite Shower
- Bedroom 2: 11'6 x 8'5 up to fitted wardrobes (3.51m x 2.57m)

- En suite Shower
- Bedroom 3: 11'6 x 9'3 up to fitted wardrobes (3.51m x 2.82m)
- Bedroom 4: 11'0 x 9'8 (3.36m x 2.95m)
- Bedroom 5: 11'9 x 9'8 (3.58m x 2.95m)

OUTSIDE

- Front Garden
- Double Garage: 20'0 x 18'3 (6.10m x 5.57m)
- Driveway
- Rear Garden



Main features

- Immaculately presented 'Bloomsbury' style home
- Constructed by award winning Oakford Homes in 2018
- Located in an enviable position overlooking Abingworth Pond
- Five generous size bedrooms, 2 with en suites
- Superb kitchen/dining/family room opening onto a private and attractive rear garden



Nearest Schools

Primary Schools: Thakeham Primary School 1.4 miles, Storrington Primary School 2.6 miles

Secondary School: Steyning Grammar School; Lower School, Rock Road site 1.4 miles, Upper School, Shooting



Transport Information

Train Stations: Pulborough 5.1 miles, Billingshurst 6.3 miles, Amberley 6.8 miles



Address

Penn Stone Way, Thakeham, West Sussex, RH20



Directions

For directions to this property please contact us.



cubitt&west
Helping you move forwards

Call Ashington Branch 01903 891444 ■ cubittandwest.co.uk



- Legal advice should be taken to verify fixtures/fittings, planning, alterations and/or lease details
- Appliances & services are untested, dimensions are approximate and floor plans are not to scale
- Through a Homewise Home For Life Plan people aged 60+ can secure this property for up to 59% less, by purchasing a Lifetime Lease.



23603597/20240723/CR/HM1