



Price

£450,000

Freehold

3x  2x  1x 

Maple Gardens, Old
London Road,
Washington, West
Sussex, RH20

cubitt & west
Helping you move forwards



Main features

- **New build semi-detached house enjoying a non estate position within easy reach of scenic National Trust land and the A24**
- **Exceptional specification**
- **Underfloor heating, bifold doors**
- **Driveway and landscaped garden**
- **10 year ICW Structural Warranty**

Accommodation

GROUND FLOOR

Hall
 Cloakroom
 Kitchen/Breakfast Room: 14'7 x 10'10 (4.45m x 3.30m)
 Lounge/Dining Room: 19'3 x 17'6 (5.87m x 5.34m)

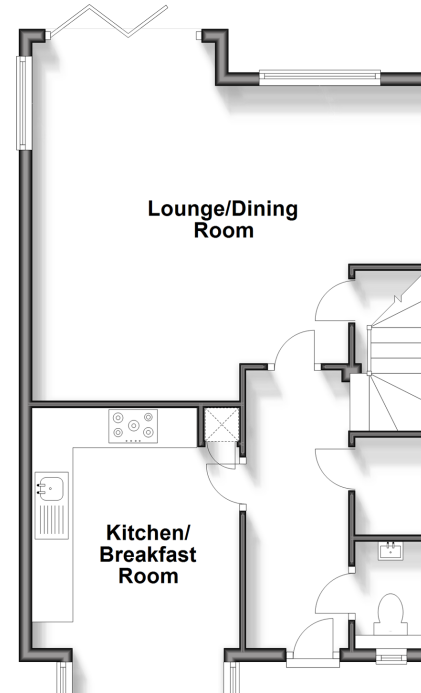
FIRST FLOOR

Landing
 Bathroom
 Bedroom 1: 11'4 x 8'7 minimum (3.46m x 2.62m)
 En suite Shower Room
 Bedroom 2: 10'2 x 8'1 (3.10m x 2.47m)
 Bedroom 3: 10'2 x 8'1 (3.10m x 2.47m)
 Study: 7'6 x 6'9 (2.29m x 2.06m)

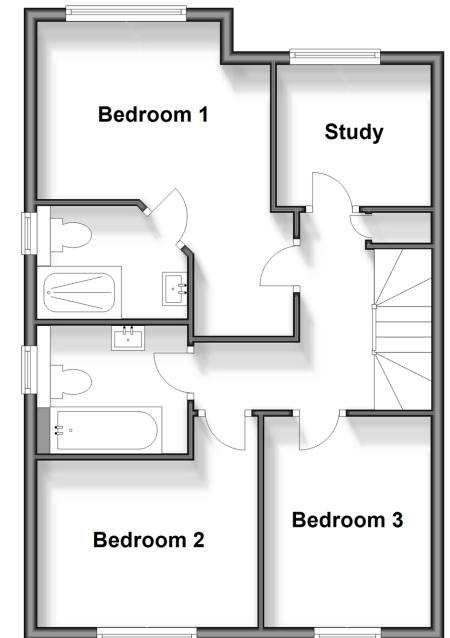
OUTSIDE

Front Garden
 Rear Garden
 Driveway

Ground Floor
 Approx. 53.6 sq. metres (577.3 sq. feet)



First Floor
 Approx. 51.6 sq. metres (555.3 sq. feet)



Call Ashington - 01903 891444 ■ cubittandwest.co.uk

■ Legal advice should be taken to verify fixtures/fittings, planning, alterations and/or lease details

■ Appliances & services are untested, dimensions are approximate and floor plans are not to scale



23603562/20240528/CR/HM1