

Wyresdale,
Bracknell, Berkshire, RG12 0QW

£1,100 Per Month

Luff
ASSOCIATES
letting specialists



Available 9th August 2024

Luff Associates are proud to offer this very well presented one bedroom back to back house in a small cul de sac location close to amenities in Forest Park.

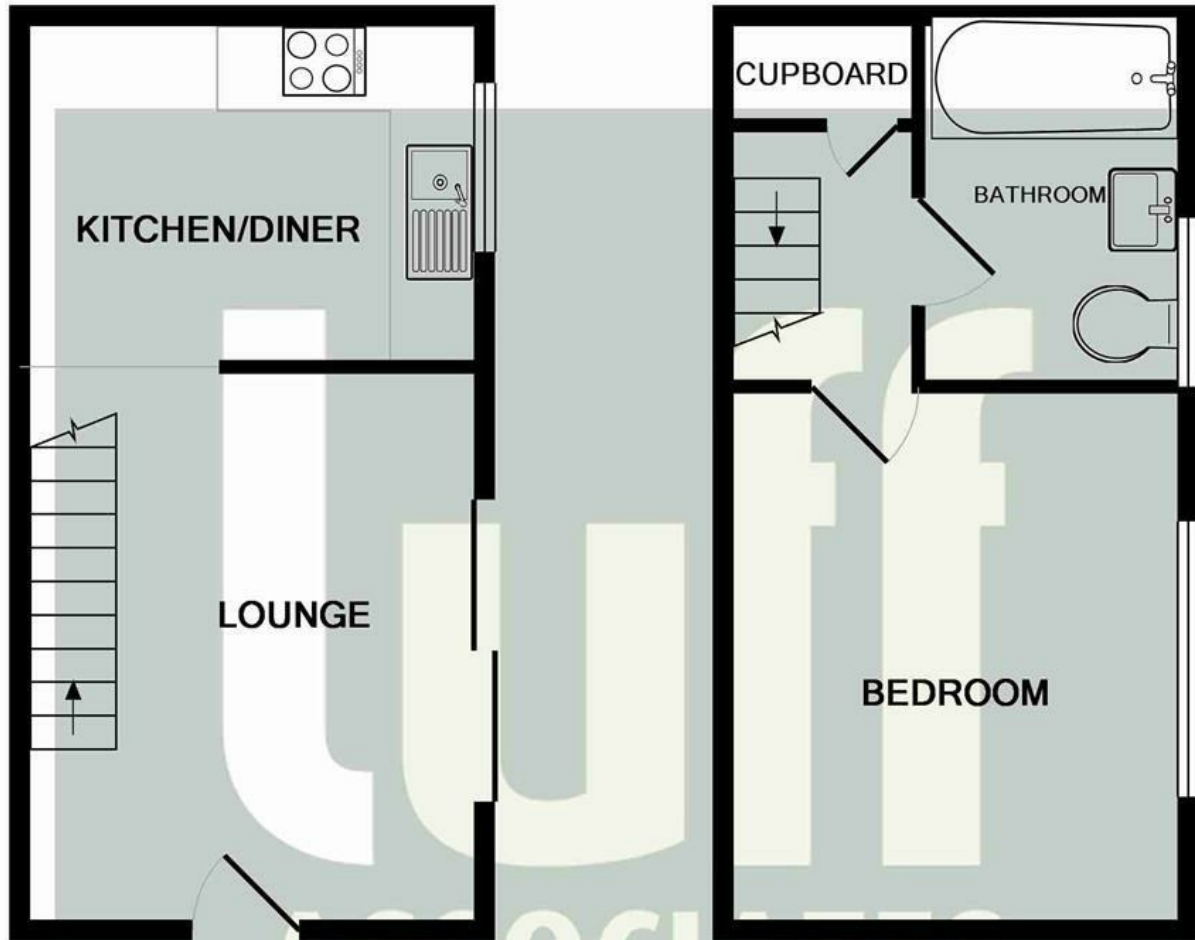
The accommodation comprises of a good size lounge with patio doors to own garden, kitchen with appliances, on the first floor there is a double bedroom and bathroom with shower.

Private own rear garden with shed and gate through to allocated parking.

Unfurnished.
Regret No Pets
Council Tax band C - £1,836.47pa
Disclaimer; Council Tax charges change annually



1a Guildford Road, Frimley Green, Camberley, Surrey, GU16 6NL
Tel: 01252 834949 admin@luff-associates.com www.luff-associates.com



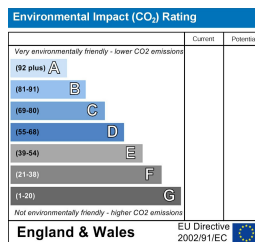
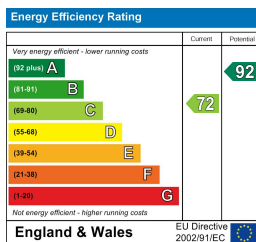
GROUND FLOOR
APPROX. FLOOR
AREA 232 SQ.FT.
(21.5 SQ.M.)

1ST FLOOR
APPROX. FLOOR
AREA 232 SQ.FT.
(21.5 SQ.M.)

TOTAL APPROX. FLOOR AREA 464 SQ.FT. (43.1 SQ.M.)

Whilst every attempt has been made to ensure the accuracy of the floor plan contained here, measurements of doors, windows, rooms and any other items are approximate and no responsibility is taken for any error, omission, or mis-statement. This plan is for illustrative purposes only and should be used as such by any prospective purchaser. The services, systems and appliances shown have not been tested and no guarantee as to their operability or efficiency can be given

Made with Metropix ©2015



In partnership with
LUFF & WILKIN
sales 01252 838 899

Disclaimer: The Rent advertised does not include the Tenancy Deposit or any fee's or charges which are payable. Further information can be obtained from the agent or at the point of viewing. These details have been prepared and issued in good faith and do not constitute representations of fact or form part of any offer or contract Luff Associates Ltd have not carried out a structural survey of the property, nor have we tested any of the services or appliances. All measurements are intended to be approximate only and all photographs show parts of the property as they were at the time they were taken. Any reference to alterations or particular use of the property wherever stated, is not a statement that planning, building regulations or other relevant sent has been obtained