



Holland Gardens, Fleet GU51 3NE

**£1,700 PCM**

**luff**  
**ASSOCIATES**  
letting specialists



Holland Gardens,  
Fleet GU51 3NE

**£1,700 PCM**

- End terraced house
- 24ft lounge/diner
- Garage
- Private rear garden

- Three double bedrooms
- Modern kitchen
- Off road parking
- Less than a mile to Fleet town centre



## Description

\*\*\*CURRENTLY BEING REDECORATED\*\*\*

This spacious three double bedroom, end terraced family home is ideally located in this cul-de-sac and is less than a mile from Fleet town centre and about 1.5 miles from Fleet mainline station. The accommodation consists of an entrance porch that leads to the large double aspect 24ft lounge/diner with door through to the modern kitchen. Upstairs there are three double bedrooms and the family bathroom. Externally there is an easy to maintain rear garden, plus a garage and driveway parking to the front.

Unfurnished and available 21st January 2026  
Regretfully NO pets.

Council tax band: C

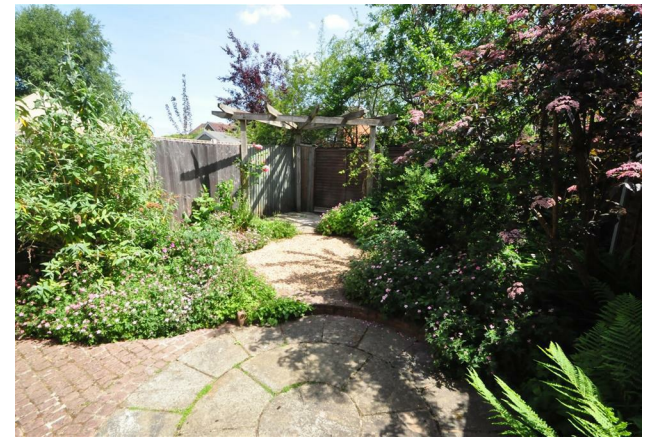
EPC rating: D

Minimum tenancy length - 12 months with a 6 month break clause

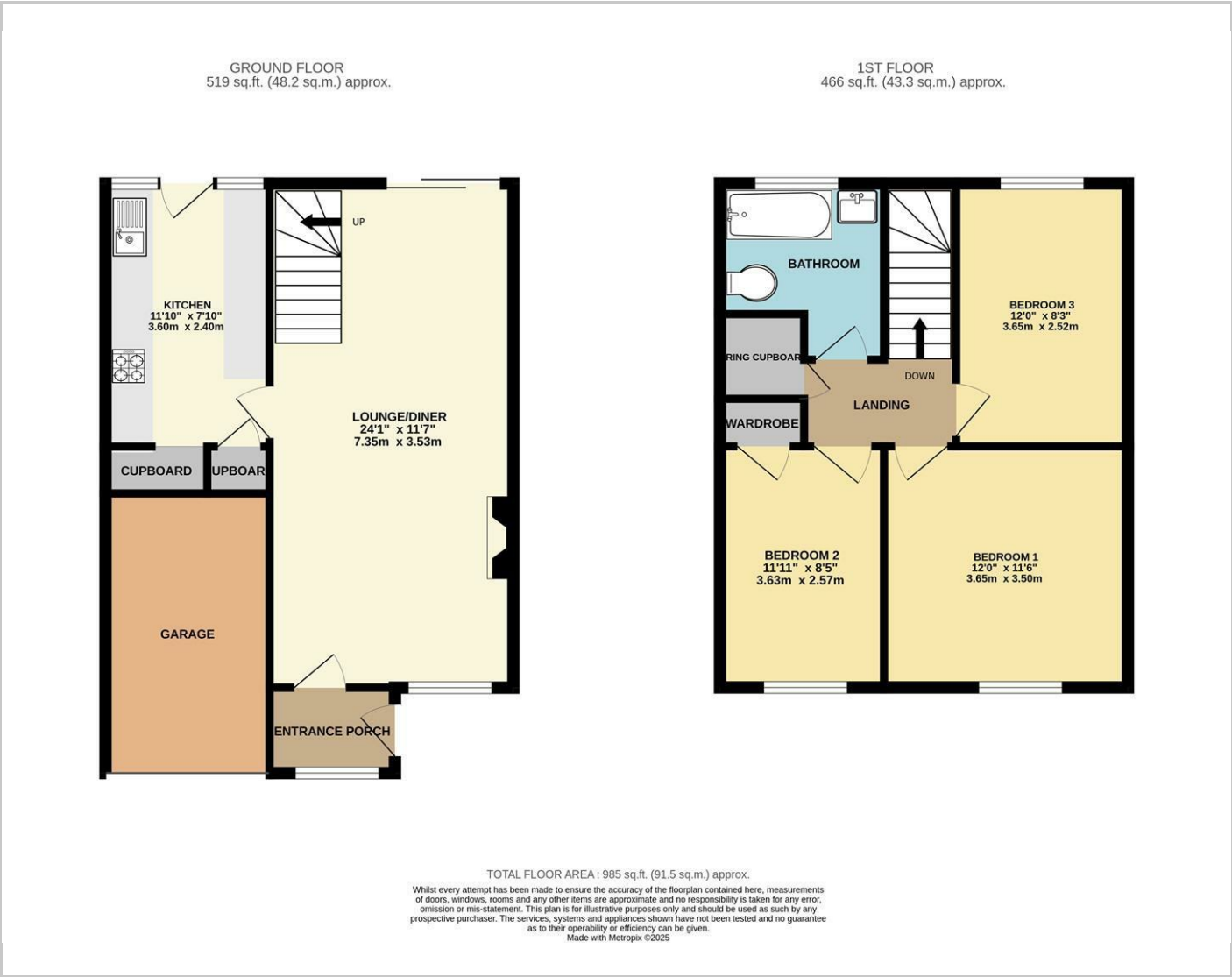
Deposit = 5 weeks rent - £1,962

First Months rent - £1,700

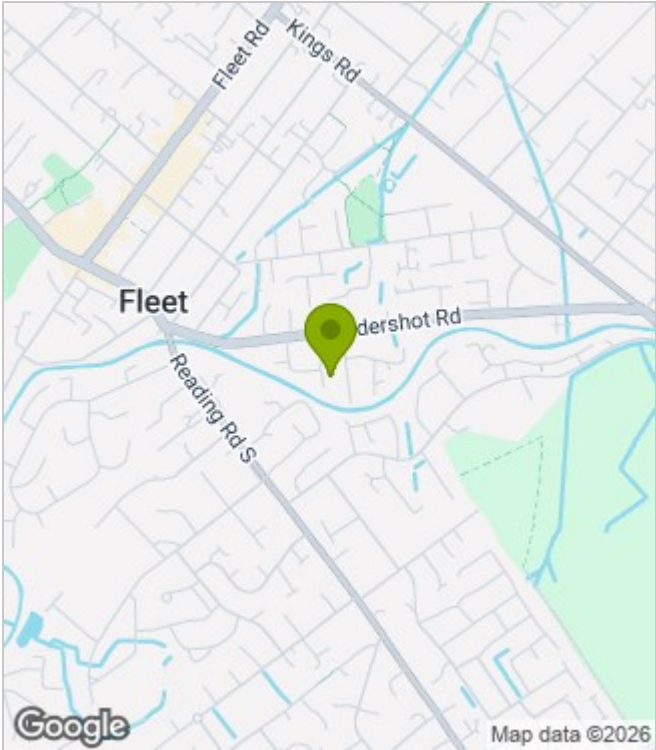
Holding deposit - £392 (will be deducted from the first months rent upon move in)



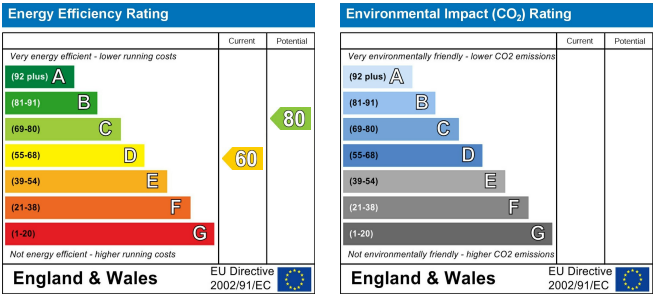
Floor Plans



Area Map



Energy Performance Graph



In partnership with

**LUFF & WILKIN**

sales 01252 838 899

Disclaimer: The Rent advertised does not include the Tenancy Deposit or any fee's or charges which are payable. Further information can be obtained from the agent or at the point of viewing. These details have been prepared and issued in good faith and do not constitute representations of fact or form part of any offer or contract Luff Associates Ltd have not carried out a structural survey of the property, nor have we tested any of the services or appliances. All measurements are intended to be approximate only and all photographs show parts of the property as they were at the time they were taken. Any reference to alterations or particular use of the property wherever stated, is not a statement that planning, building regulations or other relevant sent has been obtained