



Morton Close, , Frimley Green GU16 9UY

**£1,900 PCM**

**Luff**  
**ASSOCIATES**  
letting specialists

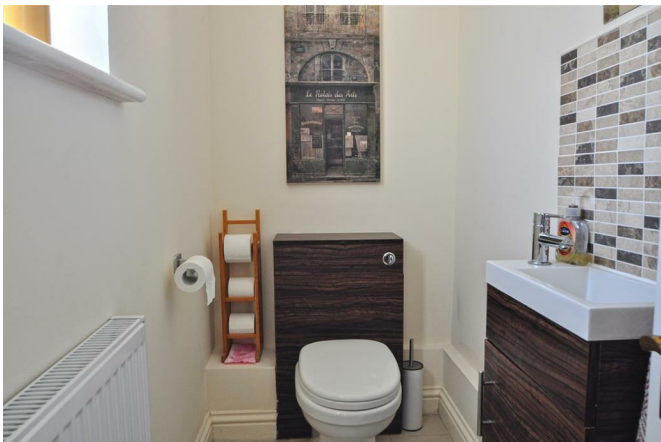




Morton Close,  
, Frimley Green, GU16 9UY

**£1,900 PCM**

- Detached family home
- Large sitting room
- Downstairs cloakroom
- Private rear garden
- Three bedrooms
- Modern kitchen
- Garage and driveway
- Unfurnished





## Description

This very well presented detached family home is located in a nice peaceful location in Frimley, and has the added advantage of a garage and off road parking for three cars.

The accommodation comprises a large extended lounge/diner, modern fitted kitchen with breakfast room/study and a downstairs cloakroom. On the first floor there are 2 double bedrooms and a small single bedroom and a family bathroom with shower over the bath. Outside is an enclosed rear garden with decking area and raised beds and borders.

One cat may be considered but no dogs allowed.

Unfurnished and available 6th November 2025.

Council tax band: D

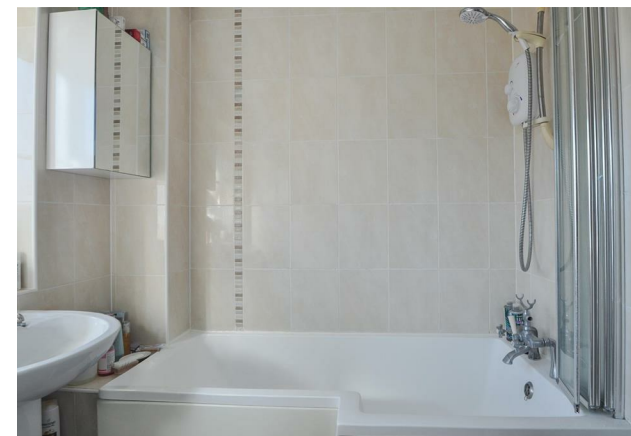
EPC rating: D

Minimum tenancy length - 12 months with a 6 month break clause

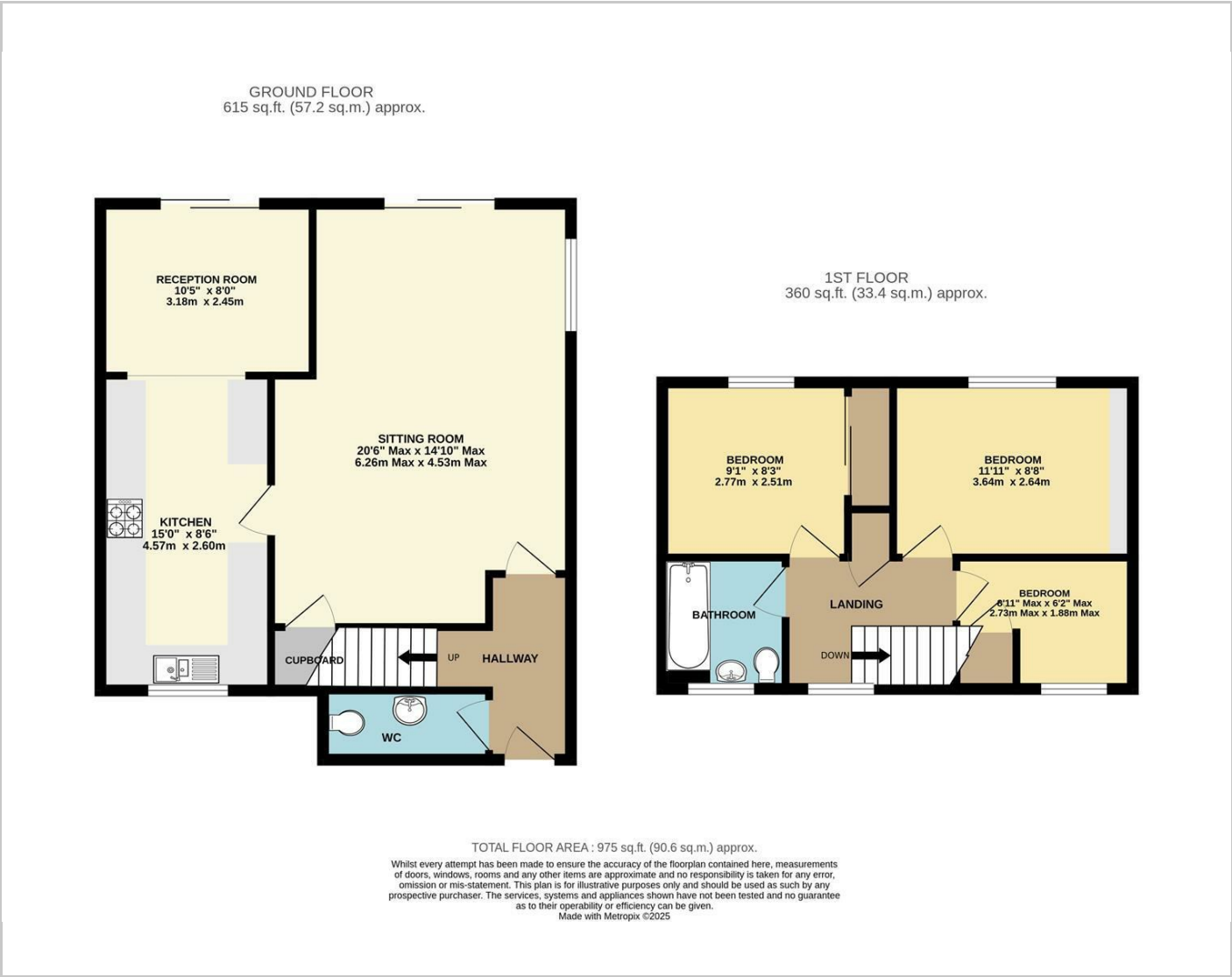
Deposit = 5 weeks rent - £2,192

First Months rent - £1,900

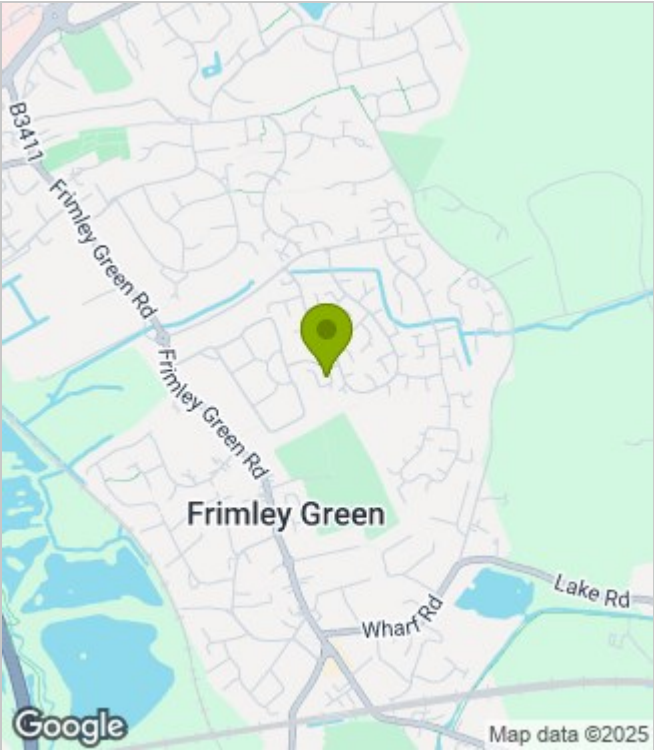
Holding deposit - £438 (will be deducted from the first months rent upon move in)



Floor Plans



Area Map



Energy Performance Graph

