

Lovejoy Road,
Warfield, Bracknell, RG42 6EZ

£3,400 Per Month

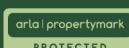


Available 1st August 2025

Luff Associates are proud to offer this four-bedroom property, in the Woodhurst Park Development, set in a beautiful country park location with acres of landscaped open space.

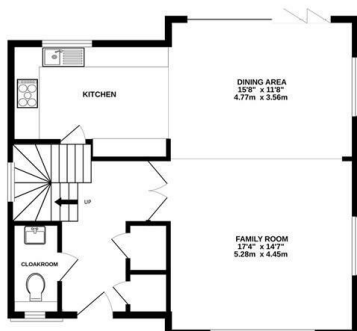
With an open plan kitchen/dining /family area to the ground floor with underfloor heating. Located on the first floor is the living room, which features a wrap around balcony, bedroom 1 which benefits from an ensuite and fitted wardrobes. Bedroom 4 is also located on the first floor. Bedrooms 2 and 3 are located on the 2nd floor, of which bedroom 2 also has an ensuite with fitted wardrobes.

Single garage, driveway and 2 further parking spaces
1.4 miles from the Lexicon
Unfurnished
Regret No Pets
Council Tax Band G £3617.68 pa
Disclaimer: council tax charges may change yearly

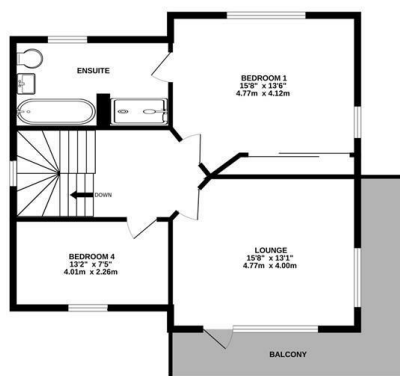


1a Guildford Road, Frimley Green, Camberley, Surrey, GU16 6NL
Tel: 01252 834949 admin@luff-associates.com www.luff-associates.com

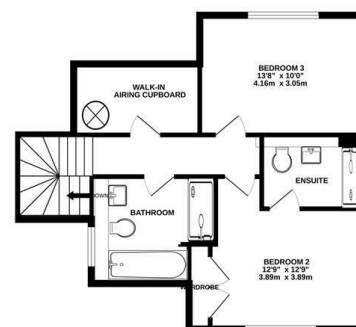
GROUND FLOOR
709 sq.ft. (65.9 sq.m.) approx.



1ST FLOOR
703 sq.ft. (65.3 sq.m.) approx.

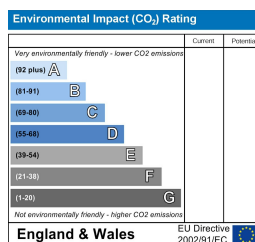
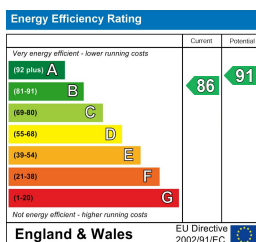


2ND FLOOR
578 sq.ft. (53.7 sq.m.) approx.



TOTAL FLOOR AREA : 1990 sq.ft. (184.9 sq.m.) approx.

Whilst every attempt has been made to ensure the accuracy of the floorplan contained here, measurements of doors, windows, rooms and any other items are approximate and no responsibility is taken for any error, omission or mis-statement. This plan is for illustrative purposes only and should be used as such by any prospective purchaser. The services, systems and appliances shown have not been tested and no guarantee as to their operability or efficiency can be given.
Made with Metropix ©2023



In partnership with
LUFF & WILKIN
sales 01252 838 899

Disclaimer: The Rent advertised does not include the Tenancy Deposit or any fee's or charges which are payable. Further information can be obtained from the agent or at the point of viewing. These details have been prepared and issued in good faith and do not constitute representations of fact or form part of any offer or contract Luff Associates Ltd have not carried out a structural survey of the property, nor have we tested any of the services or appliances. All measurements are intended to be approximate only and all photographs show parts of the property as they were at the time they were taken. Any reference to alterations or particular use of the property wherever stated, is not a statement that planning, building regulations or other relevant sent has been obtained