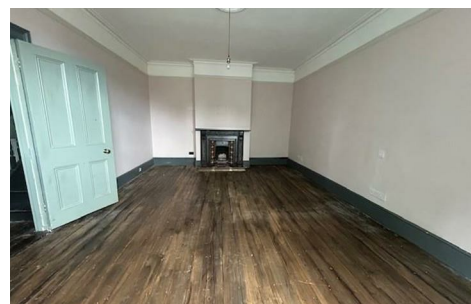


Alexandra Road,
Farnborough, GU14 6DD

£1,800 Per Month



*** Available Immediately***

Luff Associates are proud to offer this large apartment with 3 large bedrooms, 2 further reception rooms, bathroom and shower room over 2 floors in a large semi-detached property in Farnborough, close to local train links and town centre.

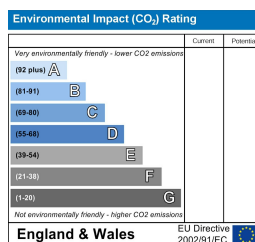
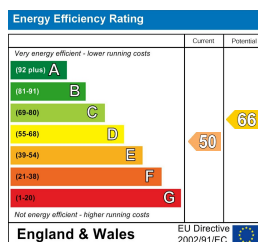
This unique Victorian property built 1900 is entered through bi-folding doors at the rear of the building with many original features to include enclosed rear garden, parking and secure entrance gates. Large fitted kitchen, including two hobs and two ovens, storage and large extractor fan, utility room with washing machine separate from the kitchen, feature fireplaces in many rooms, tall ceilings, sash windows and wide hallways, further loft room included.

Unfurnished
Regret No Pets
Council Tax band C £ 1966.96PA
Disclaimer; Council tax charges change yearly

- Large Victorian apartment with three bedrooms
- Enclosed rear garden
- Gated entry
- Water bill included
- Gardener Included
- Exposed floor boards
- Unique features
- Two reception rooms



1a Guildford Road, Frimley Green, Camberley, Surrey, GU16 6NL
Tel: 01252 834949 admin@luff-associates.com www.luff-associates.com



In partnership with
LUFF & WILKIN
sales 01252 838 899

Disclaimer: The Rent advertised does not include the Tenancy Deposit or any fee's or charges which are payable. Further information can be obtained from the agent or at the point of viewing. These details have been prepared and issued in good faith and do not constitute representations of fact or form part of any offer or contract Luff Associates Ltd have not carried out a structural survey of the property, nor have we tested any of the services or appliances. All measurements are intended to be approximate only and all photographs show parts of the property as they were at the time they were taken. Any reference to alterations or particular use of the property wherever stated, is not a statement that planning, building regulations or other relevant sent has been obtained