

Townsend Close, Bracknell, RG12 0XE

£1,050 Per Month



Available 16th September 2024

Luff Associates are proud to offer this modern first floor apartment set in a quiet cul-de-sac, close to Martins Heron railway station and only a short walk to Savernake Park.

The property comprises of a living/dining room, fitted kitchen, bath with shower above a double bedroom.

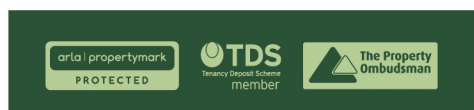
In addition to communal gardens there is an allocated parking space and ample visitor parking.

EPC ordered.

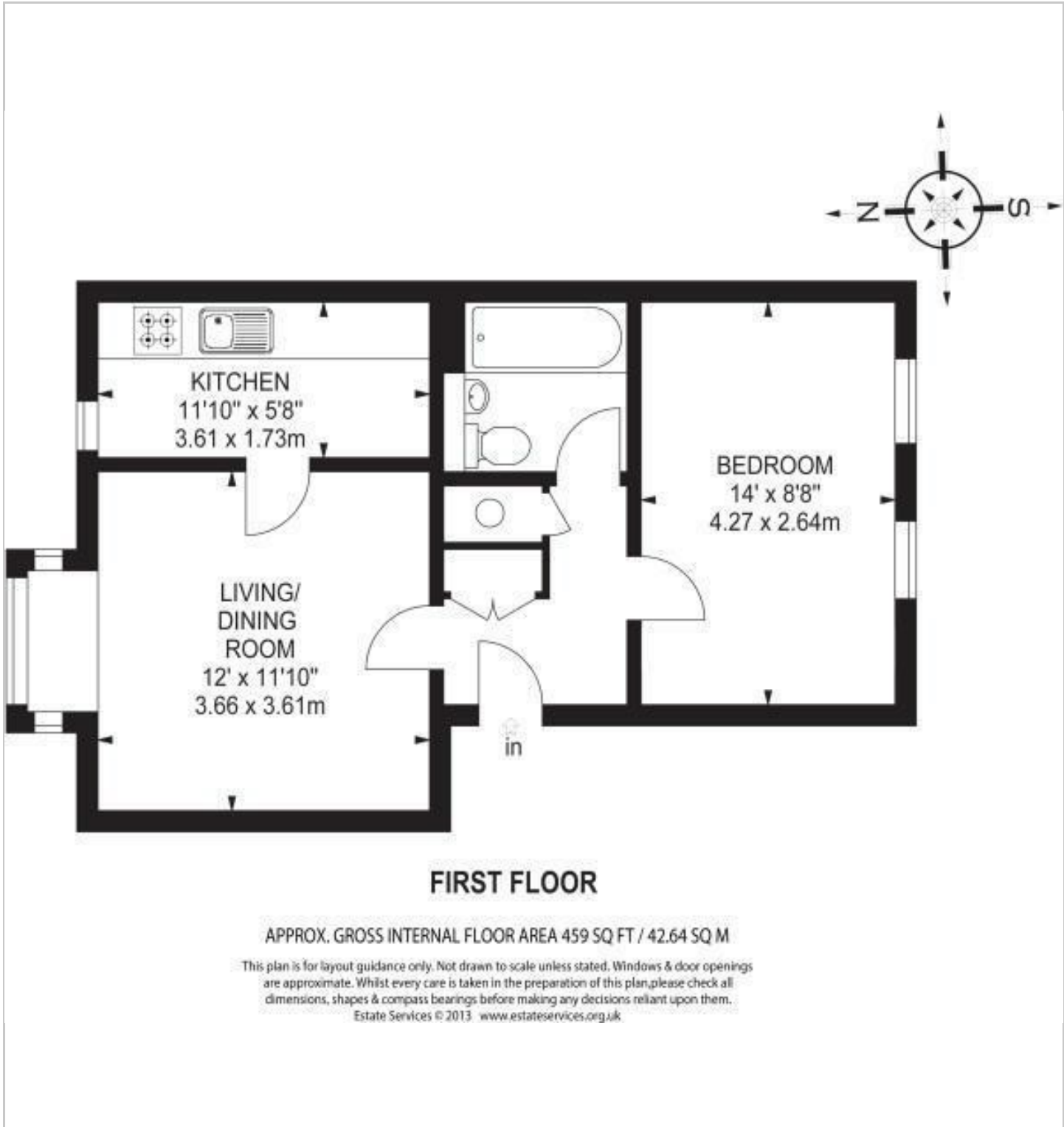
Available Unfurnished

Council Tax band B £1606.90pa

Disclaimer; Council tax charges change annually



1a Guildford Road, Frimley Green, Camberley, Surrey, GU16 6NL
Tel: 01252 834949 admin@luff-associates.com www.luff-associates.com



Energy Efficiency Rating		Current	Potential
Very energy efficient - lower running costs	(92 plus) A		
(81-91) B			
(69-80) C			
(55-68) D			
(39-54) E			
(21-38) F			
(1-20) G			
Not energy efficient - higher running costs			
England & Wales		EU Directive 2002/91/EC	

Environmental Impact (CO ₂) Rating		Current	Potential
Very environmentally friendly - lower CO ₂ emissions	(92 plus) A		
(81-91) B			
(69-80) C			
(55-68) D			
(39-54) E			
(21-38) F			
(1-20) G			
Not environmentally friendly - higher CO ₂ emissions			
England & Wales		EU Directive 2002/91/EC	



Disclaimer: The Rent advertised does not include the Tenancy Deposit or any fee's or charges which are payable. Further information can be obtained from the agent or at the point of viewing. These details have been prepared and issued in good faith and do not constitute representations of fact or form part of any offer or contract Luff Associates Ltd have not carried out a structural survey of the property, nor have we tested any of the services or appliances. All measurements are intended to be approximate only and all photographs show parts of the property as they were at the time they were taken. Any reference to alterations or particular use of the property wherever stated, is not a statement that planning, building regulations or other relevant sent has been obtained