

Rosebay Crescent,
Warfield, Bracknell, RG42 5AL

£2,000 Per Month



*** Available 2nd September 2024***

Luff Associates are proud to offer this spacious three bedroom property situated on the new Woodhurst Park development in Warfield. Located 1.2 miles from Bracknell Station, Martins Heron station 2.1 miles, Wokingham station 3.9 miles.

Hallway with storage cupboard, cloakroom, lounge/diner with open plan kitchen and utility room. Doors leading out to south facing enclosed rear garden.

Three double bedrooms, family bathroom and en-suite. Presented well throughout, benefiting from two off road parking spaces.

Unfurnished

Regret No Pets

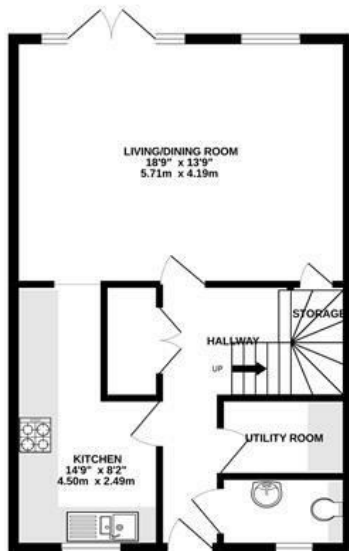
Council tax band D £2016.48pa

Disclaimer; Council tax charge may change yearly

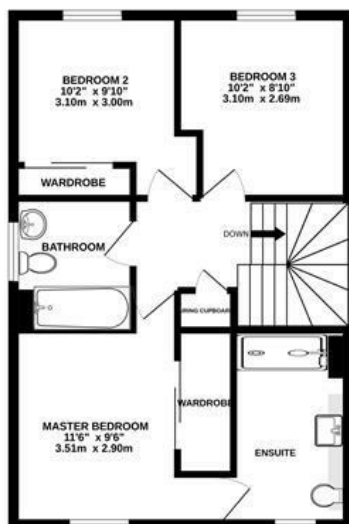


1a Guildford Road, Frimley Green, Camberley, Surrey, GU16 6NL
Tel: 01252 834949 admin@luff-associates.com www.luff-associates.com

GROUND FLOOR
534 sq. ft. (49.6 sq.m.) approx.

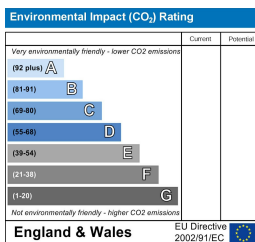
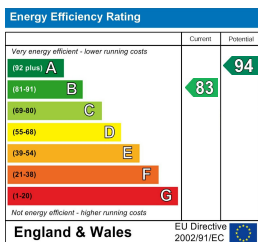


1ST FLOOR
530 sq. ft. (49.3 sq.m.) approx.



TOTAL FLOOR AREA : 1064 sq.ft. (98.9 sq.m.) approx.

Whilst every attempt has been made to ensure the accuracy of the floorplan contained here, measurements of doors, windows, rooms and any other items are approximate and no responsibility is taken for any error, omission or mis-statement. This plan is for illustrative purposes only and should be used as such by any prospective purchaser. The services, systems and appliances shown have not been tested and no guarantee as to their operability or efficiency can be given.
Made with Metropix ©2022



In partnership with
LUFF & WILKIN
sales 01252 838 899

Disclaimer: The Rent advertised does not include the Tenancy Deposit or any fee's or charges which are payable. Further information can be obtained from the agent or at the point of viewing. These details have been prepared and issued in good faith and do not constitute representations of fact or form part of any offer or contract Luff Associates Ltd have not carried out a structural survey of the property, nor have we tested any of the services or appliances. All measurements are intended to be approximate only and all photographs show parts of the property as they were at the time they were taken. Any reference to alterations or particular use of the property wherever stated, is not a statement that planning, building regulations or other relevant sent has been obtained