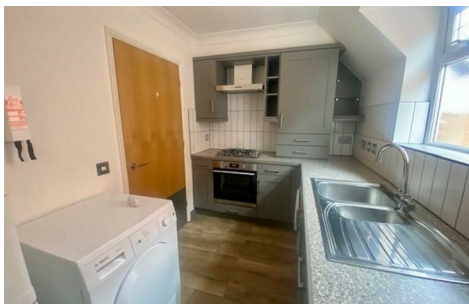


Elands Court,
Park Road, Camberley, GU15 2SP

£1,050 PCM



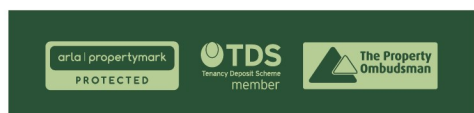
Available Immediately

Situated in a prime position for access to Camberley town centre and British Rail mainline station, this one bedroom top floor apartment is set in a select block of just eight apartments.

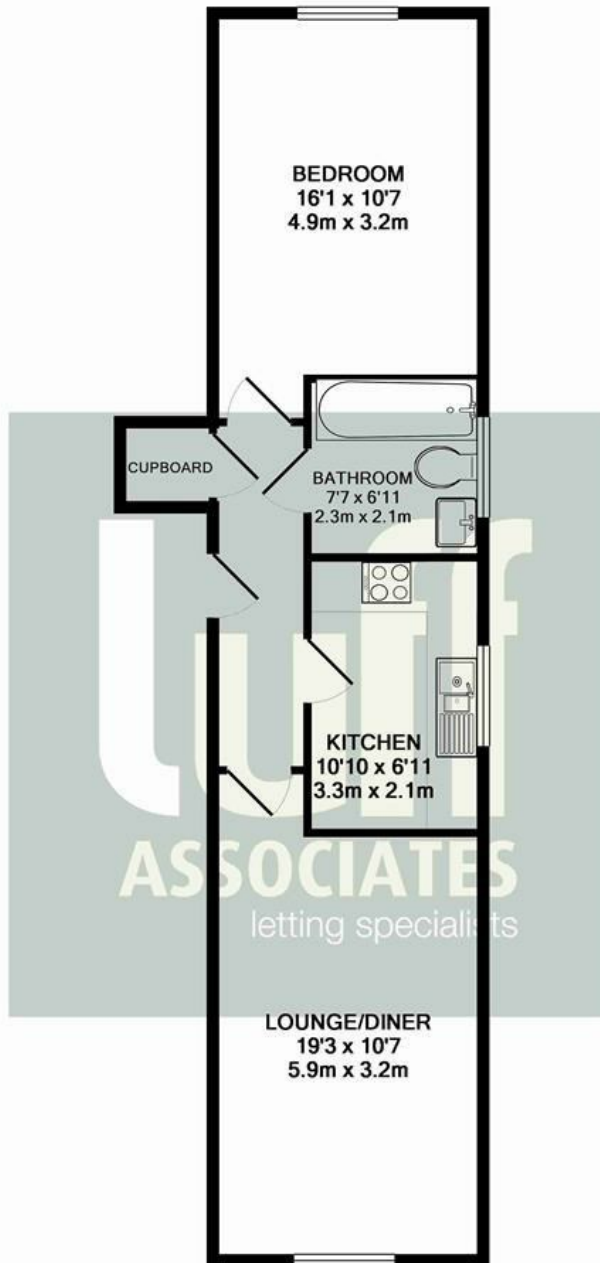
The accommodation comprises of a hallway leading to the lounge/diner, fitted kitchen with appliances, good size double bedroom and bathroom with walk in shower.

Externally there is an allocated parking space

Unfurnished
Regret No Pets
Council Tax Band C: £2078.05pa
Disclaimer: Council Tax Charges change annually



1a Guildford Road, Frimley Green, Camberley, Surrey, GU16 6NL
Tel: 01252 834949 admin@luff-associates.com www.luff-associates.com



TOTAL APPROX. FLOOR AREA 532 SQ.FT. (49.4 SQ.M.)

Whilst every attempt has been made to ensure the accuracy of the floor plan contained here, measurements of doors, windows, rooms and any other items are approximate and no responsibility is taken for any error, omission, or mis-statement. This plan is for illustrative purposes only and should be used as such by any prospective purchaser. The services, systems and appliances shown have not been tested and no guarantee as to their operability or efficiency can be given
 Made with Metropix ©2015

Energy Efficiency Rating		Current	Potential
Very energy efficient - lower running costs			
(92 plus) A		81	81
(81-91) B			
(69-80) C			
(55-68) D			
(39-54) E			
(21-38) F			
(1-20) G			
Not energy efficient - higher running costs			
England & Wales		EU Directive 2002/91/EC	

Environmental Impact (CO ₂) Rating		Current	Potential
Very environmentally friendly - lower CO ₂ emissions			
(92 plus) A			
(81-91) B			
(69-80) C			
(55-68) D			
(39-54) E			
(21-38) F			
(1-20) G			
Not environmentally friendly - higher CO ₂ emissions			
England & Wales		EU Directive 2002/91/EC	



In partnership with
LUFF & WILKIN
 sales 01252 838 899

Disclaimer: The Rent advertised does not include the Tenancy Deposit or any fee's or charges which are payable. Further information can be obtained from the agent or at the point of viewing. These details have been prepared and issued in good faith and do not constitute representations of fact or form part of any offer or contract Luff Associates Ltd have not carried out a structural survey of the property, nor have we tested any of the services or appliances. All measurements are intended to be approximate only and all photographs show parts of the property as they were at the time they were taken. Any reference to alterations or particular use of the property wherever stated, is not a statement that planning, building regulations or other relevant sent has been obtained