

Swaledale Gardens,
Fleet, Hants, GU51 2TE

£950 PCM



Available Immediately

A one bedroom, second floor apartment located on the popular Ancells Farm development in Fleet within half a mile of Fleet mainline railway station and with a mile and a half of the town centre. Within easy access to M3 motorway. Walking distance to local shops, Post Office, Falkners Arms Public House and Ancells Farm Park.

The accommodation comprises of an entrance hall, a spacious lounge, a fitted kitchen, a double bedroom and the bathroom. The property also offers resident's parking.

The property is having new carpet fitted throughout.

Unfurnished.

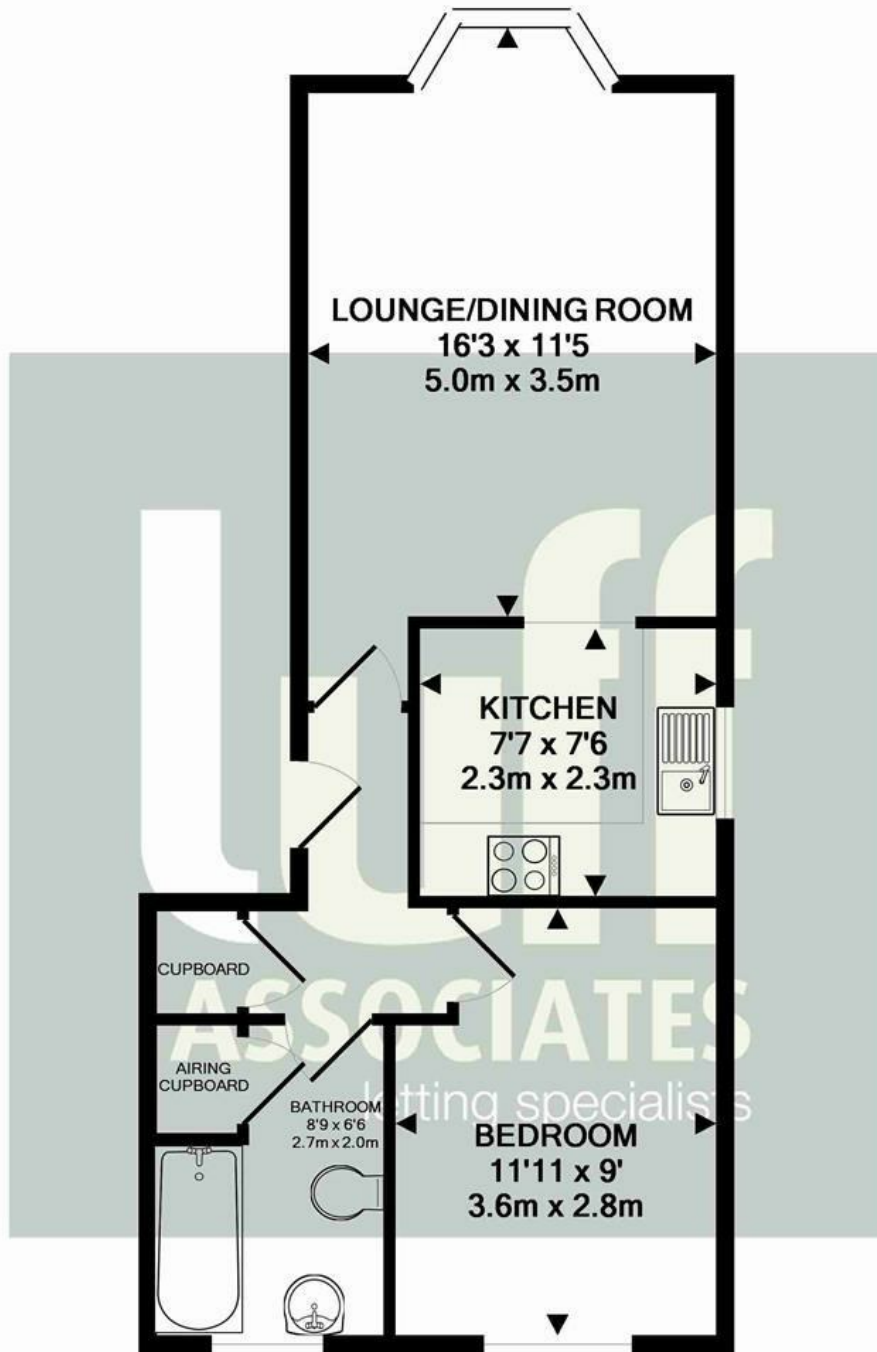
Regret No pets.

Council Tax Band B - £1710.82pa

Disclaimer: Council tax charges may change yearly



1a Guildford Road, Frimley Green, Camberley, Surrey, GU16 6NL
Tel: 01252 834949 admin@luff-associates.com www.luff-associates.com



Energy Efficiency Rating		Current	Potential
Very energy efficient - lower running costs			
(92 plus) A			
(81-91) B			
(69-80) C			
(55-68) D			
(39-54) E			
(21-38) F			
(1-20) G			
Not energy efficient - higher running costs			
England & Wales		69	76
	EU Directive 2002/91/EC		

Environmental Impact (CO ₂) Rating		Current	Potential
Very environmentally friendly - lower CO ₂ emissions			
(92 plus) A			
(81-91) B			
(69-80) C			
(55-68) D			
(39-54) E			
(21-38) F			
(1-20) G			
Not environmentally friendly - higher CO ₂ emissions			
England & Wales			
	EU Directive 2002/91/EC		



In partnership with
LUFF & WILKIN
sales 01252 838 899

Disclaimer: The Rent advertised does not include the Tenancy Deposit or any fee's or charges which are payable. Further information can be obtained from the agent or at the point of viewing. These details have been prepared and issued in good faith and do not constitute representations of fact or form part of any offer or contract Luff Associates Ltd have not carried out a structural survey of the property, nor have we tested any of the services or appliances. All measurements are intended to be approximate only and all photographs show parts of the property as they were at the time they were taken. Any reference to alterations or particular use of the property wherever stated, is not a statement that planning, building regulations or other relevant sent has been obtained