



- Three bedrooms
- Spacious kitchen/dining room
- Garden to rear
- popular location

## Moffat Road, Thornton Heath, CR7 8PX

Spacious three bedroom property with two large bedrooms and bathroom to the first floor, a further bedroom to the ground floor and a living room, plus spacious kitchen/dining room. Available now. There is a garden to the rear. Call us now to view. EPC Rating D. Tax Band D.

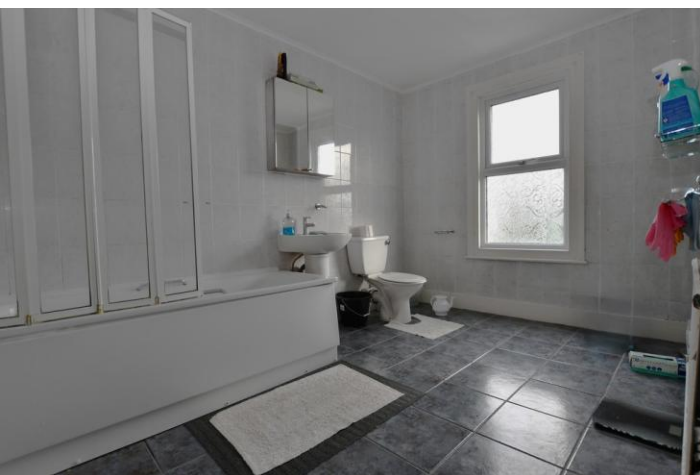
**£2,300 pcm**



## Property Description

Spacious three bedroom property with two large bedrooms and bathroom to the first floor, a further bedroom to the ground floor and a living room, plus spacious kitchen/dining room. Available now. There is a garden to the rear. Call us now to view.

EPC Rating D. Tax Band D.





Score	Energy rating	Current	Potential
92+	A		
81-91	B		87 B
69-80	C		
55-68	D	68 D	
39-54	E		
21-38	F		
1-20	G		

%epcGraph\_c\_1\_334%

49 Lower Addiscombe Road,  
Croydon, Surrey, CR0 6PQ

[www.bensonpartners.co.uk](http://www.bensonpartners.co.uk)  
[eastcroydon@bensonpartners.co.uk](mailto:eastcroydon@bensonpartners.co.uk)  
02086863335

Agents Note: Whilst every care has been taken to prepare these sales particulars, they are for guidance purposes only. All measurements are approximate and are for general guidance purposes only and whilst every care has been taken to ensure their accuracy, they should not be relied upon and potential buyers are advised to recheck the measurements.