



- Two bedrooms
- Modern throughout
- Living room
-

London Road, London, SW16 4EY

PRICED TO SELL! Compare others! This STUNNING two bedroom apartment with en-suite, roof terrace and access to private gym would make a super first time buy or buy to let investment. Prime position, MUST BE SEEN! There is 24 HOUR CONCIERGE which provides superb security etc.... modern throughout and situated in a highly prominent central position with parking. These apartments are always in demand and this will be no exception. Call us now to view! NO FORWARD CHAIN!

EPC Rating C. Tax Band C.

Offers In Region Of £289,000



Property Description

PRICED TO SELL! Compare others! This STUNNING two bedroom apartment with en-suite, roof terrace and access to private gym would make a super first time buy or buy to let investment. Prime position, MUST BE SEEN! There is 24 HOUR CONCIERGE which provides superb security etc.... modern throughout and situated in a highly prominent central position with parking. These apartments are always in demand and this will be no exception. Call us now to view! NO FORWARD CHAIN! EPC Rating C. Tax Band C.

LEASE 125 years from 1 January 2001.

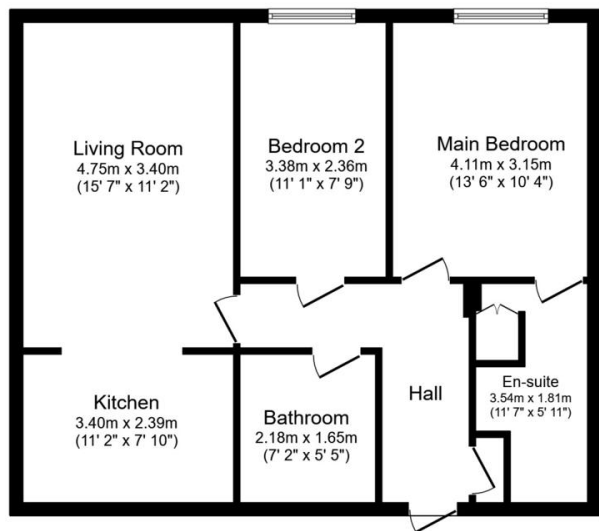
SERVICE CHARGE £3,457.36 for 2023

GROUND RENT £200 PA.





Score	Energy rating	Current	Potential
92+	A		
81-91	B		
69-80	C	76 C	76 C
55-68	D		
39-54	E		
21-38	F		
1-20	G		



Floor Plan

Total floor area 70.6 sq.m. (760 sq.ft.) approx

This plan is for illustration purposes only and may not be representative of the property. Plan not to scale. Powered by PropertyBox

%epcGraph_c_1_334%

49 Lower Addiscombe Road,
Croydon, Surrey, CR0 6PQ

www.bensonpartners.co.uk
02086670121
eastcroydon@bensonpartners.co.uk

Agents Note: Whilst every care has been taken to prepare these sales particulars, they are for guidance purposes only. All measurements are approximate and are for general guidance purposes only and whilst every care has been taken to ensure their accuracy, they should not be relied upon and potential buyers are advised to recheck the measurements