



- Two bedrooms
- Ground floor
- prime location for station
- Central position

Ashburton Road, Croydon, CR0 6AQ

Well presented and located in one of the areas sought after locations for the station is this superb two bedroom ground floor apartment. The property is well presented throughout and has a modern kitchen and bathroom/wc. Available with no forward chain so could be a quick purchase for First time buyers! Garage en-bloc and well kept grounds. Call us today to view as keys are held. EPC Rating D. Tax Band C.

Asking Price Of £279,995



Property Description

Well presented and located in one of the areas sought after locations for the station is this superb two bedroom ground floor apartment. The property is well presented throughout and has a modern kitchen and bathroom/wc. Available with no forward chain so could be a quick purchase for First time buyers! Garage en-bloc and well kept grounds. Call us today to view as keys are held. EPC Rating D. Tax Band C.

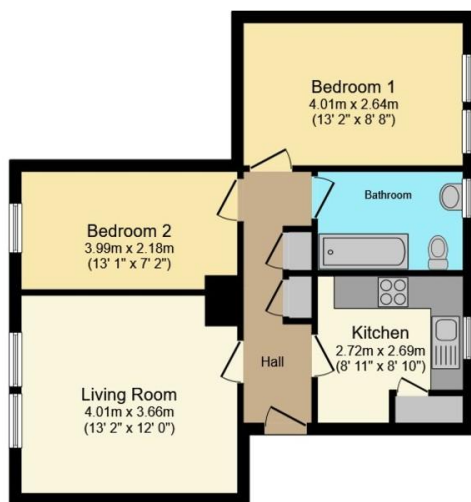
LEASE 163 years.

SERVICE CHARGE £50 PCM.

GROUND RENT N/A.







Floor Plan
Floor area 54.2 m² (584 sq.ft.)

TOTAL: 54.2 m² (584 sq.ft.)

This floor plan is for illustrative purposes only. It is not drawn to scale. Any measurements, floor areas (including any total floor area), openings and orientations are approximate. No details are guaranteed, they cannot be relied upon for any purpose and do not form any part of any agreement. No liability is taken for any error, omission or misstatement. A party must rely upon its own inspection(s). Powered by www.Propertybox.io

%epcGraph_c_1_334%

49 Lower Addiscombe Road,
Croydon, Surrey, CR0 6PQ

www.bensonpartners.co.uk
02086670121
eastcroydon@bensonpartners.co.uk

Agents Note: Whilst every care has been taken to prepare these sales particulars, they are for guidance purposes only. All measurements are approximate and are for general guidance purposes only and whilst every care has been taken to ensure their accuracy, they should not be relied upon and potential buyers are advised to recheck the measurements