



- Three bedrooms
- Extended Kitchen/breakfast room
- Lawned and decked garden
- Upstairs bathroom/wc

Lower Addiscombe Road, Croydon, CR0 7AF

Extended and spacious three bedroom family home near East Croydon station, large extended kitchen breakfast room, study room, dining room and separate living room. There is a lovely rear garden with decking and access. This has to be viewed to be appreciated! Call us now if you are looking for a spacious home in a great central position!

EPC Rating TBC. Tax Band D.

Asking Price Of £499,995

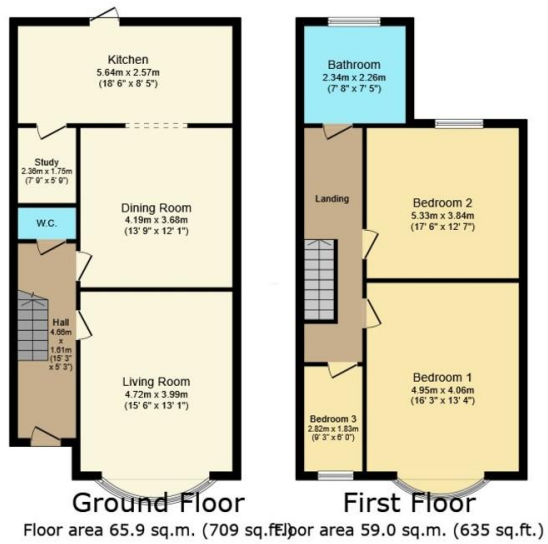


Property Description

Extended and spacious three bedroom family home near East Croydon station, large extended kitchen breakfast room, study room, dining room and seprate living room. There is a lovely rear garden with decking and access. This has to be viewed to be appreciated! Call us now if you are looking for a spacious home in a great central position!
EPC Rating TBC. Tax Band D.







TOTAL: 124.9 sq.m. (1,344 sq.ft.)

This floor plan is for illustrative purposes only. It is not drawn to scale. Any measurements, floor areas (including any total floor area), openings and orientations are approximate. No details are guaranteed, they cannot be relied upon for any purpose and do not form any part of any agreement. No liability is taken for any error, omission or misstatement. A party must rely upon its own inspection(s). Powered by www.Propertybox.io

%epcGraph_c_1_334%

49 Lower Addiscombe Road,
Croydon, Surrey, CR0 6PQ

www.bensonpartners.co.uk
02086670121
eastcroydon@bensonpartners.co.uk

Agents Note: Whilst every care has been taken to prepare these sales particulars, they are for guidance purposes only. All measurements are approximate and are for general guidance purposes only and whilst every care has been taken to ensure their accuracy, they should not be relied upon and potential buyers are advised to recheck the measurements