



- Two double bedrooms
- Gas central heating
- Double glazing
- Off street parking

Steep Hill, Croydon, CR0 5QU

This is stunning, spacious and must be seen! The property is situated on the highly sought after Steephill which is in demand as close to East Croydon station and amenities. Ground floor, with own outside space and access to a private swimming residents swimming pool on the site. There is private parking too. This is one not to miss out on and must be top of your viewing list.

Offers In Excess Of £309,995



Property Description

ENTRANCE HALL 9' 61" x 14' 10" (4.29m x 4.52m)

LIVING ROOM 12' 14" x 16' 67" (4.01m x 6.58m)

KITCHEN 9' 24" x 13' 16" (3.35m x 4.37m)

BEDROOM 1 12' 0" x 9' 88" (3.66m x 4.98m)

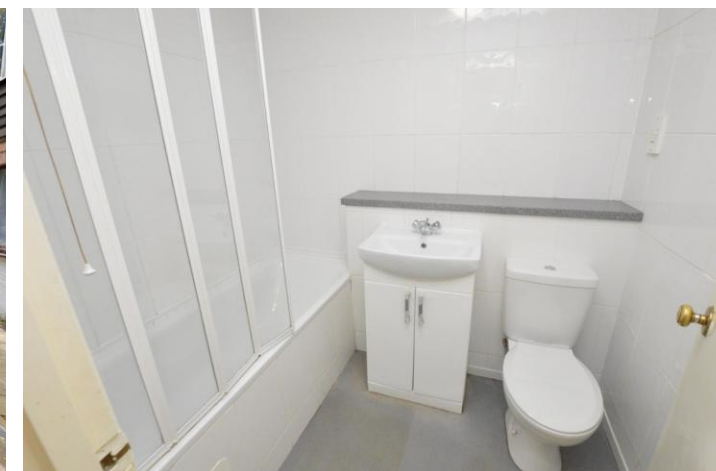
BEDROOM 2 12' 0" x 7' 16" (3.66m x 2.54m)

BATHROOM 5' 91" x 6' 88" (3.84m x 4.06m)

LEASE 150 years from 24 June 1984.

SERVICE CHARGE £493.00 per quarter.

GROUND RENT N/A.







Floor Plan

Floor area 64.1 sq.m. (690 sq.ft.) approx

Total floor area 64.1 sq.m. (690 sq.ft.) approx

This plan is for illustration purposes only and may not be representative of the property. Plan not to scale.

%epcGraph_c_1_334%

49 Lower Addiscombe Road,
Croydon, Surrey, CR0 6PQ

www.bensonpartners.co.uk
02086670121
eastcroydon@bensonpartners.co.uk

Agents Note: Whilst every care has been taken to prepare these sales particulars, they are for guidance purposes only. All measurements are approximate are for general guidance purposes only and whilst every care has been taken to ensure their accuracy, they should not be relied upon and potential buyers are advised to recheck the measurements