



- 3 bedroom
- Semi detached
- Newly refurbished
- Close transport links

Sydenham Road, Croydon, CR0 2ET

Well presented and spacious three bedroom family home which is ready to move into. There is three bedrooms and bathroom/wc to the first floor, spacious living and dining room and kitchen as well as large utility room and bonus loft/games room! This is an exceptional home that must be viewed to be appreciated. Located near both East and West Croydon stations, local transport links, shops, schools and other amenities.

EPC Rating D. Tax Band D.

Asking Price Of £450,000

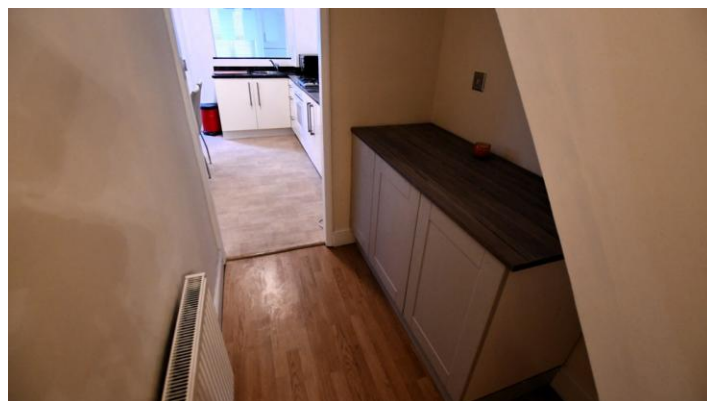
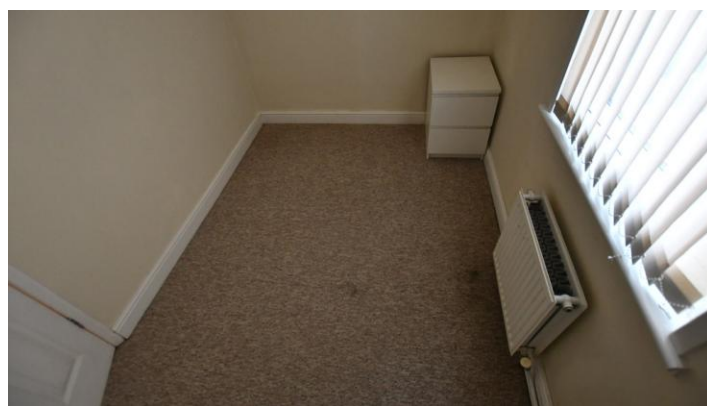


Property Description

Benson and Partners are delighted to offer for sale this high quality newly refurbished 3 bedroom semi detached house. Includes loft room suitable as office, study or playroom, reception and garden. Located near both East and West Croydon stations, local transport links, shops, schools and other amenities.

EPC Rating D. Tax Band D.







Total floor area 112.8 sq.m. (1,214 sq.ft.) approx
 This plan is for illustration purposes only and may not be representative of the property. Plan not to scale.

%epcGraph_c_1_334%

49 Lower Addiscombe Road,
 Croydon, Surrey, CR0 6PQ

www.bensonpartners.co.uk
 02086670121
 eastcroydon@bensonpartners.co.uk

Agents Note: Whilst every care has been taken to prepare these sales particulars, they are for guidance purposes only. All measurements are approximate are for general guidance purposes only and whilst every care has been taken to ensure their accuracy, they should not be relied upon and potential buyers are advised to recheck the measurements