

- Two-bedroom
- Modern fitted kitchen
- Summer House
- Chain Free

## Alexandra road , Croydon, CR0 6PQ

Available for sale now is this well presented end of terrace two-bedroom house on Alexandra Road. Includes two spacious bedrooms, modern fitted kitchen, bathroom suite, roomy reception room, downstairs shower room and office that offers direct access onto well maintained garden with a garden office which boasts full power and is hardwired to the internet. Located close to East Croydon Station, transport links, shops and other amenities. Sold chain free and having the scope to extend (STPP). EPC Rating D. Tax Band C.

**Offers In Excess Of £430,000**



## Property Description

Available for sale now is this well presented end of terrace two-bedroom house on Alexandra Road. Includes two spacious bedrooms, modern fitted kitchen, bathroom suite, roomy reception room, downstairs shower room and office that offers direct access onto well maintained garden with a garden office which boasts full power and is hardwired to the internet. Located close to East Croydon Station, transport links, shops and other amenities. Sold chain free and having the scope to extend (STPP).  
EPC Rating D. Tax Band C.



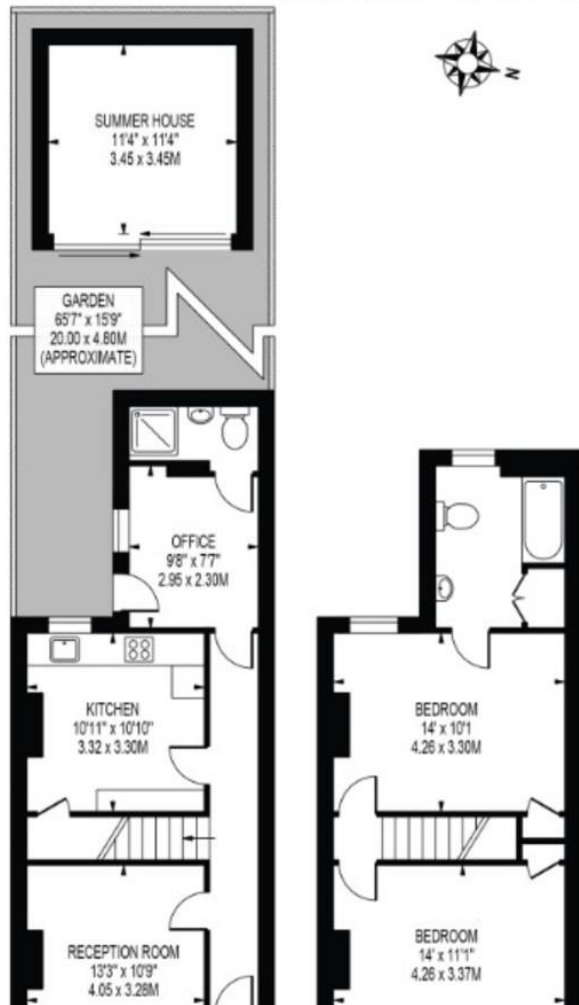


## ALEXANDRA ROAD

APPROXIMATE GROSS INTERNAL FLOOR AREA: 910 SQ FT - 84.55 SQ M

(EXCLUDING SUMMER HOUSE)

APPROXIMATE GROSS INTERNAL AREA OF SUMMER HOUSE: 128 SQ FT - 11.90 SQ M



%epcGraph\_c\_1\_334%

49 Lower Addiscombe Road,  
Croydon, Surrey, CR0 6PQ

[www.bensonpartners.co.uk](http://www.bensonpartners.co.uk)  
02086670121  
[eastcroydon@bensonpartners.co.uk](mailto:eastcroydon@bensonpartners.co.uk)

Agents Note: Whilst every care has been taken to prepare these sales particulars, they are for guidance purposes only. All measurements are approximate and for general guidance purposes only and whilst every care has been taken to ensure their accuracy, they should not be relied upon and potential buyers are advised to recheck the measurements