

# David Doyle



**19 Richardson House  
Nash Mills Wharf  
HP3 9GA**

01442 248671 [www.daviddoyle.co.uk](http://www.daviddoyle.co.uk) [boxmoor@daviddoyle.co.uk](mailto:boxmoor@daviddoyle.co.uk)

**OIRO £315,000** Leasehold



This spacious and well presented 2 double bedroom apartment is located on this sought after modern canal side development and offer access to both Kings Langley and Hemel Hempstead. The property is conveniently located for local shops, schools, Long Deans Nature Reserve, the Grand Union Canal and Apsley main line station with links to London Euston. The canal is a beautiful way to explore the local area and the towpath offers access to Apsley Lock Marina, through to Hemel Hempstead and in the other direct to Kings Langley. The apartment has one of the larger Lounge Kitchen Dining areas compared to similar apartments and has a balcony for outside entertaining that overlooks a stream and play park. The family bathroom benefits from having both a bath and shower cubicle and is finished to a high standard in white with chrome fittings. The property has allocated parking and benefits from the well kept communal gardens.

VIEWING IS HIGHLY RECOMMENDED.

Nash Mills is a favoured residential area with a selection of shops and other amenities. Not so far from beautiful open countryside it is convenient for the mainline railway station (serving London Euston) and the M1/M25 access points.

Spacious two bedroom apartment

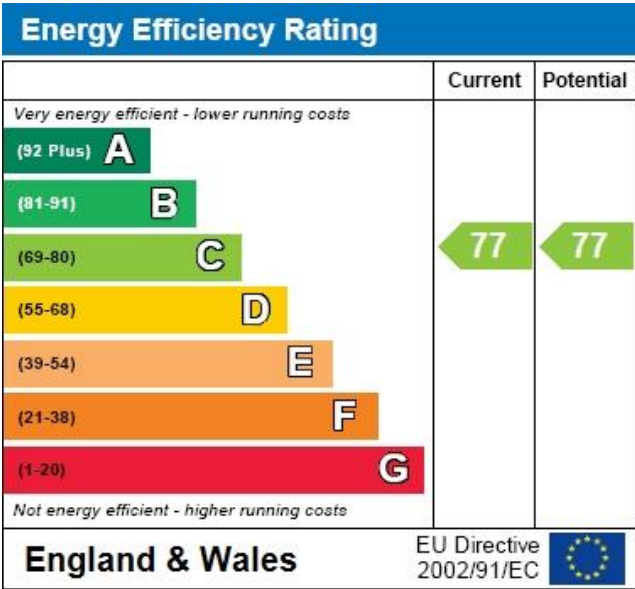
Allocated parking

Balcony

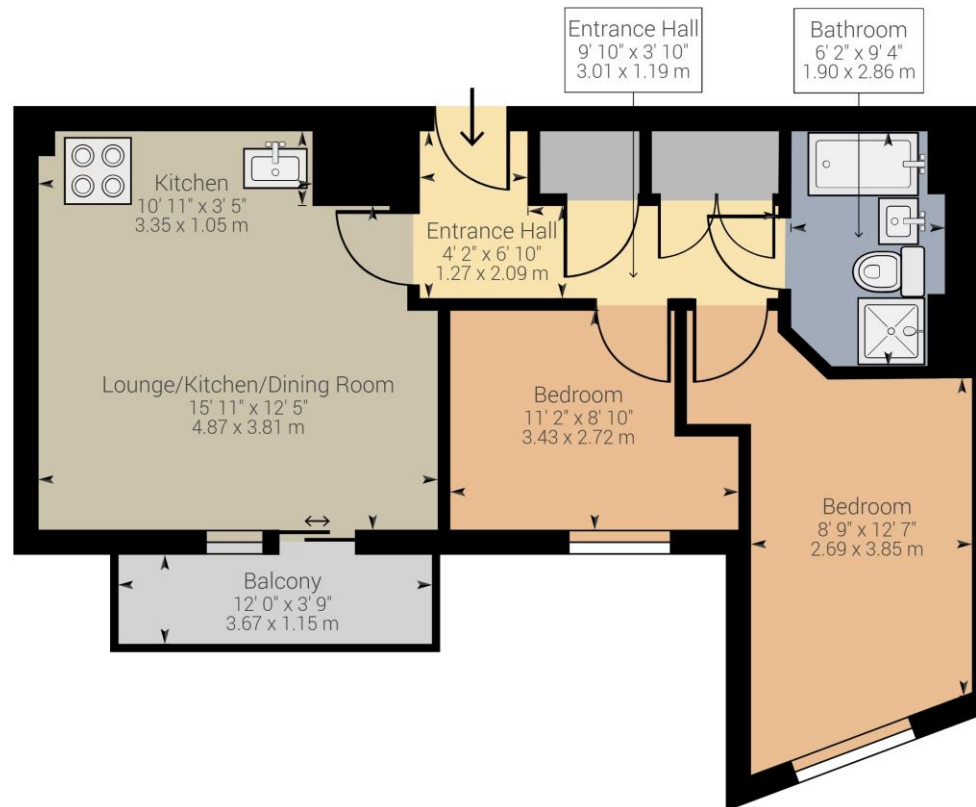
Bathroom with shower and bath

Fitted kitchen with appliances

Open plan lounge dining area



Call **01442 248671** to arrange a viewing or register an interest



Approximate net internal area: 625.58 ft<sup>2</sup> (671.05 ft<sup>2</sup>) / 58.12 m<sup>2</sup> (62.34 m<sup>2</sup>)  
While every attempt has been made to ensure accuracy, all measurements are approximate, not to scale. This floor plan is for illustrative purpose only and should be used as such by any prospective tenant or purchaser.

Powered by Giraffe360

**19 Richardson House**  
**Nash Mills Wharf**  
**HP3 9GA**



**Boxmoor Office**  
45 St Johns Road  
Boxmoor  
Hemel Hempstead  
Herts, HP1 1QQ  
01442 248671