

David Doyle

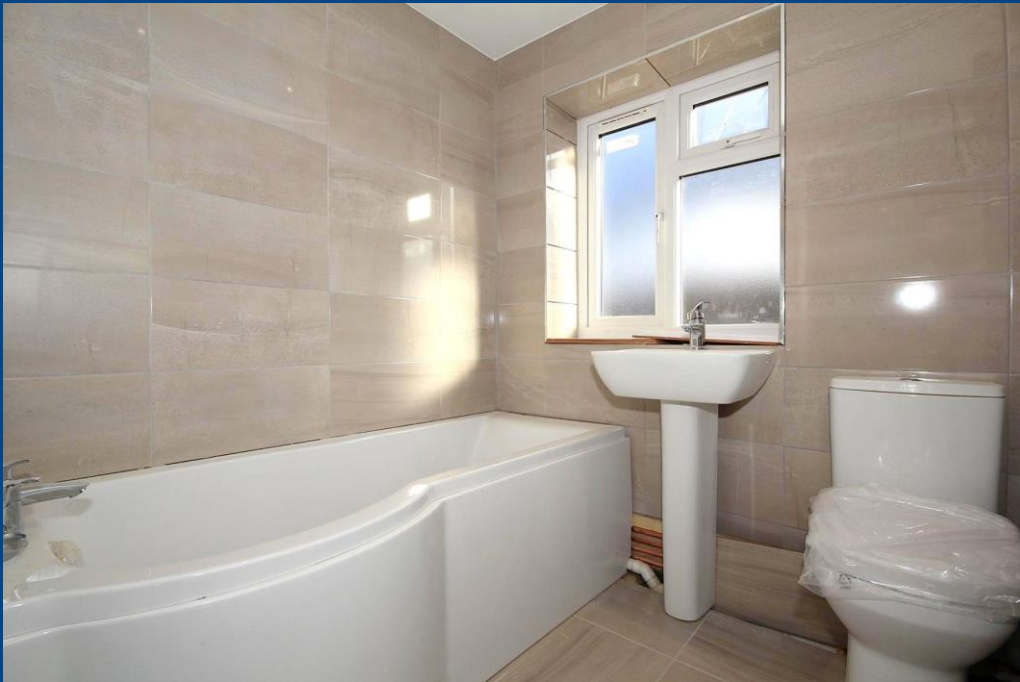
 **MAYFAIR**
OFFICE.CO.UK



**New Ground Floor
Maisonette, 64 Turners
Hill, Hemel Hempstead,
Hertfordshire, HP2 4LH**

01442 248671 www.daviddoyle.co.uk boxmoor@daviddoyle.co.uk

Guide Price £275,000 Leasehold



New Ground Floor Maisonette

64 Turners Hill

Hemel Hempstead

Hertfordshire, HP2 4LH

Front door to:-

ENTRANCE HALL

Doors to:-

LOUNGE / KITCHEN DINING ROOM

Dual aspect with double glazed bay window to front and double glazed window to side aspect.

BEDROOM 1

Pair of double glazed French doors opening on to the rear garden.

BEDROOM 2

Double glazed window to rear aspect.

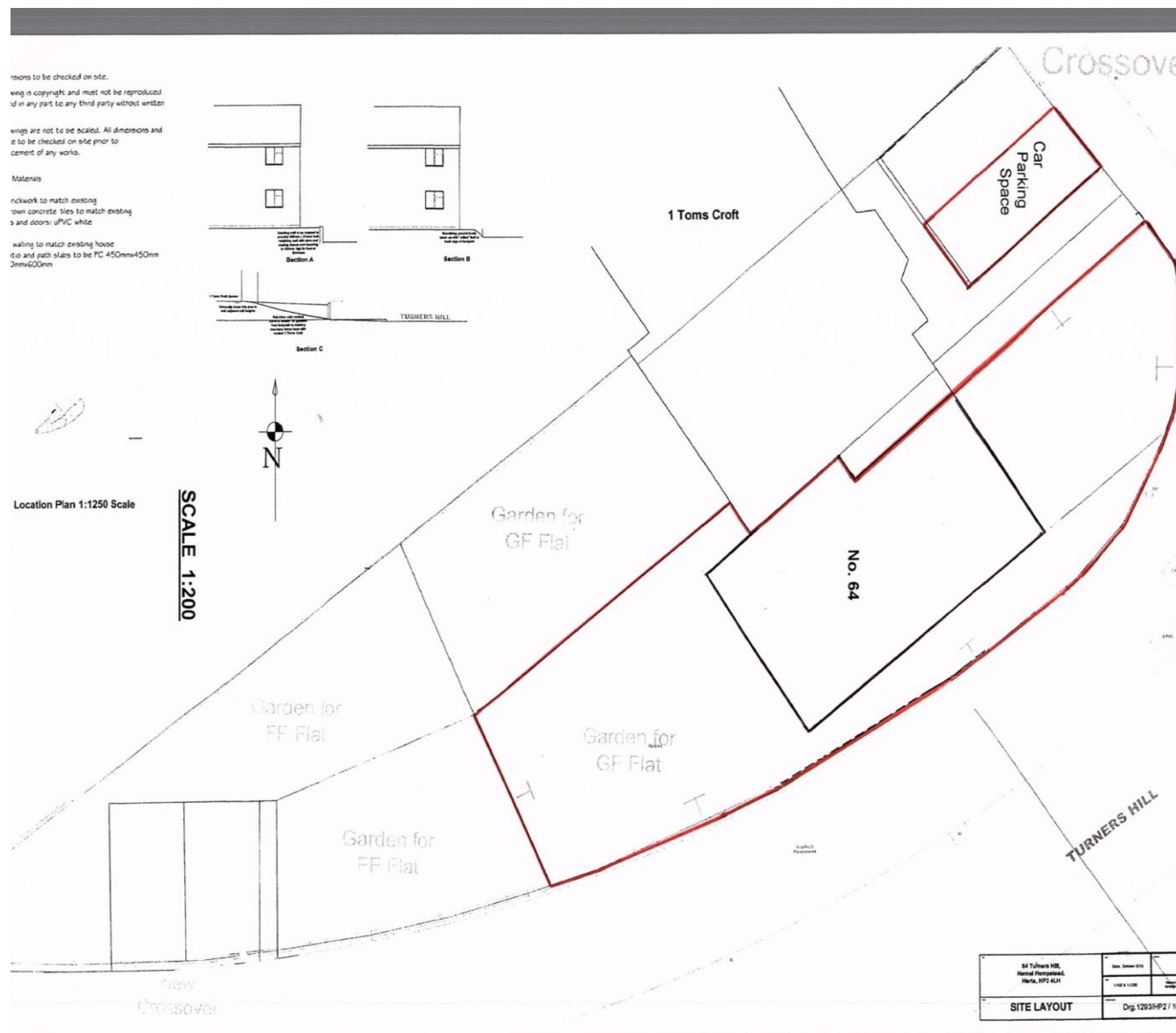
BATHROOM

Fitted in white with chrome fittings.

OUTSIDE

ALLOCATED PARKING

REAR GARDEN



David
Doyle

David Doyle Estate Agents (DD), for themselves and for the vendors of this property whose agents they are, give notice that: (1) These particulars and floorplans are set out as a general outline only for the guidance of the intending purchasers and do not constitute the whole, nor any part, of an offer or contract. (2) All descriptions, dimensions, floorplan dimensions, references to condition, necessary permissions for use and occupation, and any other details, are given in good faith and are believed to be correct at the date of compilation, but any intending purchasers should not rely on them as statements or representation of fact and must satisfy themselves as to their accuracy. (3) All plant, machinery, equipment, services, fixtures and fittings referred to were present at the date of first inspection, but have not been tested and we give no warranty or representation as to their condition, operation, or fitness for the intended purpose. (4) Any comment on council tax/rateable value, rates payable, and permitted planning use, is given in good faith from information informally supplied to us. Intending purchasers must seek confirmation direct from the relevant Local Authority. (5) No person employed by (DD) has any authority to enter into any contract, nor make or give any warranty or representation whatsoever in relation to this property. (6) (DD) do not hold themselves responsible, in negligence or otherwise, for any loss arising from the use of these particulars, nor for any expense incurred in viewing the premises or for abortive journeys. (7) All prices are exclusive of VAT (unless otherwise stated). Terms quoted are subject to contract. NB. PLEASE NOTE that some developments are subject to management company conditions and charges. Solicitors are to advise of any liability/ies.

 **MAYFAIR**
OFFICE.CO.UK

Call **01442 248671** to arrange a viewing or register an interest



64 Turners Hill - Ground Floor New

APPROX. GROSS INTERNAL FLOOR AREA 506 SQ FT / 47 SQ M.
DAVIDBOX1608-FC. THIS IMAGE IS ILLUSTRATIVE ONLY - NOT TO SCALE. COPYRIGHT: THE IMAGE TAILOR LTD. 2016.

New Ground Floor Maisonette
64 Turners Hill, Hemel Hempstead,
Hertfordshire, HP2 4LH



Boxmoor Office
45 St Johns Road
Boxmoor
Hemel Hempstead
Herts, HP1 1QQ
01442 248671