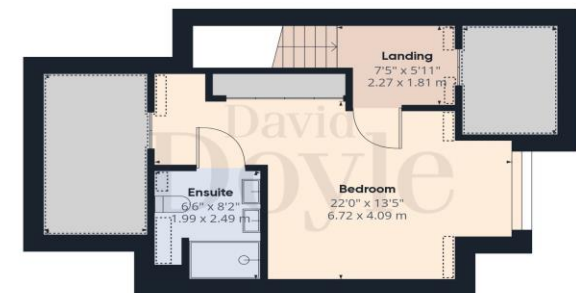
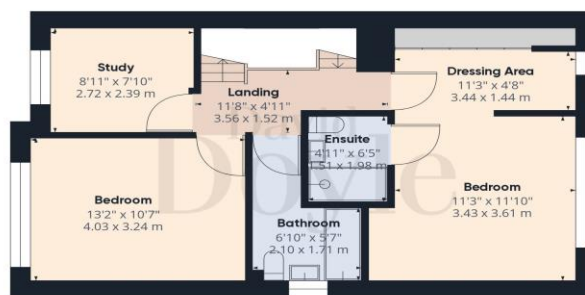
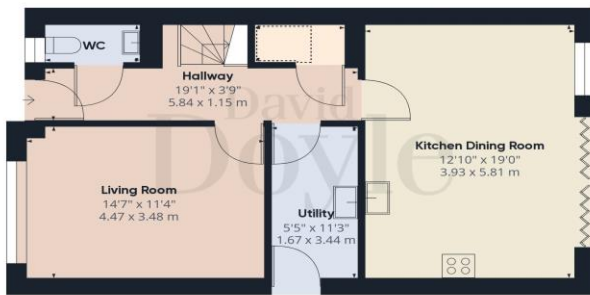


Chesham Road Bovingdon

Offers In Excess of
£700,000
Freehold



Scan for full details



Approximate total area[®]
1677.15 ft²
155.81 m²

Reduced headroom
147.83 ft²
13.73 m²

Excluding balconies and terraces

Reduced headroom
(below 1.5m/4.92ft)

While every attempt has been made to ensure accuracy, all measurements are approximate, not to scale. This floor plan is for illustrative purposes only.

GIRAFFE 360