

57 The Spires, Selden Hill,
Hemel Hempstead,
Hertfordshire, HP2 4FS

David
Doyle
Sales and Lettings

Offers In Excess Of: £245,000 Leasehold



David Doyle are delighted to offer to the sales market this spacious and well presented two double bedroom fifth floor apartment with secure gated undercover allocated parking situated on this modern development conveniently located for local shops, amenities, highly regarded schooling and Hemel Hempstead Mainline Railway Station offering excellent links to London Euston. The property offers over 730 sq ft of accommodation comprising of a generous hallway with security entry phone, storage cupboards and doors to all the rooms including a bright and spacious living/dining room with double glazed French doors opening on to a balcony offering far reaching views and an archway leading to a fitted kitchen arranged with wall and base units, integrated appliances and space and plumbing for white goods. Also accessed from the hallway are two well proportioned double bedrooms, the master with an ensuite shower room and bedroom 2 with a `Juliet` balcony. Finishing the accommodation is the family bathroom, arranged with a white suite and chrome sanitary ware. Having been recently refurbished by the current owners an appointment to view is much advised to appreciate this excellent apartment.

NO UPPER CHAIN with Long Lease.

Hemel Hempstead with its Malls of Riverside and The Marlowes offers a full range of shopping facilities and other amenities. For the commuter, the M1 and M25 are close at hand, whilst the mainline railway station offers a fast and frequent service to London Euston.

Spacious Two Double Bedroom Apartment

Master Bedroom With En Suite & Family Bathroom

Convenient For Local Shops, Amenities & Mainline Railway Station

Lounge/Dining Room With Balcony

Recently Refurbished With New Flooring To Kitchen, Bathrooms & Bedrooms

Security Entry phone

Secure Under Cover Allocated Parking

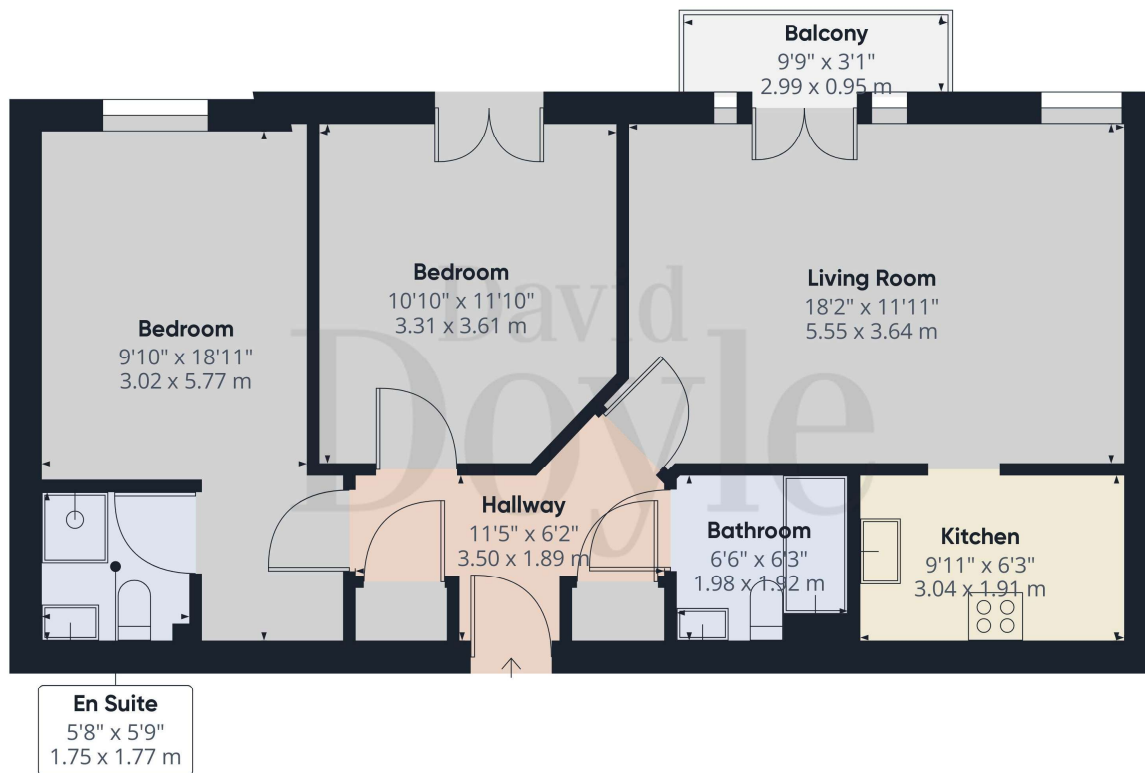
Lift To All Floors

NO UPPER CHAIN

Long Lease

Council Tax Band D

Tenure -Leasehold



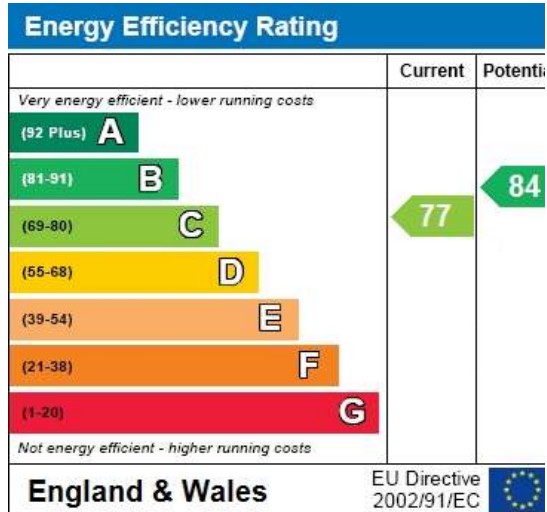
Approximate total area^m
730.88 ft²
67.9 m²

Excluding balconies and terraces

While every attempt has been made to ensure accuracy, all measurements are approximate, not to scale. This floor plan is for illustrative purposes only.

GIRAFFE360

Scan here for more details







CALL 01442 248671 OR EMAIL BOXMOOR@DAVIDDOYLE.CO.UK TO BOOK A VIEWING

David Doyle Estate Agents (DD), for themselves and for the vendors of this property whose agents they are, give notice that: (1) These particulars and floorplans are set out as a general outline only for the guidance of the intending purchasers and do not constitute the whole, nor any part, of an offer or contract. (2) All descriptions, dimensions, floorplan dimensions, references to condition, necessary permissions for use and occupation, and any other details, are given in good faith and are believed to be correct at the date of compilation, but any intending purchasers should not rely on them as statements or representation of fact and must satisfy themselves as to their accuracy. (3) All plant, machinery, equipment, services, fixtures and fittings referred to were present at the date of first inspection, but have not been tested and we give no warranty or representation as to their condition, operation, or fitness for the intended purpose. (4) Any comment on council tax/rateable value, rates payable, and permitted planning use, is given in good faith from information informally supplied to us. Intending purchasers must seek confirmation direct from the relevant Local Authority. (5) No person employed by (DD) has any authority to enter into any contract, nor make or give any warranty or representation whatsoever in relation to this property. (6) (DD) do not hold themselves responsible, in negligence or otherwise, for any loss arising from the use of these particulars, nor for any expense incurred in viewing the premises or for abortive journeys. (7) All prices are exclusive of VAT (unless otherwise stated). Terms quoted are subject to contract. NB. PLEASE NOTE that some developments are subject to management company conditions and charges. Solicitors are to advise of any liability/ies.