

David Doyle

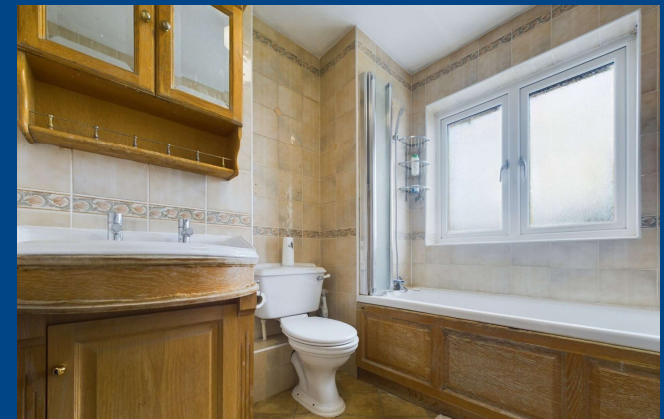
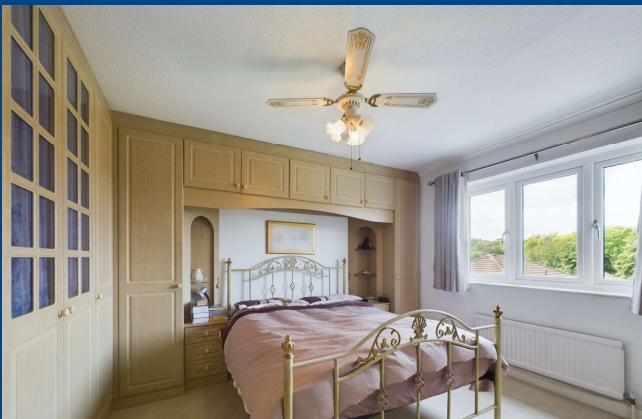
 MAYFAIR
OFFICE.CO.UK



16 Beechwood Park
Felden
HP3 0DY

01442 248671 www.daviddoyle.co.uk boxmoor@daviddoyle.co.uk

Offers Over £1,000,000



David Doyle are delighted to offer to the sales market this rarely available four double bedroom executive detached property with double garage situated on the exclusive Beechwood Park Estate close to beautiful woodland and within easy access to Bovington, Boxmoor and Berkhamsted. The property sits on a generous plot, has been extended by the current owners yet offers scope for further development subject to the necessary planning consents. Internally the accommodation is well arranged and comprises a generous entrance hall with doors to a guest cloakroom, the dual aspect living room with double doors opening to the exceptional family room, constructed in 2020 and enjoying beautiful views with bi fold doors opening to the rear garden. Finishing the ground floor accommodation is the recently refitted kitchen/dining room arranged with a vast range of white high gloss units, integrated appliances, granite work surfaces and leading to a distinct dining area. To the first floor are four generous

double bedrooms, the master with an ensuite bathroom, a spacious landing with loft access and the family bathroom. Externally, the property sits on a particularly wide plot and is arranged with two patio seating areas, steps down to the generous lawn with walled and fenced boundaries, a shed. Side access leads to the front of the property, the large double garage and a particular feature of the property, the carriage driveway offering parking facilities for multiple vehicles. Benefiting from spacious proportions and tastefully decorated throughout, an internal viewing is highly recommended to appreciate this excellent family home.

Beechwood Park is on the outskirts of Boxmoor and close to beautiful Chilterns countryside. Hemel Hempstead offers excellent shopping, sporting and educational facilities. For commuters, the M1 and M25 are both easily accessible. The mainline station provides a fast train service in to London Euston.

Detached Executive Home

Carriage Driveway

Extended To Ground Floor

Four Double Bedrooms

Master With En Suite

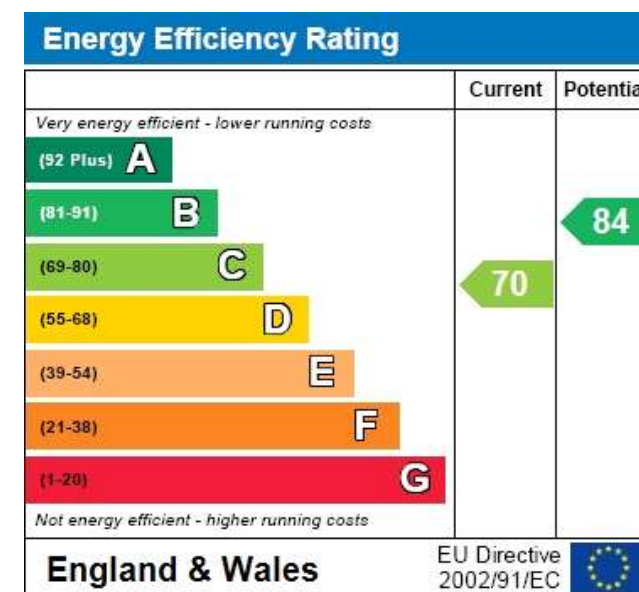
Beechwood Park Location

Hemel Hempstead Mainline Station Close At Hand

Gas Central Heating & Double Glazing

Recently Refitted Kitchen

Viewing Advised

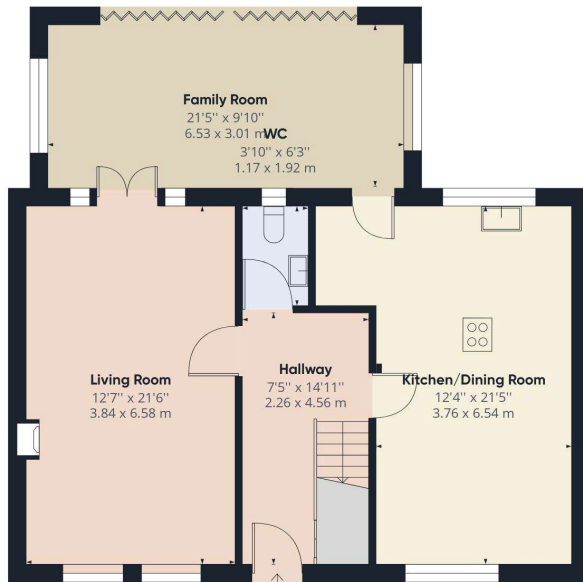


David
Doyle

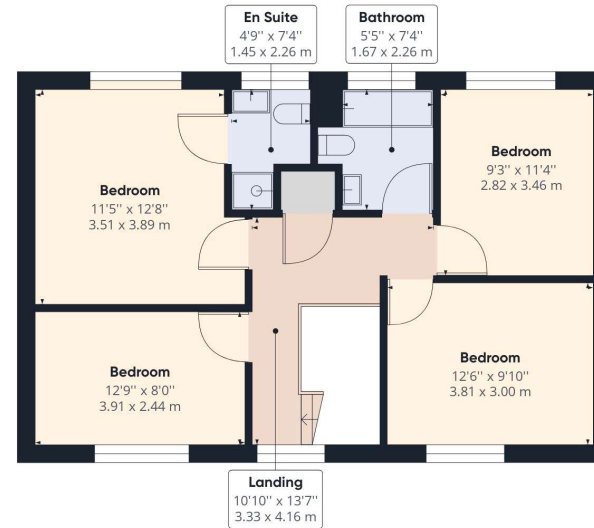
David Doyle Estate Agents (DD), for themselves and for the vendors of this property whose agents they are, give notice that: (1) These particulars and floorplans are set out as a general outline only for the guidance of the intending purchasers and do not constitute the whole, nor any part, of an offer or contract. (2) All descriptions, dimensions, floorplan dimensions, references to condition, necessary permissions for use and occupation, and any other details, are given in good faith and are believed to be correct at the date of compilation, but any intending purchasers should not rely on them as statements or representation of fact and must satisfy themselves as to their accuracy. (3) All plant, machinery, equipment, services, fixtures and fittings referred to were present at the date of first inspection, but have not been tested and we give no warranty or representation as to their condition, operation, or fitness for the intended purpose. (4) Any comment on council tax/rateable value, rates payable, and permitted planning use, is given in good faith from information informally supplied to us. Intending purchasers must seek confirmation direct from the relevant Local Authority. (5) No person employed by (DD) has any authority to enter into any contract, nor make or give any warranty or representation whatsoever in relation to this property. (6) (DD) do not hold themselves responsible, in negligence or otherwise, for any loss arising from the use of these particulars, nor for any expense incurred in viewing the premises or for abortive journeys. (7) All prices are exclusive of VAT (unless otherwise stated). Terms quoted are subject to contract. NB. PLEASE NOTE that some developments are subject to management company conditions and charges. Solicitors are to advise of any liability/ies.

 **MAYFAIR**
OFFICE.CO.UK

Call **01442 248671** to arrange a viewing or register an interest



Ground Floor Building 1



Floor 1 Building 1



Ground Floor Building 2

Approximate total area⁽¹⁾

1920.42 ft²

178.41 m²

(1) Excluding balconies and terraces

16 Beechwood Park
Felden HP3 0DY

While every attempt has been made to ensure accuracy, all measurements are approximate, not to scale. This floor plan is for illustrative purposes only.

GIRAFFE360

Boxmoor Office
45 St Johns Road
Boxmoor
Hemel Hempstead
Herts, HP1 1QQ
01442 248671