



## Price

£1,450 PCM

Fees Apply

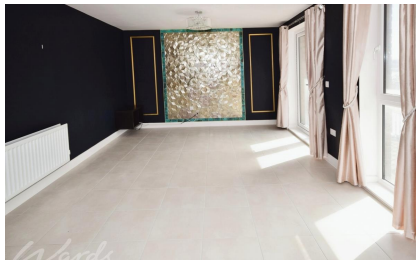


Available 30/08/24

Knights Templar Way  
Rochester ME2

*Wards*

Helping you move forwards



## Main Features

- **Two Bedroom Apartment**
- **Balcony**
- **Excellent Condition Throughout**
- **Two Allocated Parking Spaces**
- **En-suite To Master Bedroom**
- **Integrated Appliances Included**



**Deposit required is £1,673.08**  
**- Council Tax Band C**

Renting a property is a big commitment and we recommend that you visit the local authority website and these websites which offer helpful information and advice about letting

[www.gov.uk/government/publications/how-to-rent](http://www.gov.uk/government/publications/how-to-rent)

[www.gov.uk/private-renting](http://www.gov.uk/private-renting)

[www.wardsofkent.co.uk/renting/tenancy-fees-individuals/](http://www.wardsofkent.co.uk/renting/tenancy-fees-individuals/)

[www.gov.uk/green-deal-energy-saving-measures](http://www.gov.uk/green-deal-energy-saving-measures)

**Call Medway 01634 714848 ■ [wardsofkent.co.uk](http://wardsofkent.co.uk)**

IMPORTANT INFORMATION: Please contact our Lettings Team who will confirm the total costs involved in renting this property. For clarification, we wish to inform the prospective tenant that we have prepared these details as a general guide. The agent has not carried out a detailed survey nor tested the services, appliances, or specific fittings (unless otherwise stated), and no warranty can be given as to their condition. All room measurements are taken at floor level. We strongly recommend that all the information which we provide about the property is verified by yourself and your advisers. The contents of this publication are © Wards, 2015. Wards is a trading name of Arun Estates Limited Registered in England No. 2597969

## Accommodation

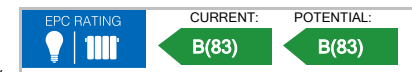
**Lounge with an open plan Kitchen** 7.59 x 3.83

**Bathroom** 2.27 x 2.04

**Bedroom 1** 3.71 x 3.91

**Ensuite** 1.40 x 2.41

**Bedroom 2** 2.91 x 3.71



# First Floor

Approx. 73.6 sq. metres (792.2 sq. feet)

