

Total area: approx. 108.8 sq. metres (1170.8 sq. feet)



26 Windermere Drive, Wellingborough, NN8 3XQ

£339,950

EXTENDED FOUR BEDROOM DETACHED!!

Offered to the market is this spacious, extended four-bedroom detached property with a block paved driveway to accommodate three cars, garage and south facing rear garden. This property also benefits from a recently refitted gas boiler, refitted kitchen-breakfast room, with a range of fitted appliances and wall/base units, a separate dining room, downstairs WC, and a low maintenance rear garden. Upstairs you will find four generous sized bedrooms, and a tastefully refitted four-piece family bathroom with bath and separate shower cubicle. The main bedroom also benefits from a built in storage cupboard and wardrobes, there is an additional storage cupboard accessed from the landing.

Externally this property offers a stunning rear garden that is low maintenance with a patio area, artificial grass and a large decking area. There is also side access from the front that leads to the garden.

This property is an absolute must see, please contact Hawksbys to arrange your viewing!



Lounge
14'0" x 11'0"

Kitchen
10'4" x 15'3"

Dining Room
12'11" x 7'4"

Garage
16'0" x 8'0"

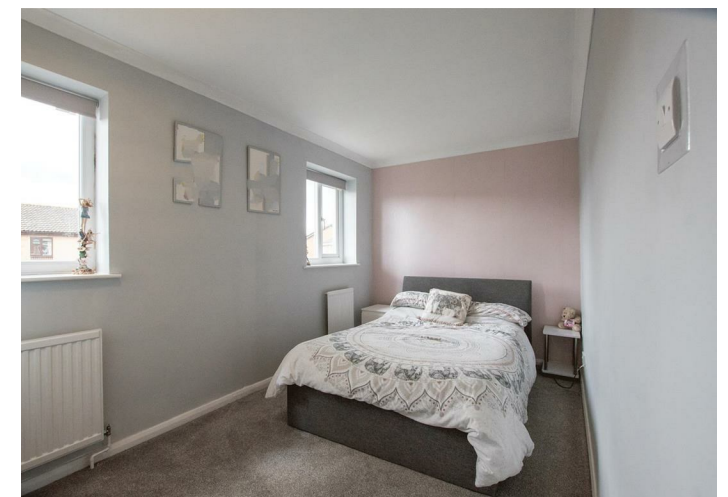
Bedroom 1
8'0" x 12'0"

Bedroom 2
15'2" x 7'7"

Bedroom 3
7'11" x 14'0"

Bedroom 4
9'9" x 7'7"

Bathroom
8'8" x 6'11"



Tenure: Freehold
Council Tax Band: B

Viewing strictly by
appointment with
Hawksbys on 01933
224444

Agents Note: Hawksbys have not tested any apparatus, equipment, fitting or services and so cannot verify they are in working order. The Buyer is advised to obtain verification from their Solicitor or Surveyor.

Internal Photographs: If photographs are included showing the interior of a property, these are to show the layout, and purchasers should check to confirm whether any appliances are included in the purchase price.

Offer Procedure: To make an offer you will need to make an appointment with our Financial Advisor to be able to process your offer in the best possible light.

Floor Plans: The plans included in these details are provided for guidance purposes only to show the general layout of the property, they are in some instances NOT to scale.

Buying a house can be complex and stressful. We try very hard to make the transaction as smooth and as trouble free as possible for buyers by guiding them through the process at every stage, including helping them with their mortgage arrangements.

YOUR HOME IS AT RISK IF YOU DO NOT KEEP UP REPAYMENTS ON A MORTGAGE OR ANY OTHER LOANS SECURED ON IT.
Life Assurance usually required.

AGENTS NOTE: THE ICON ON THE MAP REPRESENTING THE PROPERTY DOES NOT SHOW ITS EXACT POSITION IN RELATION TO THE ROAD OR CUL-DE-SAC.

Some of the photographs are taken with an extreme wide lens, as as 18mm, and in some circumstances make the rooms look larger than they are!