

Total area: approx. 1063.7 sq. feet

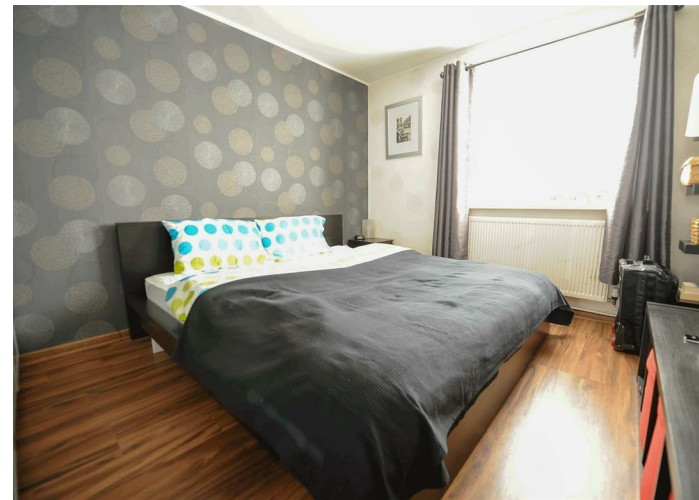


7 Rydal Mount, Wellingborough, Northamptonshire, NN8 3DZ

£199,995

STYLISH FAMILY HOME ! Presented in GREAT CONDITION THROUGHOUT is this spacious 3 bedroom terrace home situated in the Queensway area of Wellingborough. The property has been COMPLETELY MODERNISED THROUGHOUT and benefits include: STYLISH DECOR AND FLOOR COVERINGS THROUGHOUT, LARGE CONSERVATORY, LUXURY SHOWER ROOM, REFITTED KITCHEN WITH RANGE COOKER, UPVC, double glazing to windows and doors, Gas radiator central heating with combination boiler. The spacious accommodation comprises of: Entrance hall, cloakroom/WC lounge/dining area, kitchen. 3 bedrooms and shower room on the first floor. Outside to the rear is an enclosed garden offering measurable privacy and laid to lawn.

Please call Hawksbys on 01933224444 to arrange your viewing!



Tenure: Freehold  
Council Tax Band: A

Viewing strictly by  
appointment with  
Hawksbys on 01933  
724444

Agents Note: Hawksbys have not tested any apparatus, equipment, fitting or services and so cannot verify they are in working order. The Buyer is advised to obtain verification from their Solicitor or Surveyor.

Internal Photographs: If photographs are included showing the interior of a property, these are to show the layout, and purchasers should check to confirm whether any appliances are included in the purchase price.

Offer Procedure: To make an offer you will need to make an appointment with our Financial Advisor to be able to process your offer in the best possible light.

Floor Plans: The plans included in these details are provided for guidance purposes only to show the general layout of the property, they are in some instances NOT to scale.

Buying a house can be complex and stressful. We try very hard to make the transaction as smooth and as trouble free as possible for buyers by guiding them through the process at every stage, including helping them with their mortgage arrangements.

**YOUR HOME IS AT RISK IF YOU DO NOT KEEP UP REPAYMENTS ON A MORTGAGE OR ANY OTHER LOANS SECURED ON IT.**  
Life Assurance usually required.

**AGENTS NOTE: THE ICON ON THE MAP REPRESENTING THE PROPERTY DOES NOT SHOW ITS EXACT POSITION IN RELATION TO THE ROAD OR CUL-DE-SAC.**

Some of the photographs are taken with an extreme wide lens, as as 18mm, and in some circumstances make the rooms look larger than they are!

