



Guide Price £1,500,000

Oaklea Chequers Lane, Watford, WD25 0GN

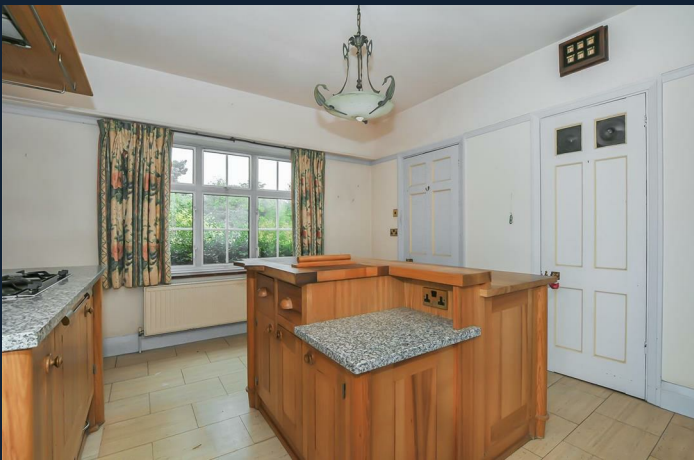


CARTER HAYWARD  
INDEPENDENT ESTATE AGENTS



- No Upper Chain
- Substantial Plot Size
- Charming Period Style Home
- Potential For Further Development
- Five Bedrooms
- Over 3,500 Sq Ft
- Spacious Living Accommodation
- Extensive Grounds
- Sought After Private Location
- Council Tax Band H





Nestled in the sought-after and private location of Chequers Lane, Watford, this impressive house offers a unique opportunity for those seeking a spacious family home. Boasting a generous 3,514 sq ft of living space, this detached period-style property features five bedrooms, making it larger than the average home in the area.

The property sits on a very impressive plot size with extensive grounds, providing ample space for outdoor activities and enjoying the picturesque views over farmland. With no upper chain, the potential for further development, and a versatile floorplan, this house offers endless possibilities for customization to suit your family's needs.

Although requiring a cosmetic update, this property presents a fantastic opportunity to create your luxury dream home. The ample off-street parking ensures convenience for you and your guests. Additionally, its close proximity to the M1 and M25 makes it an ideal choice for commuters, offering easy access to major road networks.

Don't miss out on the chance to own this charming family home with great potential in a prime location. Contact Carter Hayward today to arrange a viewing and envision the possibilities that this property holds for you and your family.









# Oaklea

Approximate Gross Internal Floor Area = 279.5 sq m / 3009 sq ft  
 Outbuilding Area = 47.0 sq m / 506 sq ft  
 Total Area = 326.5 sq m / 3514 sq ft

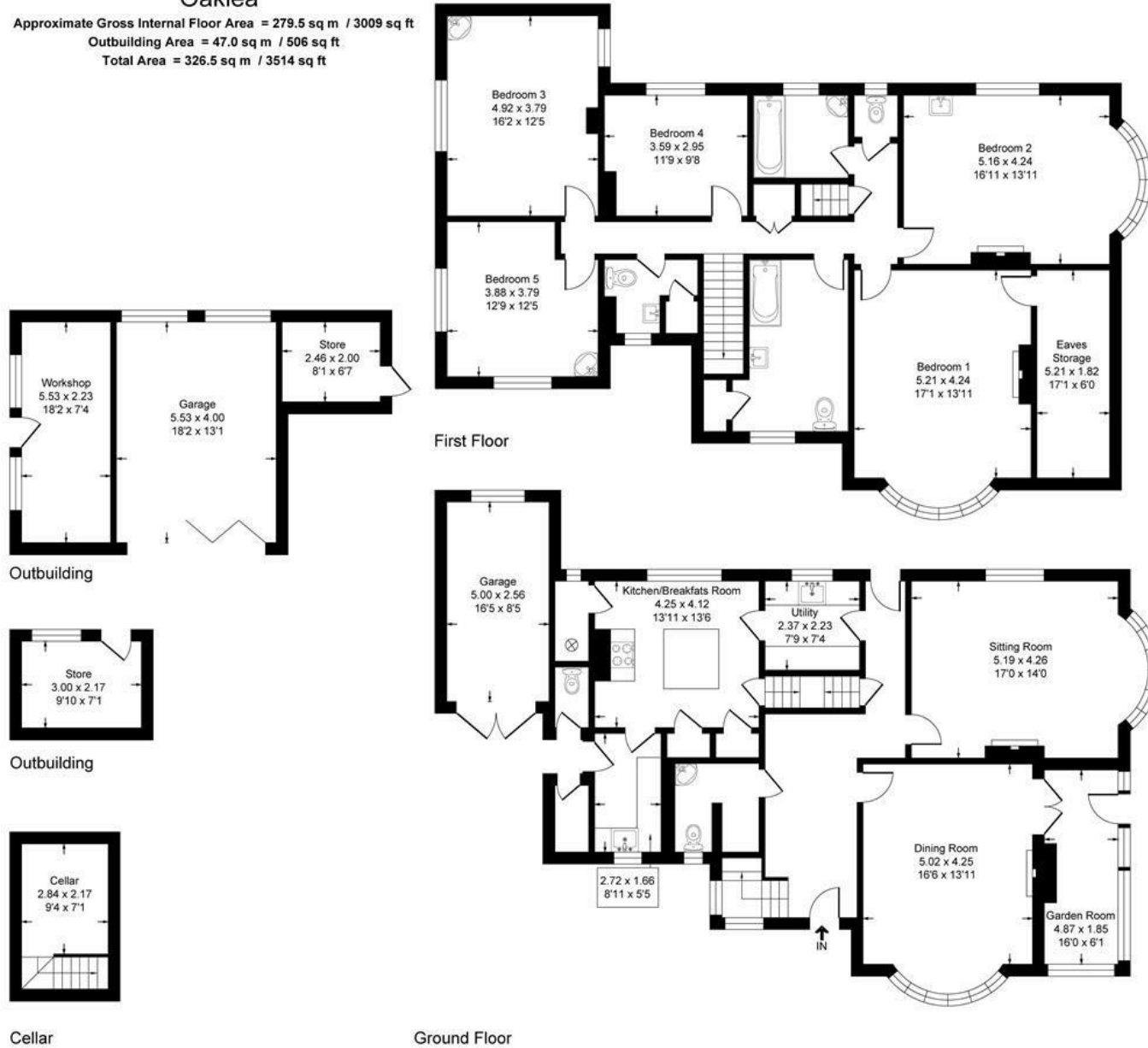
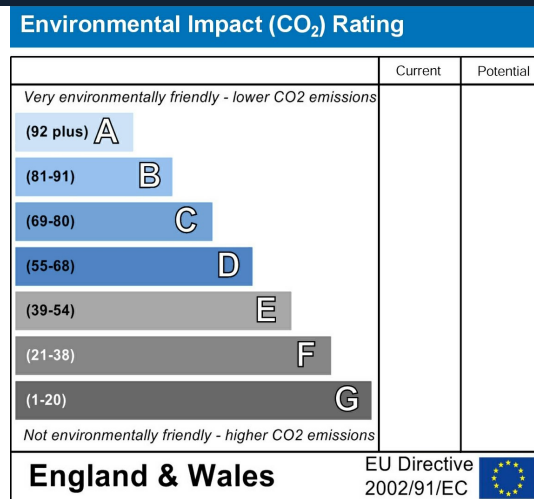
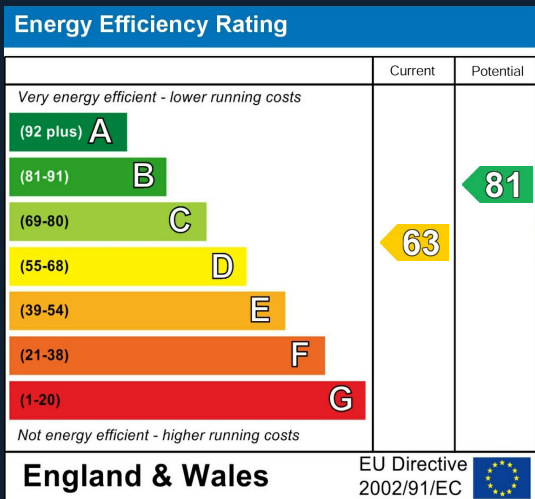
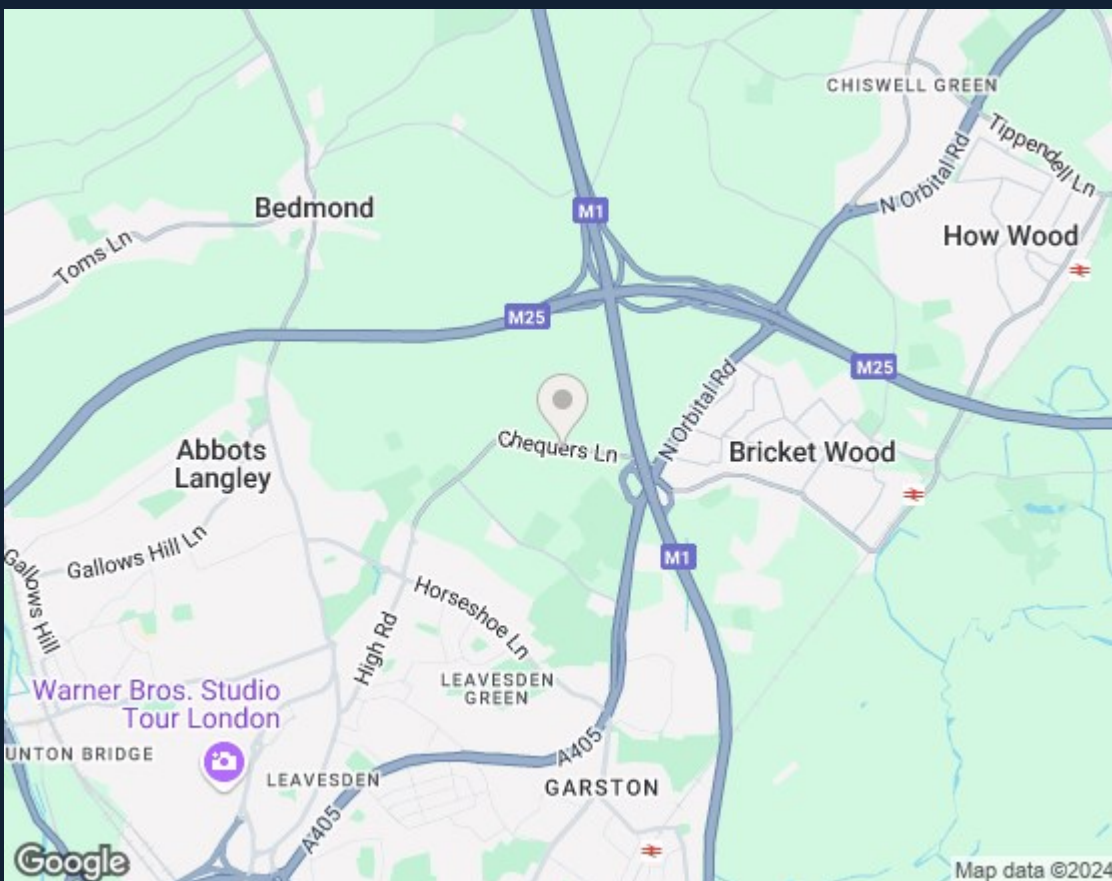


Illustration for identification purposes only, measurements are approximate, not to scale.



**CARTER HAYWARD**  
INDEPENDENT ESTATE AGENTS



119 Oakwood Road, Bricket Wood, St Albans, Hertfordshire, AL2 3QB

01923 682 888  
sales@carterhayward.co.uk

www.carterhayward.co.uk

