



6 Becketts Terrace Castle Road Saltwood Hythe CT21 4QU
Guide £545,000

colebrooksturrock.com





6 Becketts Terrace

Castle Road, Saltwood, Hythe, CT21 4QU

A very pretty four bedroom cottage in a village location close to local countryside and high performing schools.

Situation

An extremely well located cottage opposite local countryside and Saltwood Castle grounds and yet just a short level walk to village amenities including the high performing village primary school and Brockhill Park Performing Arts College which are also close by.

Commuting services are excellent if required with high speed rail links from nearby Sandling Station and Folkestone West into London St Pancras on HS1 in under an hour.

The M20 motorway provides access to the remainder of Kent and Eurotunnel in Cheriton offers connections to the Continent.

The Property

A surprisingly spacious and beautifully presented semi detached cottage enjoying a prime village location surrounded by pretty local countryside and castle grounds.

The accommodation is light and airy with generous living space and good size bedrooms.

In equal measure, Becketts Terrace combines some traditional features with the more recent improvement of a bespoke modern kitchen with a centre island designed to compliment a modern day lifestyle.

Stylishly presented and decorated in modern colours throughout, the entrance hall leads through to a generous sitting room with fireplace and built-in shelf units.

There is a cloakroom and utility area and beyond a recently fitted kitchen with "Bosch" integral appliances, a large centre island with quartz work surfaces.

This opens onto the dining and family area which is partially set beneath a vaulted roof and overlooks the rear garden with doors opening onto the patio area.

Rising to the first floor, there are four bedrooms, the master with a vaulted ceiling and a smart bathroom.

Outside

The property is approached by a lawned front garden and a pathway leading to the front door.

The west facing rear garden has a large paved terrace and is laid to lawn.

There is side access.

Services

We understand all main services are available.

Local Authority

Folkestone and Hythe District Council, Civic Centre, Castle Hill Avenue, Folkestone, Kent, CT20 2QY.



To view this property call Colebrook Sturrock on **01303 260666**

6 Becketts Terrace, Castle Road, Saltwood, Hythe

Current Council Tax Band: C

EPC Rating: C

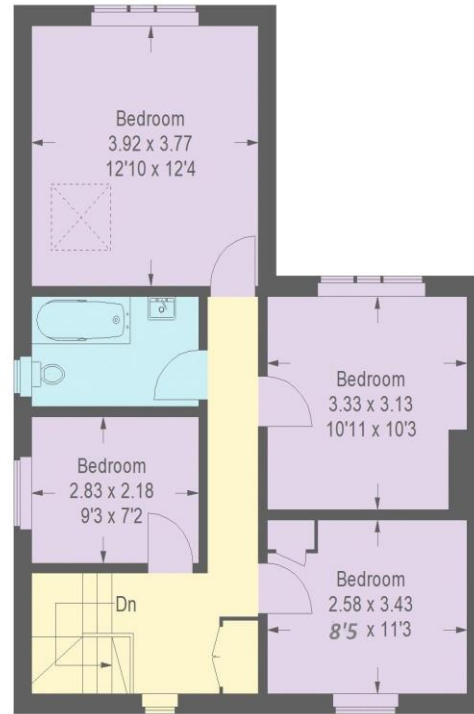
Agents Note

The property is 'bought as seen' and the Agents are unable to comment on the state and condition of any fixtures, fittings and appliances etc.

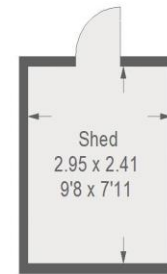


Ground Floor = 73.4 sq m / 790 sq ft

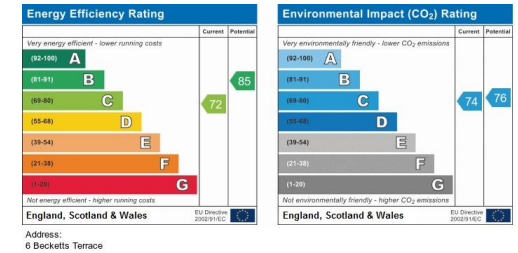
Approximate Gross Internal Area = 132.2 sq m / 1423 sq ft
 Shed = 7.1 sq m / 76 sq ft
 Total = 139.3 sq m / 1499 sq ft



First Floor = 58.8 sq m / 633 sq ft



(Not Shown In Actual Location / Orientation)

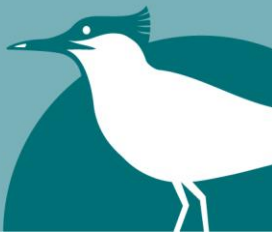


This plan is for layout guidance only. Not drawn to scale unless stated. Windows and door openings are approximate. Whilst every care is taken in the preparation of this plan, please check all dimensions, shapes and compass bearings before making any decisions reliant upon them. (ID 770881)

The Green, Saltwood, Hythe, Kent, CT21 4PS
 t: 01303 260666
 saltwood@colebrooksturrock.com



colebrooksturrock.com



IMPORTANT: we would like to inform prospective purchasers that these sales particulars have been prepared as a general guide only. A detailed survey has not been carried out, nor the services, appliances and fittings tested. Room sizes should not be relied upon for furnishing purposes and are approximate. If floor plans are included, they are for guidance only and illustration purposes only and may not be to scale. If there are any important matters likely to affect your decision to buy, please contact us before viewing the property.

C2048 Printed by Ravensworth 01670 713330

Also in: Elham • Hawkinge • Bridge • Sandwich • St. Margarets At Cliffe • Walmer • Ash