



25 Orchard Avenue, Ashford, TW15 1JB

£400,000

## 25 Orchard Avenue, Ashford, TW15 1JB

Welcome to this charming two-bedroom house nestled conveniently close to Ashford's finest schools, local amenities, and just a leisurely stroll away from the bustling town center. Boasting a meticulously maintained interior, this property offers a warm and inviting ambiance.

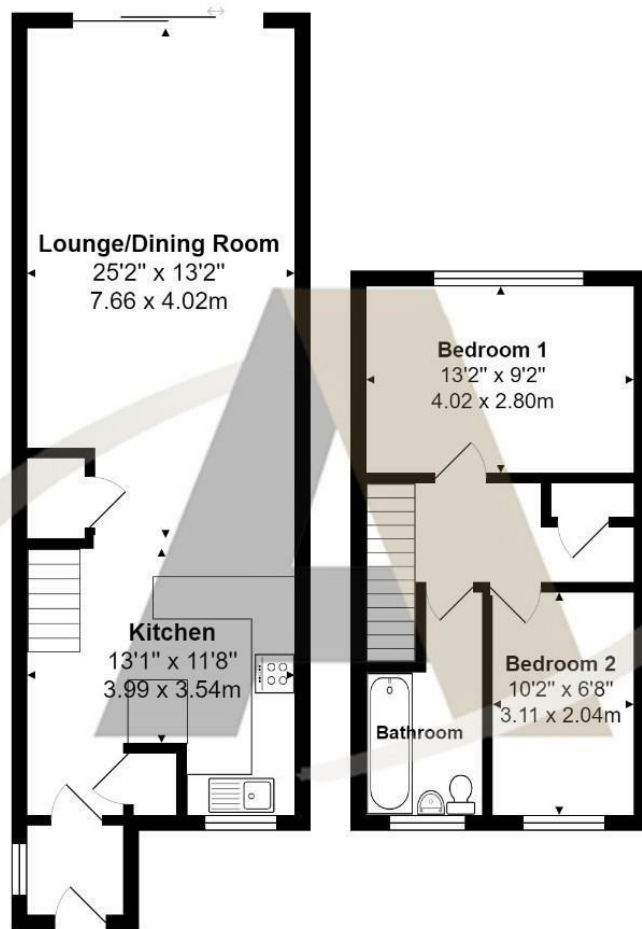
Upon entering, you are greeted by a spacious lounge, perfect for relaxing evenings or entertaining guests. The layout is thoughtfully designed to maximize space and functionality, creating an ideal setting for modern living.

The property features its own private drive, ensuring hassle-free parking, along with additional off-road parking for added convenience. Step outside into the sunny rear garden, a tranquil retreat where you can bask in the sun, dine al fresco, or simply unwind amidst nature's beauty.

Sold with no onward chain, this home presents a rare opportunity for those seeking a seamless transition into their new abode. For further details or to arrange a viewing, don't hesitate to contact Ashfords estate agent Aspen on 01784 252202. Don't miss out on the chance to make this delightful property your own!



# Floor Plan



## Features

- Two Bedrooms
- Sunny Garden
- Close To Shops
- Well Presented
- Own Drive
- Close To Schools
- Good Size Lounge
- No Onward Chain

