



15 Horsham Road, Feltham, TW14 8LN

£450,000

15 Horsham Road, Feltham, TW14 8LN

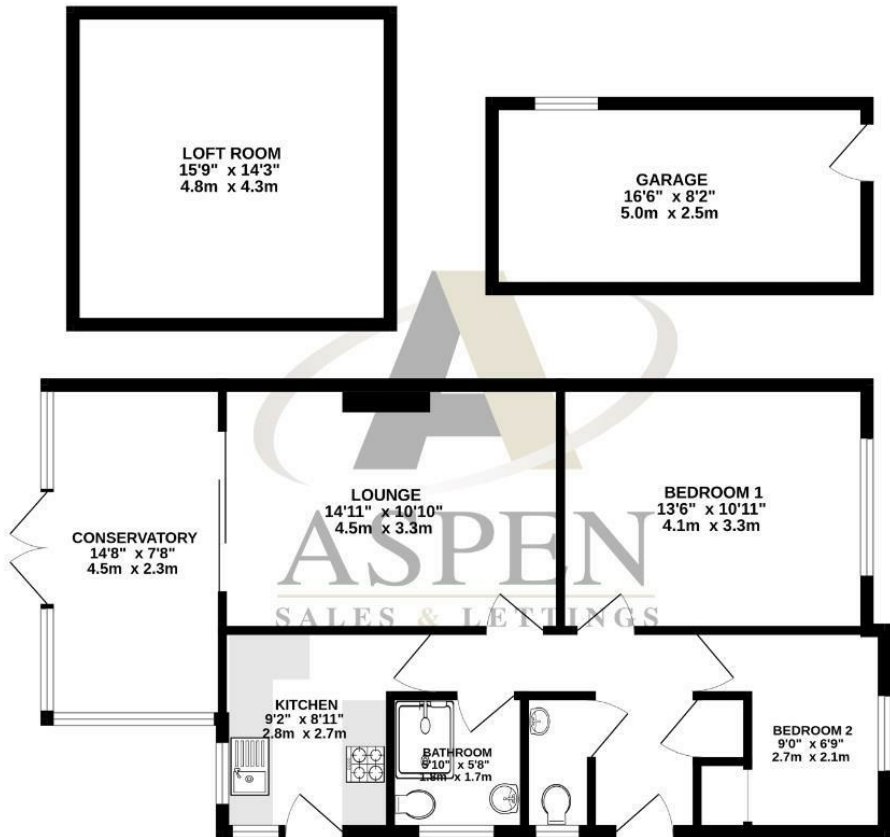
This very well-presented two-bedroom semi-detached bungalow is ideally positioned on a sought-after residential road, within comfortable walking distance of local shops, schools, and nearby parks. The property offers excellent kerb appeal and practical off-street parking, making it an attractive option for a wide range of buyers. Inside, the accommodation is bright and well maintained, complemented by a modern shower room and well-proportioned living spaces designed for comfortable, everyday living.

To the rear, the home features an easy-maintenance south facing garden, ideal for relaxing or entertaining with minimal upkeep. A detached garage has been thoughtfully converted into a versatile additional room, suitable for a variety of uses such as a gym, studio, or hobby space. Further enhancing the property is a large and highly useful loft room, currently arranged as office space; subject to the necessary planning permissions, this area offers excellent potential to be transformed into additional bedrooms and bathroom facilities, adding significant future value and flexibility. Call Alex White and his market leading sales team at Aspen estate agents.



Floor Plan

GROUND FLOOR
825 sq.ft. (76.6 sq.m.) approx.



TOTAL FLOOR AREA: 825 sq.ft. (76.6 sq.m.) approx.
Whilst every attempt has been made to ensure the accuracy of the floorplan contained here, measurements of doors, windows, rooms and any other items are approximate and no responsibility is taken for any error, omission or mis-statement. This plan is for illustrative purposes only and should be used as such by any prospective purchaser. The services, systems and appliances shown have not been tested and no guarantee as to their operability or efficiency can be given.
Made with Metropix ©2026



Features

Aspen Residential Services
77 Church Road, Ashford, Surrey, TW15 2PE
Tel: 01784 252 202
Email: enquiries@aspensalesandlettings.com



Tenure - Freehold Council Tax Band - D

