



33 Wrens Avenue, Ashford, TW15 1AP

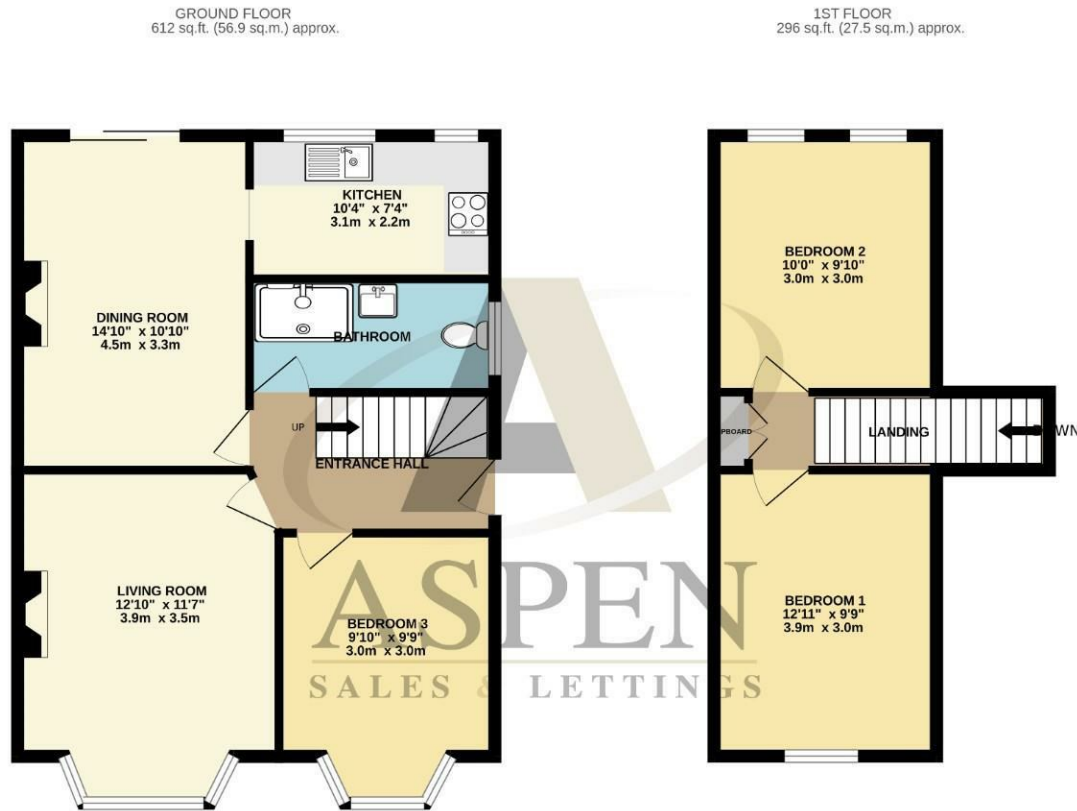
Nestled in the charming area of Wrens Avenue, Ashford, this very sensibly priced, delightful detached bungalow offers a perfect blend of comfort and convenience. With three well-proportioned bedrooms, this property is ideal for families, couples, or those seeking a peaceful retreat. Natural light floods the living areas, creating a warm and welcoming environment. The three double bedrooms are versatile, allowing for personalisation to suit your lifestyle needs, whether it be a guest room, a home office, or a children's space.

The surrounding area of Ashford is known for its friendly community and excellent amenities. Residents can enjoy easy access to local shops, schools, and parks, making it a fantastic location for families. Additionally, the transport links are superb, providing convenient connections to nearby towns and cities.

This property presents an excellent opportunity for those looking to settle in a tranquil yet accessible neighbourhood. With its appealing features and prime location, this bungalow is not to be missed. Embrace the chance to make this lovely home your own and enjoy all that Ashford has to offer.



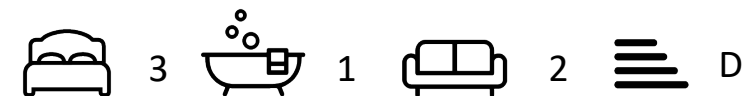
Floor Plan



Features

- Three double bedrooms
- Off street parking
- Quiet location
- Close to shops
- Two reception rooms
- Good size garden
- Close to schools
- No onward chain

Aspen Residential Services
77 Church Road, Ashford, Surrey, TW15 2PE
Tel: 01784 252 202
Email: enquiries@aspensalesandlettings.com



Tenure - Freehold Council Tax Band - D

