



5 Charles Court Feltham Road, Ashford, TW15 1AD

£275,000

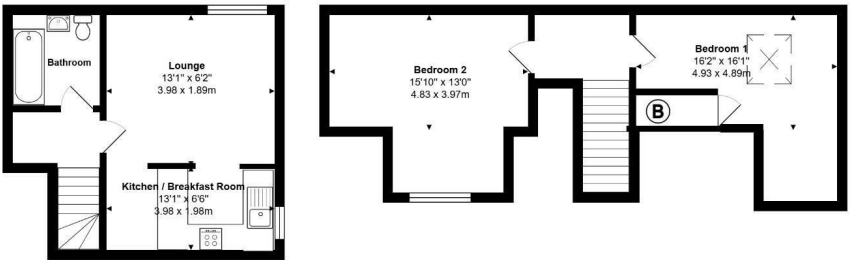
5 Charles Court Feltham Road, Ashford, TW15 1AD

This larger-than-average split-level apartment offers an excellent opportunity for buyers seeking generous living space in a prime location. Conveniently situated within walking distance of the town centre, local recreation parks, and well-connected bus routes, the property combines comfort with accessibility. Internally, the apartment boasts two spacious double bedrooms and a recently fitted modern bathroom. The layout offers a practical and airy feel, ideal for both relaxing and entertaining.

Additional benefits include allocated parking, a secure entry system, and well-maintained communal gardens that enhance the appeal of the development. With an exceptionally long 180-year lease, no ground rent, and a low monthly service charge of just £75, this property represents outstanding value. Perfect for first-time buyers, investors, or downsizers, early viewing is highly recommended to appreciate all that this sensibly priced apartment has to offer. Call Ashfords market leading estate agents at Aspen.

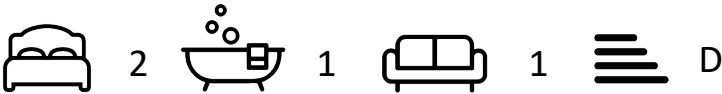


Floor Plan



Features

- Larger-than-average split-level apartment offering generous living space
- Two spacious double bedrooms providing comfortable accommodation
- Bright and practical layout ideal for both relaxing and entertaining
- Well-maintained communal gardens enhancing the overall setting
- Prime location within walking distance of the town centre, recreation parks, and bus routes
- Recently fitted modern bathroom with quality finishes
- Allocated parking space and secure entry system for peace of mind
- 180-year lease with no ground rent and a low £75 monthly service charge



Tenure - Leasehold Council Tax Band - C

