



247 Feltham Hill Road, Ashford, TW15 1LU

£970,000

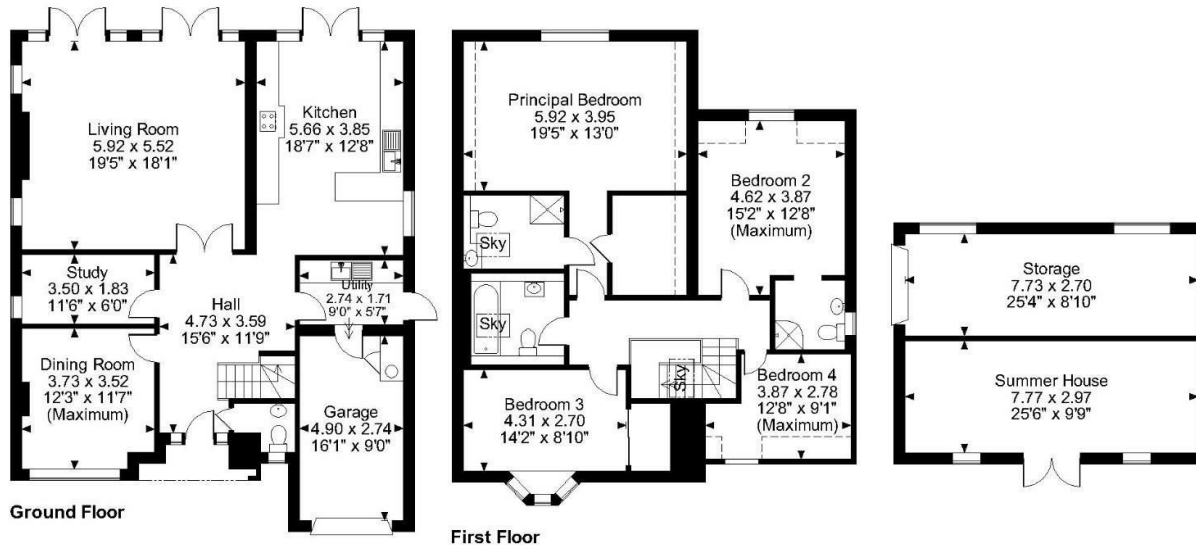
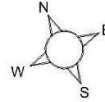
247 Feltham Hill Road, Ashford, TW15 1LU

A stunning and character four/five bedroom, three bathroom, Dutch Barn style detached family home which has been thoughtfully extended by a respected local housebuilder, with attention to detail only seen in a select few properties. This one off prestige home has the benefits of a very large front driveway, 125ft deep by 45ft wide rear garden which houses a large brick build outbuilding (with potential to convert S.T.P.P), two reception rooms, downstairs study/bedroom 5, utility room, integral garage and further potential to extend. Situated close to Ashford's best schools and local shops. The property is sold with NO ONWARD CHAIN!



Floor Plan

Feltham Hill Road, Ashford, Surrey
Approximate Gross Internal Area
Main House = 2073 Sq Ft/193 Sq M
Garage = 145 Sq Ft/13 Sq M
Outbuilding = 485 Sq Ft/45 Sq M
Total = 2703 Sq Ft/251 Sq M



FOR ILLUSTRATIVE PURPOSES ONLY - NOT TO SCALE

The position & size of doors, windows, appliances and other features are approximate only.

□ □ □ □ Denotes restricted head height

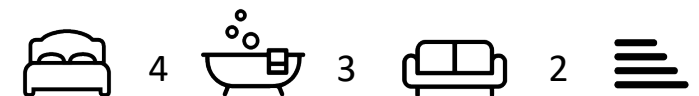
© ehouse. Unauthorised reproduction prohibited. Drawing ref. dig/8587148/NJD



Features

- Four/Five Bedrooms
- Garage
- Large Driveway
- Close to Shops
- Dutch Barn Style
- 125ft Rear Garden
- Close to Schools
- Large Outbuilding

Aspen Residential Services
 77 Church Road, Ashford, Surrey, TW15 2PE
 Tel: 01784 252 202
 Email: enquiries@aspensalesandlettings.com



Tenure - Freehold Council Tax Band - F

