



71 Kingsway, Staines-Upon-Thames, TW19 7QF

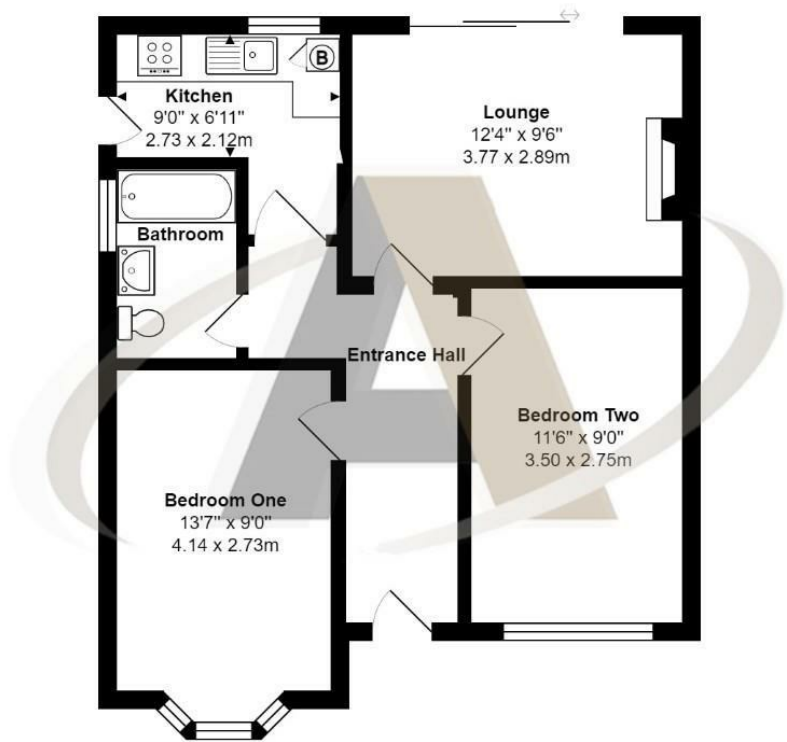
£450,000

71 Kingsway, Staines-Upon-Thames, TW19 7QF

This two bedroom semi detached bungalow has been tastefully updated throughout and offers scope to extend (stpp). Accommodation comprises of lounge and two double bedrooms. Other notable features include a re-fitted bathroom, double glazing, gas central heating, re-fitted kitchen, garage, driveway parking and large enclosed private rear garden. The property also benefits from being a short distance to a number of local amenities and has superb road links to Heathrow airport. NO ONWARD CHAIN.



Floor Plan



Kingsway, Stanwell

Total Area: 603 ft² ... 56.1 m²

All measurements are approximate and for display purposes only



Features

- Two Double Bedrooms
- Re-Fitted Bathroom
- Re-Fitted Kitchen
- Large Enclosed Rear Road
- Potential To Extend (stpp)
- Double Glazed
- Garage & Driveway
- No Onward Chain

