



33 Town Tree Road, Ashford, TW15 2PN

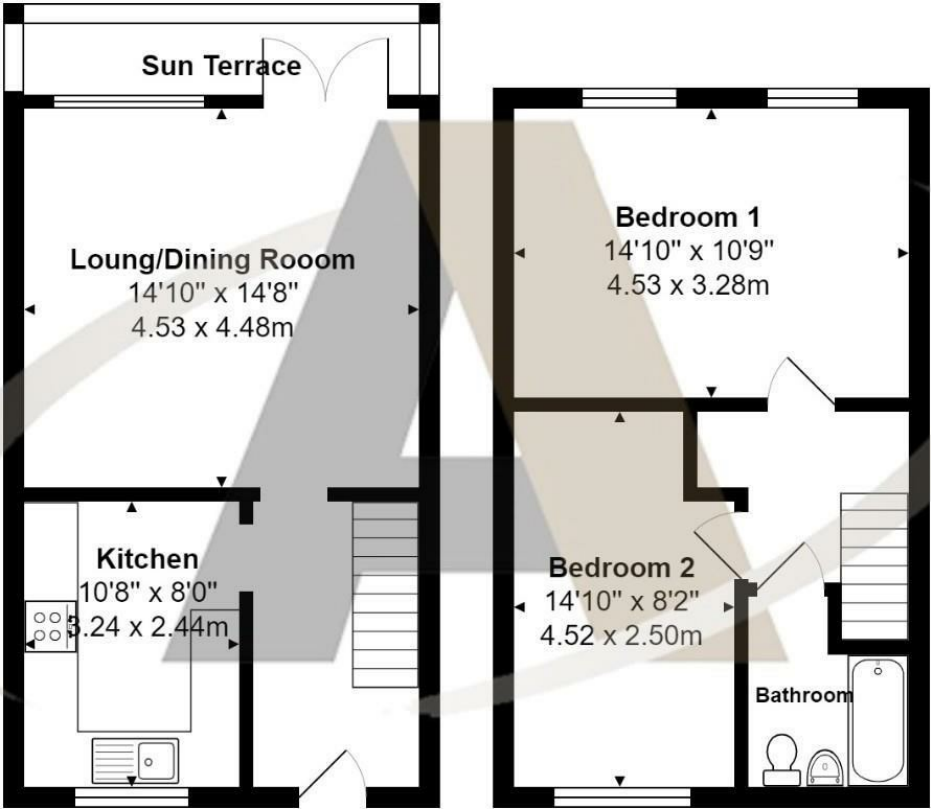
£300,000

33 Town Tree Road, Ashford, TW15 2PN

Don't miss out on this fantastic opportunity! This recently refurbished split-level maisonette is now available for sale with no onward chain. Perfectly positioned within a short stroll to the vibrant high street and convenient train station, convenience is at your doorstep. Step inside to discover spacious accommodation featuring two double bedrooms, ideal for comfort and privacy. The stylish first-floor bathroom and modern kitchen elevate the living experience. Unwind in the large lounge, enhanced by doors opening onto a sun terrace, perfect for basking in the sunlight or enjoying al fresco dining. With its desirable location and modern amenities, this property is a must-see. Book your viewing today and seize the chance to make this your new home by calling the vendors chosen sole agents on 01784 252202!



Floor Plan



Features

- Two Bedrooms
- Garden
- Town Centre Location
- Close To Shops
- Good Size Lounge
- Two Double Bedrooms
- Close To Station
- Close To Schools

