



66 Anglesey Close, Ashford, TW15 2JQ

£525,000

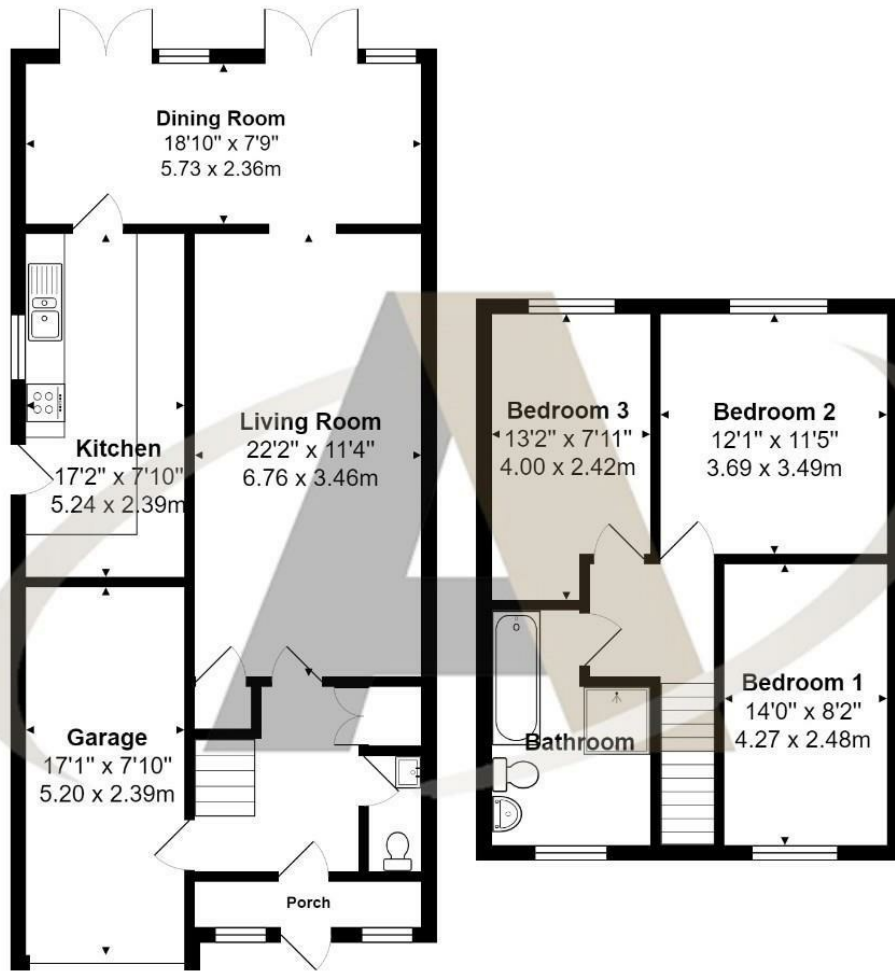
66 Anglesey Close, Ashford, TW15 2JQ

Welcome to Anglesey Close, Ashford - a charming, extended three bedroom, two reception room semi detached family home situated in one of Ashford's most sought after cul-de-sac locations and within easy reach of the best schools, town centre, station and recreation parks. The property benefits from own driveway to a double length garage, downstairs W.C., and a very large and well kept rear garden.

Other features are a very good size kitchen, large family bathroom and potential to extend further into the garage space to create more living accommodation. Priced to attract an early sale, for a viewing call the vendors number one choice of estate agents, Alex White and his experience sales team at Aspen on 01784 252202.



Floor Plan



Features

- Three good size bedrooms
- Large garden
- Close to Town
- Walking distance to best schools
- Two reception rooms
- Premier road
- Close to station
- Perfect family home

