



9 Gleneagles Close, Staines-Upon-Thames, TW19 7PD

£490,000

## 9 Gleneagles Close, Staines-Upon-Thames, TW19 7PD

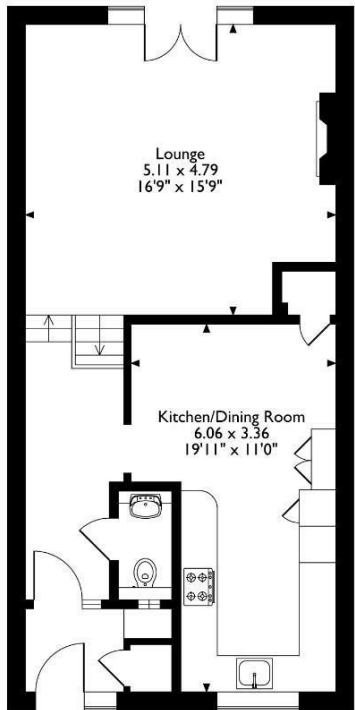
The Tardis is an immaculately presented and deceptively spacious family home that truly lives up to its name. Nestled at the end of a quiet cul-de-sac in the heart of the village, this charming property is just a short stroll from local shops and amenities. Inside, the home boasts a recently fitted, high-quality kitchen/dining room that serves as the heart of the house, perfect for family gatherings and entertaining. The large master bathroom features a separate shower as well as an additional bathroom on the top floor, providing both style and practicality, while a convenient downstairs W.C. adds to the home's functionality.

With three generously sized bedrooms, there's plenty of space for the whole family. The sunny rear garden offers a peaceful retreat for outdoor relaxation and entertaining, while the private driveway accommodates parking for two cars. This property must be seen in person to fully appreciate the surprising amount of internal space and the exceptional quality throughout. An ideal family home in a sought-after location, The Tardis is ready for its next chapter. Call the vendors number one choice of sole agents, Aspen on 01784 252202.

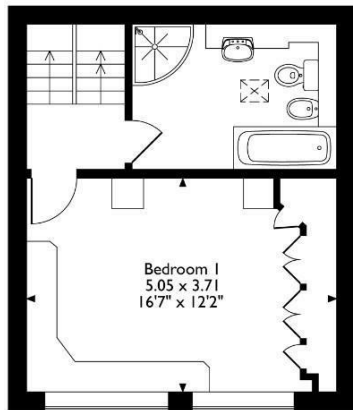


# Floor Plan

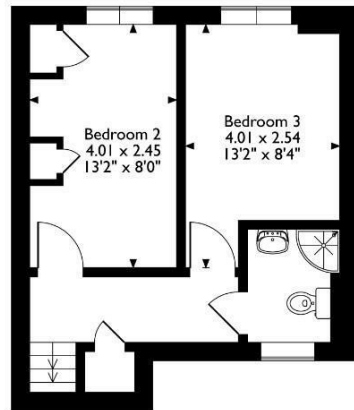
9 Gleneagles Close, Stanwell, Staines-upon-Thames, Surrey  
 Approximate Gross Internal Area  
 115 Sq M/1238 Sq Ft



**Ground Floor**



**First Floor**



**Second Floor**

Please note that the location of doors, windows and other items are approximate and this floorplan is to be used for illustrative purposes only. Unauthorized reproduction is prohibited.



## Features

Aspen Residential Services  
 77 Church Road, Ashford, Surrey, TW15 2PE  
 Tel: 01784 252 202  
 Email: enquiries@aspensalesandlettings.com

